

ARM PULL

GSH PB 110

OUTSIDE PROFILE



INSIDE PROFILE



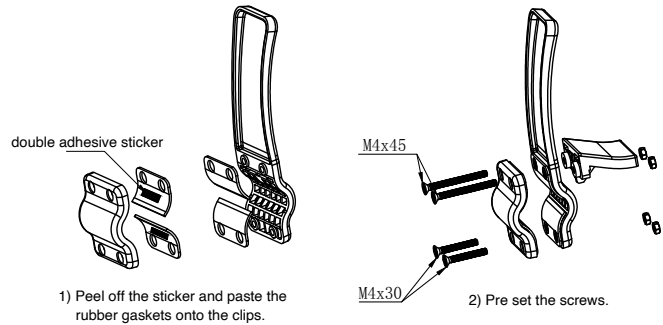
SIDE PROFILES



Arm Pull allows the opening of any door without the use of hands.

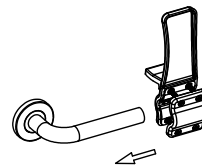
PRODUCT FEATURES

- Open door without the use of your “hands”
- Thru-bolted for maximum durability
- Includes 4 bolts for secure mounting
- Made of high grade polymer
- Specify if round (shown) or rectangular levers
- Grey
- List Price \$24.00

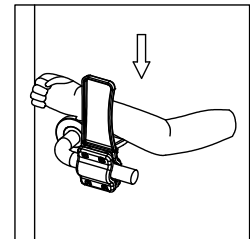


1) Peel off the sticker and paste the rubber gaskets onto the clips.

2) Pre set the screws.



3) Put through the clips from end of the handle and fasten the screws.



Put forearm on the platform and press down handle to open/close the door.

