

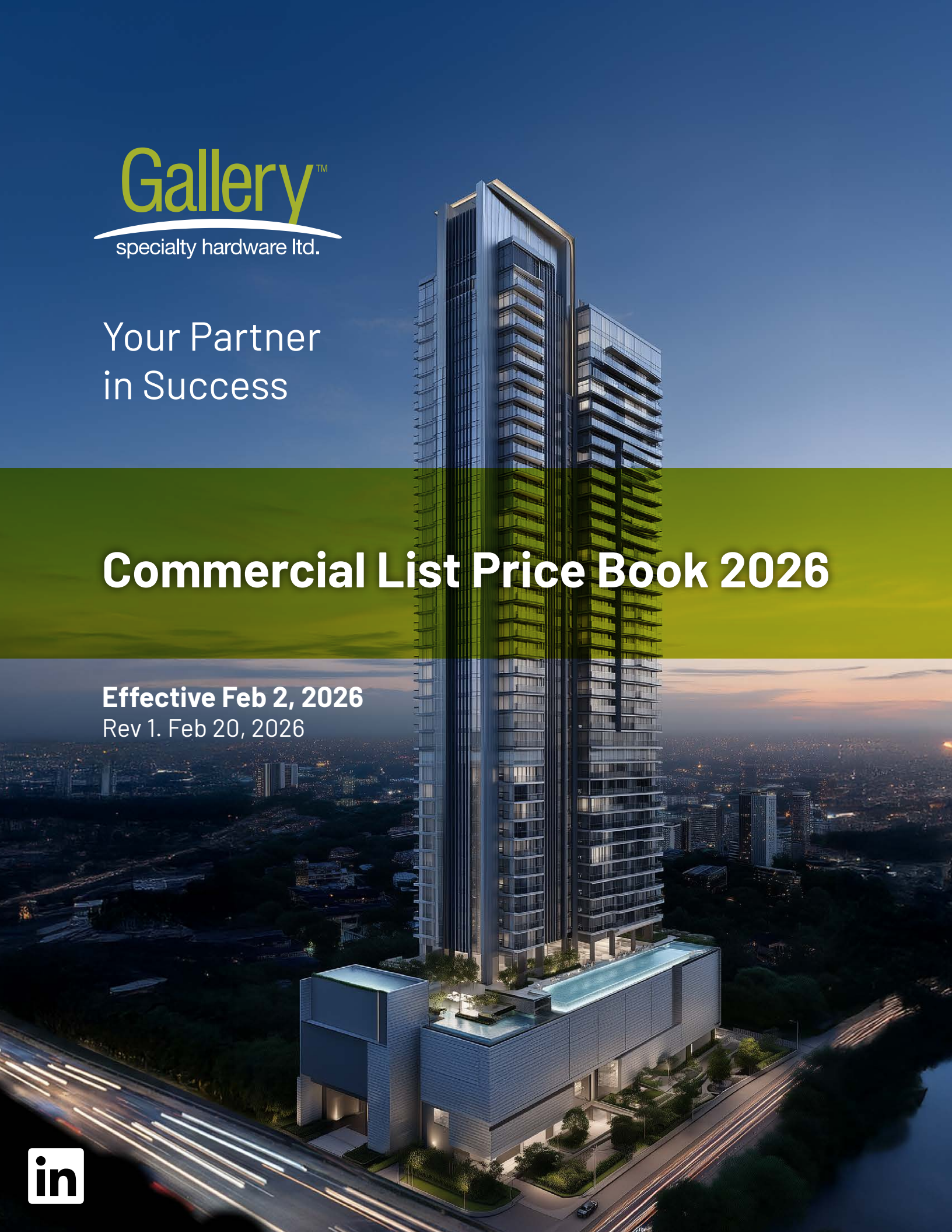


Your Partner
in Success

Commercial List Price Book 2026

Effective Feb 2, 2026

Rev 1. Feb 20, 2026



Section A - Misc. Door Hardware

Table of Contents	2-5	GSH 231	16	GSH 317 Cabinet Pull ¾" D/A. 1 ¼" Long	18
Terms and Conditions	6-13	GSH 232	16	GSH 340 Coat Hook	18
GSH 1 Ball Catch	14	GSH 240 Wall Stop	16	GSH 341 Coat Hook	18
GSH 2 Roller Catch	14	GSH 240B Wall Stop	16	GSH 342 Coat Hook	18
GSH 9 Hinge Filler Plate	14	GSH 250 Wall Stop	16	GSH 343 Coat Hook (Double)	19
GSH 11 Door Guard	14	GSH 250B Wall Stop	16	GSH 343B Coat Hook (Single)	19
GSH 14 Flush Bolt 4"	14	GSH 260 Square Wall Stop	16	GSH 344 Coat Hook	19
GSH 15 Flush Bolt 6"	14	GSH 270X Floor Stop Solid Brass	16	GSH 345 Coat Hook	19
GSH 16 Window Lift	14	GSH 270HX Floor Stop Solid Brass with Hold Open	16	GSH 401/401 UL Extension Flush Bolt	19
GSH 17 Modern Door Guard	14	GSH 272 Floor Stop Solid Brass	16	GSH 403 Adjustable Roller Latch	19
GSH 18 Window Lock	14	GSH 272H Floor Stop Solid Brass with Hold Open	16	GSH 404H Roller Latch	19
GSH 19 Flush Pull	14	GSH 273 Floor Stop Solid Brass	16	GSH 404HS Roller Latch C/W Stainless Roller	19
GSH 19SQ Flush Pull	14	GSH 273H Floor Stop Solid Brass with Hold Open	16	GSH 404SO Strike only	19
GSH 20 Sliding Door Edge Pull	14	GSH 275 Base Board Stop	16	GSH 405H Roller Latch C/W Strike	19
GSH 21 Elbow Catch	14	GSH 280A Heavy Duty Floor Stop	16	GSH 405HS Roller Latch C/W Stainless Roller	19
GSH 22 T-Strike Cut Out	14	GSH 280AH Heavy Duty Floor Stop with Hold Open	16	GSH 405SO Strike only	19
GSH 22 T-Strike Blank	14	GSH 280B Heavy Duty Floor Stop	16	GSH 406H Roller Latch C/W Strike	19
GSH 23 ANSI Blank Strike Short Lip	14	GSH 280BH Heavy Duty Floor Stop with Hold Open	16	GSH 406HS Roller Latch C/W Stainless Roller	19
GSH 23 ANSI Blank Strike	14	GSH 281 Heavy Duty Floor Stop	16	GSH 406SO Strike only	19
GSH 23 CFL ANSI Cut for Latch	14	GSH 281H Heavy Duty Floor Stop with Hold Open	16	GSH 407H Roller Latch C/W Strike	19
GSH 25/25A-1 Steel Astragal 1-½" Wide	14	GSH 282 Heavy Duty Prison Stop	16	GSH 407HS Roller Latch C/W Stainless Roller	19
GSH 25/25A-2 Steel Astragal 2" Wide	14	GSH 289A Door Holder-Solid Brass	16	GSH 407SO Strike only	19
GSH 26 Flush Bolt Blank	14	GSH 289B Door Holder-Solid Brass	16	GSH 410 / 412 Dust Proof Strike and Plate	19
GSH 27 Mortise Lock Face	14	GSH 291 3" Base Board Stop	17	GSH 413 Rabbeted Flush Bolt Adapter	19
GSH 28 Blank Latch Front	14	GSH 299 Emergency Stop	17	GSH 414/415 Squash Court/Drop Ring Pull	19
GSH 29 Blank Latch Front	14	GSH 320A Coat Hook	17	GSH 430 Decorative Floor Stop "90 Degree"	19
GSH 70 T/B Surface Bolt C/W Top and Bottom Strike	15	GSH 305B Coat Hook	17	GSH 450 Lavatory Latch	19
GSH 72 Dutch Bolt 8"	15	GSH 320B Coat Hook	17	GSH 935 Drawer Pull 3 1/2"	19
GSH 72 Dutch Bolt 12"	15	GSH 358A Coat Hook Con. MTG. C/W with Bumper	17	GSH 945 Drawer Pull 4 1/2"	20
GSH 72 Dutch Bolt 24"	15	GSH 358B Coat Hook Concealed Mounting	17	GSH 3030 Solid Brass Extruded Hinge 3" x 3"	20
GSH 73 Solid Brass 3" Strapless Surface Bolt	15	GSH 358C Coat Hook Surface Mounting	17	GSH 3535 Solid Brass Extruded Hinge 3.50" X 3.50"	20
GSH 74 Solid Brass 4" Strapless Surface Bolt	15	GSH 359 Coat Hook	17	GSH 4040 Solid Brass Extruded Hinge 4" x 4"	20
GSH 75 Solid Brass 5" Strapless Surface Bolt	15	GSH 390 Coat Hook Single Groove	17	GSH 4040 BB Solid Brass Hinge 4" x 4" Ball Bearing	20
GSH 76 Solid Brass 6" Strapless Surface Bolt	15	GSH 391 Coat Hook Single Groove	18	GSH 4540 BB Solid Brass Hinge 4.50" x 4" Ball Bearing	20
GSH 199 Door Viewer 160 Degree	15	GSH 392 Coat Hook Double Groove	18	GSH 4545 Solid Brass Extruded Hinge 4.50" x 4.50"	20
GSH 199B Door Viewer 180 Degree	15	GSH 306B Coat Hook	18	GSH 4545 BB Solid Brass Hinge 4.50" x 4.50" BB	20
GSH 200/200B/200S Low Rise Door Stop	15	GSH 307 Coat Hook (Double)	18	GSH 5050 BB Solid Brass Hinge 5" x 5" BB	20
GSH 201 ½" Riser	15	GSH 307B Coat Hook (Single)	18	Ball Tips (BF)	20
GSH 209 High & Low Rise, Spring Loaded Stop	15	GSH 308A Hat and Coat Hook Surface Mounting	18	Steeple Tips (SF)	20
GSH 210 Decorative Floor Stop "non-directional"	15	GSH 308B Hat and Coat Hook Concealed Mounting	18	Acorn Tips (AKF)	20
GSH 211 Spring Loaded Floor Stop	15	GSH 308C Hat and Coat Hook	18	Urn Tips (UF)	20
GSH 212	15	GSH 309 Coat Hook (Double)	18	Sign #102 6" x 6" Picto Woman	20
GSH 218	16	GSH 309A Coat Hook (Single)	18	Sign #103 6" x 6" Picto Man	20
GSH 218B/218S High Rise Floor Stop	16	GSH 310 Coat Hook (Double)	18	Sign #104 6" x 6" Handicap Logo	20
		GSH 310B Coat Hook (Single)	18	Sign #105 6" x 6" x Picto Man / Woman	20
		GSH 311 Hat and Coat Hook	18	Sign #106 6" x 6" x Picto Man / Woman / Handicap	20

TABLE OF CONTENTS



Sign #107 6" x 6" Picto Woman20
 Sign #108 6" x 6" Picto Man.....20
 Sign #109 6" x 6" Handicap Logo20
 Sign #110 6" x 6" x Picto Man / Woman20
 Sign #111 6" x 6" x Picto Man/Woman/Handicap20
 Sign #112 6" x 6" Picto Woman20
 Sign #113 6" x 6" Picto Man.....20
 Sign #114 6" x 6" Picto Handicap Logo.....20
 Sign #115 6" x 6" Picto Man/Woman20
 Sign #116 6" x 6" x Picto Man/Woman/Handicap20
 Engraving21
 Mounting21

Section B - Door Pulls

GSH AF-7 Straight Pull22
 GSH AF-8 Offset Pull22
 GSH AF-14 Straight Pull22
 GSH AF-15 Straight Pull22
 GSH 105 Door Pull22
 GSH 106 Door Pull22
 GSH 111 Door Pull22
 GSH 119 Door Pull22
 GSH 160 Offset Ladder Pull22
 GSH 161 Offset Ladder Pull22
 GSH 162 Straight Ladder Pull.....22
 GSH 163 Straight Ladder Pull.....22
 GSH 164 Offset Ladder Pull22
 GSH 165 Offset Ladder Pull22
 GSH 166 Straight Ladder Pull22
 GSH 167 Straight Ladder Pull22
 GSH 168 "C" Shape Pull 8 1/2" C/C22
 GSH 169 "C" Shape Pull 12" C/C.....22
 GSH 170 "C" Shape Pull 14" C/C.....22
 GSH 171 "C" Shape Pull 9" C/C.....22
 GSH 173 "C" Shape Pull 6 1/2" C/C22
 GSH 174 "C" Shape Pull 5" C/C.....22
 GSH 181 Offset Pull 12" C/C22
 GSH 900 Cast Pull 7 1/2" O/A22
 GSH 936 Hospital Pull22
 GSH 950 Flush Pull22
 GSH 955 Flush Pull22
 GSH 960 Flush Pull22
 GSH 961 Flush Pull22
 GSH 980 Cylinder Pull 1 1/4" DIA Hole22
 GSH 980B Cylinder Pull 1 1/2" DIA Hole.....22
 GSH 981 Cylinder Pull 2 1/8" DIA Hole22
 GSH 1007 7"-1009 9"-1012 12"22
 GSH 1107 7"-1109 9"-1112 12" C/W 1 1/2" X 3" BP...22
 GSH 1207 7"-1209 9"-1212 12" C/W 2" DIA BP.....23
 GSH 1207 7"-1209 9"-1212 12" C/W BP.....23
 GSH 1907 7"-1909 9"-1912 12" C/W BP.....23
 GSH 1180 - (1, 2) 12" C/C23
 GSH 1181 - (1, 2) 12" C/C C/W 2" DIA Roses.....23
 GSH 1182 - (1, 2) 12" C/C C/W Plate23
 GSH 1184 - (1, 2) 12" C/C C/W 1 1/4" Rosette23
 GSH 1185 - (1, 2) 12" C/C C/W Plate23
 GSH 4007 7"-4009 9"-4012 12" (1, 2)23
 GSH 4107 7"-4109 9"-4112 12" C/W 1-1/4 Washers23
 GSH 2200H Hospital Pull C/W Round Rose.....23

GSH 2400F Hands Free Pull23
 GSH 2500F Hands Free Pull 2500H23
 GSH 2300H Hospital Pull C/W Square Back Plate23
 GSH 2616H 4X16-2620H 4X20 Hospital Push/ Pull23
 GSH 2633 4X16 Hospital Push/ Pull23
 GSH 2632 4X16 Hospital Push/ Pull23
 GSH 4207 7"-4209 9"-4212 12" C/W 2" Washers.....24
 GSH 4307 7"-4309 9"-4312 12" C/W Narrow Plate ..24
 GSH 4607 7"-4609 9"-4612 12" C/W Plate24
 GSH 4707 -24
 GSH 4709 -24
 GSH 4712 -24
 GSH 430724
 GSH 430924
 GSH 431224
 GSH 460724
 GSH 460924
 GSH 461224
 GSH 470724
 GSH 470924
 GSH 471224
 GSH 4900 Hands Free Pull.....24
 GSH 5000 - Push Bar or Long Door Pull24
 GSH 6012 12" C/C Standard24

Section C - Grab Bars

Anchoring Devices (Non-Standard).....26
 C02-C07 Straight Grab Bar 12" X 48".....25
 C08 90 Degree "L" Shape Grab Bar 16" X 32".....25
 C09 90 Degree "L" Shape Grab Bar 16" X 32".....25
 C10 90 Degree "L" Shape Grab Bar 16" X 24".....25
 C11 90 Degree "L" Shape Grab Bar 16" X 24".....25
 C12 90 Degree "L" Shape Grab Bar 25" X 40".....25
 C12C 90 Degree "L" Shape Grab Bar C/W POST.....25
 C13 90 Degree "L" Shape Grab Bar.....25
 C14 Shower Rail 30" x 24" x 30".....25
 C15 Shower Rail 30" x 24" x 30".....25
 C16 Tub Rail 24" x 48".....25
 C17 Tub Rail 30" x 30".....25
 C18 Tub Rail 48" x 24" x 32".....25
 C19 Tub Rail 48" x 24" x 32".....25
 C19 Tub Rail 32" x 28" x 30".....25
 C21 Tub Rail 32" x 28" x 30".....25
 C22 Standing Tub Rail 34" x 14" x 32".....25
 C23 Standing Tub Rail 34" x 14" x 32".....25
 C24 Standing Tub Rail 32" x 28" x 30".....25
 C25 Standing Tub Rail 32" x 28" x 30".....25
 C26 – Horizontal Tub Rail with Outrigger.....23
 C27 Wall to Floor Rail 30" X 30".....25
 C28 Straight Rail with Support 48".....25
 C29 Straight Rail with Support 52".....25
 C30 123 Degree "L" Shape Wall Rail 12" x 12".....25
 C31 123 Degree "L" Shape Wall Rail 24" x 24".....25
 C32 Double Rail Tapered 24" x 24" x 12".....25
 C33 Side Rail with Outrigger 30" x 6" x 24".....25
 C34 Side Rail with Outrigger 30" x 6" x 24".....25
 C35A Swing Clear.....25
 C35AT Swing Clear with Toilet Paper Holder.....26
 C36 Double Rail Straight 18" x 24" x 12".....26
 C37 Floor to Ceiling 8' - 0".....26
 C38 Wall to Floor Rail C/W Outrigger 30" x 30".....26
 C39 Wall to Floor Rail C/W Outrigger 30" x 30".....26
 C40 97 Degree Wall Rail 9" x 32".....26
 C41 97 Degree Wall Rail 9" x 32".....26
 C42 Lift Up Grab Bar.....26
 BR-50 Back Rest Grab Bar 26" Exposed.....26
 BR-51 Back Rest Grab Bar 26" Concealed.....26

Section D - Flat Ware

Kickplates.....27
 GSH 30N Overlapping Type 90°.....27
 GSH 31N Overlapping Type 93°.....27
 GSH 32N Overlapping Type Radius Edge.....27
 GSH 33N Overlapping Type 90°.....27
 GSH 34N Overlapping Type 93°.....27
 GSH 35N Mortise Type 90°.....27
 GSH 36N Mortise Type 93°.....27
 GSH 37N Mortise Type Radius Edge.....27
 GSH 38N Mortise Type 90°.....27
 GSH 39N Mortise Type 93°.....27
 GSH 40N Mortise Type Radius Edge.....27
 GSH 41N Butted Type 90°.....27
 GSH 42N Butted Type 93°.....27
 GSH 43N Butted Type Radius Edge.....27
 GSH 44N Butted Type 90°.....27
 GSH 45N Butted Type 93°.....27
 GSH 46N Butted Type Radius Edge.....27
 GSH J82 Corner Guard 90°.....27
 GSH J83 Corner Guard 90°.....27
 GSH 78 Clear Plastic.....27
 GSH 80 Kick Plate.....27
 GSH 81 Push Plate.....27
 GSH 81A - PH / GSH 81A-PL.....27
 GSH 82 Push Plate.....27
 GSH 83 1/2 Round Push Plate.....27
 GSH 84 Radius Corner Push Plate.....27
 GSH 85N Decorative Push Plate 3 1/2.....27
 GSH 90F ARMOR Plates ULC Rated 20ga.....27
 GSH 47N Edge Guard 93° ULC Rated 20ga.....27
 GSH 48N Edge Guard 93° ULC Rated 20ga.....27
 GSH 50N Frame Wrap ULC Rated 20ga.....28
 Screws & Tape.....28

Section E - Guard Bars & Guide Rails

GSH 800 Guard Bar ½" X 1-½" FB C/W 1-½" X 3" BP...29
 GSH 801X Guard Bar ½" X 1-½" Flat Bar.....29
 GSH 802N Guard Bar ½" X 1-½".....29
 GSH 802X Guard Bar ½" X 1-½" Flat Bar.....29
 GSH 803N Guard Bar ½" X 1-½".....29
 GSH 804N Guard Bar ½" X 1-½".....29
 GSH 815 Guard Bar ½" X 1-½" Single Flat Bar.....29
 GSH 837 Guard Bar ½" X 1-½".....29
 GSH 837D Guard Bar.....29
 GSH FGR-601 Guide Rails.....29
 GSH FGR-602 Guide Rails.....29
 GSH FGR-603 Guide Rails.....29
 GSH FGR-604 Guide Rails.....29
 GSH FBB-651 Buggy Bumper.....29
 GSH FBB-652 Buggy Bumper.....29
 GSH FBB-653 Buggy Bumper.....29
 GSH 816 Guard Bar ½" X 1-½".....30
 GSH 821 Guard Bar ½" X 1-½".....30
 GSH 822 Guard Bar ½" X 1-½".....30
 GSH 851 Guard Bar ½" X 1-½".....30
 GSH 851D Guard Bar ½" X 1-½".....30
 GSH 852X Guard Bar ½" X 1-½" Single Bar.....30
 GSH 855 Bumper Bar ½" X 1-½".....30
 GSH 855D Guard Bar ½" X 1-½".....30
 GSH 856X Guard Bar ½" X 1-½" Single Bar.....30

TABLE OF CONTENTS



Section F - Continuous Hinges

CH931 Full Mortise	31
CH941 Full Mortise	31
CH943 Half Wrap Edge Guard	31
CH944 Half Mortise	31
CH945 Half Mortise C/W Guard	31
CH946 Swing Clear	31
CH947 Full Surface	31
CH951 Full Mortise and HD	31
CH952 Full Wrap Edge Guard/Mount and HD	31
CH952E Ext. Full Wrap Edge Guard/Mount	31
CH953 Half Wrap Edge Guard/Mount and HD	31
CH954 Half Mortise	32
CH955 Half Mortise with Guard	32
CH956 Swing Clear	32
CH957 Full Surface	32
Geared Hinges	32
Accessories	33
Double Acting Continuous Hinge	33
Key Emergency Release	33

Section H - Mortise Patch Locks

GSH 04 Storeroom Patch Lock	34
GSH 05 Office Patch Lock	34
GSH 15 Passage Patch Lock	34
GSH 37 Classroom Patch Lock	34
Electrified Strike Patch ES	34
How to Order	34

Section I - Prison Hardware

GSH 918 Butt Hinge	35
GSH 919 Butt Hinge	35
GSH 920 Surface Pull	35
GSH 921 Flush Pull	35

ACCEPTANCE

ASSA ABLOY Door Security Solutions Canada, a division of ASSA ABLOY Canada Ltd. and all of its current and future associated companies, subsidiaries and operating brands reserve the right to decline an order, in whole or in part, when the type or quantity of goods or credit worthiness of the Purchaser is not satisfactory to us in our sole and absolute discretion.

The terms and conditions contained herein constitute the entire agreement between the parties.

Purchase Orders, Quotations ("Quote") requests, Acknowledgements or the like issued by the Purchaser that have contrary standard terms and conditions are not binding on ASSA ABLOY Door Security Solutions Canada, unless such terms and conditions are approved in a separate written agreement by ASSA ABLOY Door Security Solutions Canada's authorized representatives. In the event of an acceptance of Purchaser's Purchase Order by ASSA ABLOY Door Security Solutions Canada, the Purchaser agrees that such acceptance is solely conditioned on Purchaser's acceptance of the terms and conditions set forth in this instrument, regardless of the terms and conditions specified in the Purchaser's Purchase order.

The terms and conditions in Purchaser's Purchase Order which conflict with terms and conditions of this instrument shall be disregarded and are hereby rejected, and this instrument shall constitute the entire agreement between ASSA ABLOY Door Security Solutions Canada and the Purchaser. In the event that ASSA ABLOY Door Security Solutions Canada does not enforce or require strict performance of any term or condition hereof, or of any other document, instrument or other agreement relating to goods sold, such lack of enforcement or requirement of strict performance will not waive, affect or diminish any right of ASSA ABLOY Door Security Solutions Canada to enforce or require strict performance of such term or condition in the future.

PRICES

All prices are subject to change without notice and are not guaranteed. All shipments will be made at prices in effect at the time of order acceptance. Possession of this price list does not constitute an agreement to sell. Acknowledgements, invoices and quotations are on an "Errors and Omissions Excepted" basis (commonly referred to as E.O.E.). We reserve the right to correct clerical, stenographic and other obvious errors at any time.

AGREED PAYMENTS AND TERMS

Net 30 days. A 2% discount is offered if payment is made within 10 days. Unpaid accounts going beyond 45 days from date of invoice will be subject, without notice, to cessation of shipments, except on a C.O.D. basis. Late charge of 1.50% per month on past due invoices. Credit Card payments subject to 2.4% surcharge, American Express Credit Card not accepted.

MINIMUM INVOICE

Minimum invoice is \$50.00 net product value. Any orders not totalling these minimums will be invoiced at the minimums. All orders are subject to a \$50.00 minimum charge.

ACCEPTATION

ASSA ABLOY Door Security Solutions Canada, une division d'ASSA ABLOY Canada Ltd. et toutes ses sociétés associées actuelles et futures, filiales et marques opérationnelles se réservent le droit de refuser une commande, en totalité ou en partie, quand le type ou la quantité de marchandises ou la solvabilité de l'Acheteur ne nous sont pas satisfaisants à notre seule et absolue discrétion.

Les conditions générales contenus dans les présentes constituent l'intégralité de l'accord entre les parties.

Les Bons de Commande, les Demandes de Devis ("Devis"), les Accusés de Réception ou similaires émis par l'Acheteur qui contiennent des conditions générales contraignantes ne sont pas contraignants pour ASSA ABLOY Door Security Solutions Canada, à moins que ces conditions ne soient approuvées dans un accord écrit distinct par les représentants autorisés d'ASSA ABLOY Door Security Solutions Canada. En cas d'acceptation du Bon de Commande de l'Acheteur par ASSA ABLOY Door Security Solutions Canada, l'Acheteur convient que cette acceptation est uniquement conditionnée à l'acceptation par l'Acheteur des conditions générales énoncés dans le présent instrument, indépendamment des conditions générales spécifiés dans le Bon de Commande de l'Acheteur.

Les conditions générales du Bon de Commande de l'Acheteur qui sont en conflit avec les conditions générales du présent document seront ignorées et sont par la présente rejetées, et le présent document constitue l'intégralité de l'accord entre ASSA ABLOY Door Security Solutions Canada et l'Acheteur. Dans le cas où ASSA ABLOY Door Security Solutions Canada n'appliquerait pas ou n'exigerait pas la stricte exécution de toute condition générale des présentes, ou de tout autre document, instrument ou autre accord relatif aux biens vendus, ce manque d'application ou d'exigence de stricte exécution ne renoncera, n'affectera ni ne diminuera aucun droit d'ASSA ABLOY Door Security Solutions Canada d'appliquer ou d'exiger la stricte exécution de cette condition générale à l'avenir.

PRIX

Tous les prix sont sujets à changement sans préavis et ne sont pas garantis. Toutes les expéditions seront effectuées aux prix en vigueur au moment de l'acceptation de la commande. La possession de cette liste de prix ne constitue pas un accord de vente. Les accusés de réception, les factures et les devis sont sur une base "Sauf Erreur et Omission" (communément appelé SE&O). Nous nous réservons le droit de corriger les erreurs de bureau, sténographiques et autres erreurs évidentes à tout moment.

MODALITÉS ET PAIEMENTS CONVENUS

Net 30 jours. Un rabais de 2% est offert si le paiement est effectué dans les 10 jours. Les comptes impayés allant au-delà de 45 jours à compter de la date de facturation seront soumis, sans préavis, à la cessation des expéditions, sauf sur une base P.S.L. Frais de retard de 1,50% par mois sur les factures en souffrance. Paiements par Carte de Crédit soumis à un supplément de 2,4%, la Carte de Crédit American Express n'est pas acceptée.

FACTURE MINIMUM

La facture minimale est de 50,00 \$ de valeur nette des produits. Toute commande ne totalisant pas ces minimums sera facturée aux minimums. Toutes les commandes sont soumises à des frais minimums de 50,00 \$.

GALLERY SPECIALTY HARDWARE STANDARD TERMS AND CONDITIONS OF SALE



QUOTATIONS

If ASSA ABLOY Door Security Solutions Canada elects to offer a quote, such quote will be valid until the expiration date on that quote. Complete shipment of the order must be accepted by Purchaser within standard lead times.

The QUOTE number must be referenced on the order. Any invoiced order that has the incorrect discount applied to it and did not have the QUOTE number written on the order will have a service fee of \$100.00 net DEDUCTED from any sales credit issued for the difference in discount.

The quote is null and void if the Purchase Order does not include ALL product lines listed on the Quote or if the quantities for an item covered by the Quote deviate by 10% or more. The Purchaser will have to solicit a new quotation.

With the issuance and acceptance of a QUOTE for the purchase of products, the Purchaser agrees that products so purchased will not be resold or transferred to any Distributor not authorized by ASSA ABLOY Door Security Solutions Canada to sell its products. This would be inclusive of branches of the quoted Distributor. Failure to abide by this restriction may result in the Distributor's ineligibility for Quotes, or other actions in ASSA ABLOY Door Security Solutions Canada's discretion.

ASSA ABLOY Door Security Solutions Canada and its sales representatives reserve the right, in their sole discretion and for any reason, to refuse a Distributor's request to quote a price other than ASSA ABLOY Door Security Solutions Canada's standard list price and regardless of whether ASSA ABLOY Door Security Solutions Canada or its sales representatives have previously quoted discounted prices to the Distributor on some or all of its orders.

SPECIAL ORDERS

Products not catalogued or listed in this price book will be considered as special products and will not be manufactured without prior approval from ASSA ABLOY Door Security Solutions Canada. Special products require special handling, and therefore standard lead times may not apply. Please consult with your Sales Representative for further details.

CHANGES / CANCELLATION OF ORDERS

Cancellation of orders specifying standard stock merchandise will be accepted only if made in writing and received at least one week prior to scheduled ship date. Special or custom orders for non-stock merchandise may not be cancelled after order is acknowledged.

All change requests for stock goods must be submitted in writing to Customer Service within two (2) business days of receipt of confirmation of the order. In those instances where a cancellation is accepted, ASSA ABLOY Door Security Solutions Canada reserves the right to make a reasonable cancellation charge based on expenses incurred.

DEVIS

Si ASSA ABLOY Door Security Solutions Canada choisit d'offrir un devis, ce devis sera valide jusqu'à la date d'expiration de ce devis. L'expédition complète de la commande doit être acceptée par l'Acheteur dans les délais standard.

Le numéro de DEVIS doit être référencé sur la commande. Toute commande facturée qui fait l'objet d'un rabais incorrect et dont le numéro de DEVIS n'est pas écrit sur la commande entraînera des frais de service de 100,00 \$ nets DÉDUITS de tout crédit de vente émis pour la différence du rabais.

Le devis est non avenu si le bon de commande n'inclut pas TOUTES les lignes de produits énumérées sur le devis ou si les quantités d'un article couvert par le devis dévient de 10% ou plus. L'Acheteur devra solliciter un nouveau devis.

Avec l'émission et l'acceptation d'un DEVIS pour l'achat de produits, l'Acheteur accepte que les produits ainsi achetés ne seront pas revendus ou transférés à un Distributeur non autorisé par ASSA ABLOY Door Security Solutions Canada à vendre ses produits. Cela inclurait les succursales du Distributeur dudit devis. Le non-respect de cette restriction peut entraîner l'inéligibilité du Distributeur aux Devis, ou d'autres actions à la discrétion d'ASSA ABLOY Door Security Solutions Canada.

ASSA ABLOY Door Security Solutions Canada et ses représentants commerciaux se réservent le droit, à leur seule discrétion et pour toute raison, de refuser la demande d'un Distributeur de proposer un prix autre que le prix catalogue standard d'ASSA ABLOY Door Security Solutions Canada et que ASSA ABLOY Door Security Solutions Canada ou ses représentants commerciaux aient déjà proposé des prix réduits au Distributeur sur certaines ou toutes ses commandes.

COMMANDES SPÉCIALES

Les produits non catalogués ou énumérés dans ce catalogue de prix seront considérés comme des produits spéciaux et ne seront pas fabriqués sans l'approbation préalable d'ASSA ABLOY Door Security Solutions Canada. Les produits spéciaux nécessitent une manipulation spéciale, et par conséquent, les délais d'exécution standard peuvent ne pas s'appliquer. Veuillez consulter votre Représentant des Ventes pour plus de détails.

MODIFICATIONS / ANNULATION DE COMMANDES

L'annulation des commandes spécifiant les marchandises en stock standard ne sera acceptée que si elle est faite par écrit et reçue au moins une semaine avant la date d'expédition prévue. Les commandes spéciales ou personnalisées pour des marchandises hors stock ne peuvent pas être annulées après l'accusé de réception de la commande.

Toutes les demandes de changement pour les marchandises en stock doivent être soumises par écrit au Service Client dans les deux (2) jours ouvrables suivant la réception de la confirmation de la commande. Dans les cas où une annulation est acceptée, ASSA ABLOY Door Security Solutions Canada se réserve le droit de facturer des frais d'annulation raisonnables en fonction des dépenses engagées.

DELIVERY

Orders will be acknowledged and given a scheduled delivery date based on estimated manufacturing lead times. Complete information is required to process all orders. Orders with insufficient information for processing (i.e. keying information, door sizes, etc.) may be subject to extended lead times which are relative to the time required in obtaining the necessary information for order processing. Manufacturing lead time will begin once all information is received to process an order. ASSA ABLOY Door Security Solutions Canada will use reasonable efforts to deliver products as estimated but makes no guarantee as to delivery dates.

ASSA ABLOY Door Security Solutions Canada will not be liable for back charges incurred based on availability of product or as a result of delays in delivery caused by insufficient information required to process an order.

ASSA ABLOY Door Security Solutions Canada will not be held responsible for delays in delivery caused by strikes, fires, floods or any other causes beyond our control, including the delivery of material to us. Under no circumstances shall ASSA ABLOY Door Security Solutions Canada be liable or accountable for consequential damages due to failure of delivery. Unless your order specifies otherwise, partial shipments will be made on or after the scheduled delivery date.

TERMS OF SHIPMENT

All products are shipped Free on Board (FOB) the factory or the distribution centre unless otherwise agreed to in writing from ASSA ABLOY Door Security Solutions Canada. Title to and risk of loss product shipped is the responsibility of the purchaser and delivery is deemed to be complete upon transfer of the product to a common carrier. Carriers carry limited insurance. If the customer requires additional insurance coverage, please contact our customer service department.

All claims for shortages and damage are the responsibility of the purchaser. ASSA ABLOY Door Security Solutions Canada will assist the Purchaser with documentation necessary to make a claim if requested to do so by the purchaser.

ASSA ABLOY Door Security Solutions Canada will ship via the best possible carrier. Shipments at the customer's request will be prepaid and any up-charge (actual cost less the amount negotiated by ASSA ABLOY Door Security Solutions Canada) will be added to the invoice.

The customer shall be responsible for payment of all applicable sales and / or taxes and shipping and handling costs.

Shipments are subject to a fuel surcharge of \$65.00. All acknowledged sales orders equal to or greater than \$2,000 (pretax per order unless it is consolidated) will not be charged a shipping and handling fee.

CLAIMS

In the event of ASSA ABLOY Door Security Solutions Canada or Customer error, claims for shortages, pricing errors and/ or incorrectly filled orders must be submitted in writing to Customer Service within thirty (30) days from receipt of material.

Any claims for shortages or damage by the Carrier must be made by the Customer directly to the Carrier.

Limited Carrier insurance is typically offered for all orders. If the Customer requires additional insurance, please contact an ASSA ABLOY Door Security Solutions Canada Customer Service Representative upon submittal of the order. ASSA ABLOY Door Security Solutions Canada will obtain requested insurance and the additional cost will be included on Customer's invoice.

LIVRAISON

Les commandes recevront un accusé de réception et une date de livraison planifiée en fonction des délais de fabrication estimés. Des informations complètes sont nécessaires pour traiter toutes les commandes. Les commandes avec des informations insuffisantes pour le traitement (c.-à-d. informations d'entrée, tailles de porte, etc.) peuvent être soumises à des délais d'exécution prolongés qui sont relatifs au temps nécessaire pour obtenir les informations nécessaires au traitement de la commande. Le délai de fabrication commencera une fois que toutes les informations seront reçues pour traiter une commande. ASSA ABLOY Door Security Solutions Canada déploiera des efforts raisonnables pour livrer les produits tels qu'estimés, mais ne donne aucune garantie quant aux dates de livraison.

ASSA ABLOY Door Security Solutions Canada ne sera pas responsable des frais supplémentaires encourus en raison de la disponibilité du produit ou des retards de livraison causés par des informations insuffisantes nécessaires au traitement d'une commande.

ASSA ABLOY Door Security Solutions Canada ne sera pas tenu responsable des retards de livraison causés par des grèves, incendies, inondations ou toute autre cause indépendante de notre volonté, y compris la livraison de matériel à nous. En aucun cas ASSA ABLOY Door Security Solutions Canada ne sera responsable des dommages indirects dus à un défaut de livraison. Sauf indication contraire de votre commande, les expéditions partielles seront effectuées à compter de la date de livraison prévue.

CONDITIONS D'EXPÉDITION

Tous les produits sont expédiés gratuitement à bord (FOB) de l'usine ou du centre de distribution, sauf accord contraire écrit d'ASSA ABLOY Door Security Solutions Canada. Le titre de propriété et le risque de perte du produit expédié sont la responsabilité de l'acheteur et la livraison est réputée complète lors du transfert du produit à un transporteur commun. Les transporteurs ont une assurance limitée. Si le client a besoin d'une couverture d'assurance supplémentaire, veuillez contacter notre service client.

Toutes les réclamations pour pénuries et dommages sont la responsabilité de l'acheteur. ASSA ABLOY Door Security Solutions Canada aidera l'acheteur avec la documentation nécessaire pour faire une réclamation si l'acheteur le demande.

ASSA ABLOY Door Security Solutions Canada expédiera via le meilleur transporteur possible. Les expéditions à la demande du client seront prépayées et tout supplément (coût réel moins le montant négocié par ASSA ABLOY Door Security Solutions Canada) sera ajouté à la facture.

Le client sera responsable du paiement de toutes les taxes de vente applicables et / ou des taxes ainsi que des frais d'expédition et de manutention.

Les expéditions sont soumises à un supplément de carburant de 65,00 \$. Toutes les commandes de vente reconnues égales ou supérieures à 2 000 \$ (avant taxes par commande, sauf si elles sont consolidées) ne seront pas facturées de frais d'expédition et de manutention.

RÉCLAMATIONS

En cas d'erreur d'ASSA ABLOY Door Security Solutions Canada ou du Client, les réclamations pour pénuries, erreurs de prix et/ou commandes incorrectement remplies doivent être soumises par écrit au Service Client dans les trente (30) jours suivant la réception du matériel.

Toute réclamation pour pénurie ou dommage par le Transporteur doit être faite par le Client directement au Transporteur.

L'assurance Limitée du Transporteur est généralement offerte pour toutes les commandes. Si le Client a besoin d'une assurance supplémentaire, veuillez contacter un Représentant du Service Client d'ASSA ABLOY Door Security Solutions Canada dès la soumission de la commande. ASSA ABLOY Door Security Solutions Canada obtiendra l'assurance demandée et le coût supplémentaire sera inclus sur la facture du Client.

GALLERY SPECIALTY HARDWARE STANDARD TERMS AND CONDITIONS OF SALE



INVOICE DEDUCTION

An ASSA ABLOY Door Security Solutions Canada Sales Representative or Customer Service Representative must be notified of any disputed invoices within thirty (30) days from the date of invoice. Deductions should only be taken for the disputed amount and the balance of the invoice is due and payable within standard payment terms.

RETURN GOODS

No Material is to be returned to our facilities without prior written approval from customer service. It is the policy of ASSA ABLOY Door Security Solutions Canada to not accept returns of any materials that are correctly furnished as per the Distributor's Purchase Order. All such product must be returned in its original unmarked carton. The goods must have been shipped and invoiced in the previous sixty (60) days. Returns will be at the distributor's expense. The goods returned will be subject to inspection and a minimum 20% restocking fee will be applied to compensate for the cost of inspection, repacking and handling.

Return of product due to customer order error or accommodation must be prearranged with ASSA ABLOY Door Security Solutions Canada and approved in writing by Sales Management. A minimal restocking fee of 50% will be charged. RGA procedure should be followed and will be completed upon receipt and verification by ASSA ABLOY Door Security Solutions Canada that the returned merchandise is in saleable condition and that the material can be returned to the original manufacturer.

Defective goods that are out of warranty period will not be accepted for return. Products that are master-keyed, special orders, key bitted will not be accepted under any circumstances, unless the product is determined to be defective.

TAXES

Prices do not include any present or future Federal, Province, or Local property, license, privilege, sales, use, excise, gross receipts or other like taxes or assessments, which may result from transactions, or any services performed in connection herewith.

GOVERNING LAW

The rights and obligations of the parties shall be governed by the laws of the Province of Ontario, excluding any conflicts of law provisions. The United Nations Convention on Contracts for the International Sale of Goods shall not apply to this Agreement.

INDEMNITY

Purchaser shall indemnify ASSA ABLOY Door Security Solutions Canada and hold ASSA ABLOY Door Security Solutions Canada harmless against all claims, liability, loss or other damages (including costs, legal or otherwise incurred by ASSA ABLOY Door Security Solutions Canada) to all persons for injury of any nature, including sickness and/ or death, property damage at the time of delivery or after when the product is no longer in ASSA ABLOY Door Security Solutions Canada possession or control.

DÉDUCTION DES FACTURES

Un Représentant des Ventes ou un Représentant du Service Client d'ASSA ABLOY Door Security Solutions Canada doit être informé de toute facture contestée dans les trente (30) jours suivant la date de la facture. Les déductions ne doivent être prises que pour le montant contesté et le solde de la facture est dû et payable selon les conditions de paiement standard.

RETOUR DES MARCHANDISES

Aucun Matériel ne doit être retourné à nos installations sans l'approbation écrite préalable du service client. ASSA ABLOY Door Security Solutions Canada a pour politique de ne pas accepter les retours de matériaux correctement fournis conformément au Bon de Commande du Distributeur. Tous ces produits doivent être retournés dans leur carton d'origine non marqué. Les marchandises doivent avoir été expédiées et facturées dans les soixante (60) jours précédents. Les retours seront à la charge du distributeur. Les marchandises retournées seront soumises à une inspection et des frais de restockage minimum de 20% seront appliqués pour compenser les coûts d'inspection, de réemballage et de manutention.

Tout retour de produit dû à une erreur de commande du client ou à un besoin d'accommodement doit être préalablement convenu avec ASSA ABLOY Door Security Solutions Canada et approuvé par écrit par la Direction des Ventes. Des frais de restockage minimaux de 50% seront facturés. La procédure ARM doit être suivie et sera complétée dès réception et vérification par ASSA ABLOY Door Security Solutions Canada que la marchandise retournée est en état de vente et que le matériel peut être retourné au fabricant d'origine.

Les marchandises défectueuses hors période de garantie ne seront pas acceptées pour le retour. Les produits à clé maîtresse, les commandes spéciales et les produits à clés taillées ne seront acceptés en aucun cas, sauf si le produit est jugé défectueux.

TAXES

Les prix n'incluent pas les taxes ou cotisations fédérales, provinciales ou locales actuelles ou futures, qu'elles soient foncières, de licence, de privilège, de vente, d'utilisation, d'accise, sur les recettes brutes ou autres, qui pourraient résulter de transactions ou de services rendus en lien avec les présentes.

LOIS APPLICABLES

Les droits et obligations des parties sont régis par les lois de la province de l'Ontario, à l'exclusion de toute disposition relative aux conflits de lois. La Convention des Nations Unies sur les Contrats de Vente Internationale de Biens ne s'applique pas au présent Accord.

INDEMNITÉ

L'acheteur indemniserà ASSA ABLOY Door Security Solutions Canada et tiendra ASSA ABLOY Door Security Solutions Canada à l'abri de toutes réclamations, responsabilités, pertes ou autres dommages (y compris les coûts, juridiques ou autres, encourus par ASSA ABLOY Door Security Solutions Canada) à toutes les personnes pour des blessures de toute nature, y compris la maladie et/ou le décès, les dommages matériels au moment de la livraison ou après, quand le produit n'est plus en possession ou sous le contrôle d'ASSA ABLOY Door Security Solutions Canada.

FORCE MAJEUR

ASSA ABLOY Door Security Solutions Canada shall not be liable for its failure to perform due to any contingencies beyond its control, including but not limited to acts of God, fires floods, wars, sabotage, accidents, labour disputes, shortages, government laws, ordinances, rules and regulations. ASSA ABLOY Door Security Solutions Canada shall not be liable for its failure to deliver due to its inability to obtain materials, equipment failure, labour actions, transportation issues or any similar contingencies.

In the event of delays due to the aforementioned contingencies, the date of delivery will be postponed by such length of time as the circumstances dictate.

COPYRIGHTS AND PATENTS

All products in ASSA ABLOY Door Security Solutions Canada catalogues, brochures and price lists are either patented, Copyrighted, or registered by ASSA ABLOY Door Security Solutions Canada.

BACK CHARGES

ASSA ABLOY Door Security Solutions Canada is not responsible for, does not authorize, and will not accept charges for the cost of labour, or material incurred by anyone for installation, repair, service, or replacement of any product of unless specifically authorized by a Senior officer of the company.

GUARANTEE

We guarantee our products against fault in workmanship and material. Claims for defects must be made immediately upon receipt of goods. Products sold with lacquered finish (C3, C4, C5, C9, C10, C19 and C20) are not guaranteed against scratching or chipping, after installation on job site. The materials we use for lacquered finishes are the best available, however, we cannot guarantee against deterioration due to wear or environmental. US10B is a living finish and will patina over time. Limited warranty on all Powder Coated materials.

LIMITED WARRANTY

ASSA ABLOY Door Security Solutions Canada warrants that its products sold under the Gallery Specialty Hardware trade name in North America are free from defects in workmanship and materials under normal use and service for a period of 1 year.

This warranty does not cover defects or damage arising from improper installation, lack of or improper maintenance, improper storage, shipping and handling, corrosion, erosion, ordinary wear and tear, misuse, abuse, accident, unauthorized service, or use with unauthorized non-Gallery Specialty Hardware products or parts.

This warranty is void if any modification is made to the warranted product, regardless of whether the modification causes or contributes to the alleged defect. All modifications are made fully at the risk of the party making the modification.

The only liability of Gallery Specialty Hardware in tort or contract whether under this warranty or otherwise, shall be limited to the repair or replacement of any product or component part which shall prove defective as covered by this warranty, within the stated time Period stated Above, after delivery to the original purchaser.

FORCE MAJEURE

ASSA ABLOY Door Security Solutions Canada ne sera pas responsable de son incapacité à exécuter ses obligations en raison de circonstances indépendantes de sa volonté, y compris, mais sans s'y limiter, les cas de force majeure, les incendies, les inondations, les guerres, le sabotage, les accidents, les conflits du travail, les pénuries, les lois, ordonnances, règles et règlements gouvernementaux. ASSA ABLOY Door Security Solutions Canada ne sera pas responsable de son incapacité à livrer en raison de son incapacité à obtenir des matériaux, de la défaillance de l'équipement, des actions de travail, des problèmes de transport ou de toute contingence similaire.

En cas de retards dus aux contingences susmentionnées, la date de livraison sera reportée d'une durée que les circonstances dicteront.

DROITS D'AUTEUR ET BREVETS

Tous les produits dans les catalogues, brochures et listes de prix d'ASSA ABLOY Door Security Solutions Canada sont soit brevetés, protégés par le droit d'auteur, ou enregistrés par ASSA ABLOY Door Security Solutions Canada.

FRAIS SUPPLÉMENTAIRES

ASSA ABLOY Door Security Solutions Canada n'est pas responsable, n'autorise pas et n'acceptera pas les frais de main-d'œuvre ou de matériel encourus par quiconque pour l'installation, la réparation, le service ou le remplacement de tout produit, sauf autorisation spécifique d'un cadre Supérieur de la société.

GARANTIE

Nous garantissons nos produits contre les défauts de fabrication et de matériaux. Les réclamations pour défauts doivent être faites immédiatement à la réception des marchandises. Les produits vendus avec un fini laqué (C3, C4, C5, C9, C10, C19 et C20) ne sont pas garantis contre les rayures ou l'écaillage, après l'installation sur le chantier. Les matériaux que nous utilisons pour les finitions laquées sont les meilleurs disponibles, cependant, nous ne pouvons pas garantir contre la détérioration due à l'usure ou à l'environnement. US10B est une finition vivante et patinera au fil du temps. Garantie limitée sur tous les matériaux à Revêtement en Poudre.

GARANTIE LIMITÉE

ASSA ABLOY Door Security Solutions Canada garantit que ses produits vendus sous le nom commercial Gallery Specialty Hardware en Amérique du Nord sont exempts de défauts de fabrication et de matériaux dans des conditions normales d'utilisation et de service pendant une période de 1 an.

Cette garantie ne couvre pas les défauts ou dommages résultant d'une installation incorrecte, d'un manque ou d'un entretien inadéquat, d'un stockage inapproprié, de l'expédition et de la manutention, de la corrosion, de l'érosion, de l'usure normale, d'une mauvaise utilisation, d'un abus, d'un accident, d'un service non autorisé, ou de l'utilisation avec des produits ou pièces non autorisés de Gallery Specialty Hardware.

Cette garantie est nulle si une quelconque modification est apportée au produit garanti, que cette modification cause ou contribue ou non au défaut allégué. Toutes les modifications sont effectuées entièrement aux risques et périls de la partie qui effectue la modification.

La seule responsabilité de Gallery Specialty Hardware en matière délictuelle ou contractuelle, que ce soit en vertu de cette garantie ou autrement, sera limitée à la réparation ou au remplacement de tout produit ou pièce constitutive qui se révélera défectueux tel que couvert par cette garantie, dans le délai indiqué ci-dessus, après la livraison à l'acheteur d'origine.

EXPORT CONTROL AND SANCTIONS

1.1 The Customer represents and warrants to ASSA ABLOY Door Security Solutions Canada that it will always act in compliance with Economic Sanctions and Export Control Laws, and that:

a) neither the Customer, its affiliates, or any of their respective directors, officers, employees nor, so far as the Customer is aware, any agents or other persons acting on behalf of any of the foregoing:

I. is, or has been, a Listed Person;

II. has engaged in any business dealings or activities that would reasonably be expected to result in it becoming a Listed Person;

III. directly or indirectly, has conducted or is conducting any business dealings or activities with or for the benefit of, or is otherwise involved in any business with a Listed Person, or otherwise acting in violation of Economic Sanctions and Export Control Laws;

IV. has engaged or is engaging in any transaction that circumvents, evades or avoids, or has the purpose or effect of circumventing, evading or avoiding, or attempts to violate, any Economic Sanctions and Export Control Laws; or

V. is, or has been, in violation of, or subject to, any investigation or enquiry by, or on behalf of, any governmental or other regulatory body relating to Economic Sanctions and Export Control Laws.

b) the Customer shall act in compliance with Economic Sanctions and Export Control Laws, and shall not sell nor re-export the Product without all requisite licenses and approvals under Economic Sanctions and Export Control Laws;

c) the Customer shall not sell, export or re-export, the Product, directly or indirectly, to the Russian Federation or Belarus or for use in the Russian Federation or Belarus (whether or not permitted under Economic Sanctions and Export Control Laws applicable to the Customer);

d) the Customer shall undertake its best efforts to ensure that the purpose of this Clause is not frustrated by any third parties further down the commercial chain, including by possible resellers;

e) the Customer agrees to (i) cascade the contractual obligations set forth in this Section 1.1. in contracts with third parties, including possible resellers, further down the commercial chain.; and (ii) set up and maintain an adequate monitoring mechanism to detect conduct by any third parties further down the commercial chain, including by possible resellers, that would frustrate the purpose of this Section 1.1;

f) the representations and warranties set forth in this Section 1.1 above shall always remain true and correct;

g) the Customer will provide written notice to ASSA ABLOY Door Security Solutions Canada as promptly as possible and in any event within five business days, if (i) any representation or warranty should cease to be true at any time., or (ii) the Customer should encounter any problems in applying paragraphs b)- e) in this Section 1.1 above, including any relevant activities by third parties that could frustrate the purpose of said paragraphs b)- e); and

h) the Customer will not engage in any transaction for Military End-Use unless explicitly approved in writing by ASSA ABLOY Door Security Solutions Canada.

CONTRÔLE DES EXPORTATIONS ET SANCTIONS

1.1 Le Client déclare et garantit à ASSA ABLOY Door Security Solutions Canada qu'il agira toujours en conformité avec les Sanctions Économiques et les Lois sur le Contrôle des Exportations, et que :

a) ni le Client, ses affiliés, ni aucun de leurs administrateurs, dirigeants, employés respectifs, ni, à la connaissance du Client, aucun agent ou autre personne agissant au nom de l'un des éléments susmentionnés :

I. est, ou a été, une Personne Inscrite;

II. s'est engagé dans des transactions ou des activités commerciales qui devraient raisonnablement lui permettre de devenir une Personne Inscrite;

III. directement ou indirectement, a mené ou mène des relations ou des activités commerciales avec ou pour le bénéfice de, ou est autrement impliqué dans toute entreprise avec une Personne Inscrite, ou agit autrement en violation des Sanctions Économiques et des Lois sur le Contrôle des Exportations;

IV. s'est engagé ou s'engage dans toute transaction qui contourne, élude ou évite, ou a pour but ou effet de contourner, éluder ou éviter, ou tente de violer, toute Sanction Économique et Loi sur le Contrôle des Exportations; ou

V. est, ou a été, en violation de, ou soumis à, toute enquête ou investigation par, ou au nom de, tout organisme gouvernemental ou autre organisme de réglementation relatif aux sanctions économiques et aux lois sur le contrôle des exportations.

b) le Client doit agir en conformité avec les Sanctions Économiques et les Lois sur le Contrôle des Exportations, et ne doit pas vendre ni réexporter le Produit sans toutes les licences et approbations requises en vertu des Sanctions Économiques et des Lois sur le Contrôle des Exportations;

c) le Client ne doit pas vendre, exporter ou réexporter le Produit, directement ou indirectement, vers la Fédération de Russie ou la Biélorussie ou pour une utilisation dans la Fédération de Russie ou la Biélorussie (qu'il soit ou non autorisé en vertu des Sanctions Économiques et des Lois sur le Contrôle des Exportations applicables au Client);

d) le Client doit faire de son mieux pour s'assurer que l'objet de la présente Clause n'est pas frustré par des tiers plus loin dans la chaîne commerciale, y compris par d'éventuels revendeurs;

e) le Client accepte de (i) cascader les obligations contractuelles énoncées dans la présente Section 1.1. dans des contrats avec des tiers, y compris d'éventuels revendeurs, plus bas dans la chaîne commerciale; et (ii) mettre en place et maintenir un mécanisme de surveillance adéquat pour détecter les comportements de tiers plus bas dans la chaîne commerciale, y compris d'éventuels revendeurs, qui iraient à l'encontre de l'objectif de la présente Section 1.1;

f) les déclarations et garanties énoncées dans la présente Section 1.1 ci-dessus resteront toujours vraies et correctes;

g) le Client fournira un avis écrit à ASSA ABLOY Door Security Solutions Canada aussi rapidement que possible et, dans tous les cas, dans les cinq jours ouvrables, si (i) toute déclaration ou garantie cesse d'être vraie à tout moment, ou (ii) le Client devrait rencontrer des problèmes dans l'application des paragraphes b)- e) de la présente Section 1.1 ci-dessus, y compris toute activité pertinente de tiers qui pourrait contrecarrer l'objectif desdits paragraphes b)- e); et

h) le Client ne s'engagera dans aucune transaction pour une Utilisation Finale Militaire à moins d'être explicitement approuvé par écrit par ASSA ABLOY Door Security Solutions Canada.

i) The Customer will provide all information relating to requests for Products that the Customer suspects could violate or circumvent Economic Sanctions and Export Control Laws, including requests from or on behalf of a Listed Person, and other attempts to acquire ASSA ABLOY Door Security Solutions Canada products in violation of Economic Sanctions and Export Control Laws. The Customer will, to the best of its abilities, cooperate with ASSA ABLOY Door Security Solutions Canada to facilitate compliance with Economic Sanctions and Export Control Laws and will upon ASSA ABLOY Door Security Solutions Canada's request provide ASSA ABLOY Door Security Solutions Canada with true, complete and correct copies of all documentation relating to any business dealings involving the Product, including but not limited to, end-user certifications, information concerning compliance with the obligations under above paragraphs b)- e) in this Section 1.1, and other information as may be required by ASSA ABLOY Door Security Solutions Canada within two weeks of the simple request of such information.

1.2 ASSA ABLOY Door Security Solutions Canada shall not be obliged to make any payment or take any other action if ASSA ABLOY Door Security Solutions Canada believes in good faith that such action may constitute a violation, contribute to a violation, or constitute a circumvention of any Economic Sanctions and Export Control Laws.

1.3 This agreement may be terminated immediately by ASSA ABLOY Door Security Solutions Canada by written notice to the Customer if:

- (a) the Customer fails to provide any notice required under this Section 1.1 above, or should ASSA ABLOY Door Security Solutions Canada determine, in its sole discretion, that any representation or warranty set forth in Section 1.1 above has failed to be true and correct at any time;
- (b) the Customer has misrepresented or failed to properly disclose any material fact, or to provide any documentation, certifications or information requested by ASSA ABLOY Door Security Solutions Canada; or,
- (c) either party's ability to fulfil an obligation under this agreement is materially affected by the imposition of restrictions in Economic Sanctions and Export Control Laws.

1.4 Upon any such termination, this agreement and all rights and obligations hereunder shall immediately terminate, provided that the Customer shall remain liable to ASSA ABLOY Door Security Solutions Canada for any breach of its obligations hereunder.

1.5 The Customer shall indemnify ASSA ABLOY Door Security Solutions Canada and its affiliates, directors, officers, employees, advisors, agents and holders of its equity interests (collectively, "Indemnitees") against, and shall hold each Indemnitee harmless from, any and all third party claims, damages and liabilities, including the reasonable fees, charges and disbursements of counsel, incurred by or asserted against any Indemnitee arising out of, in connection with, or as a result of (a) any representation or warranty set forth in Section 1.1 above not being true and correct when made, (b) any breach by the Supplier of any obligation under Section 1.1 or 1.2 above, or (c) any claim, litigation, investigation or proceeding relating to any of the foregoing, whether based on contract, tort or any other theory. This indemnity shall survive the termination of this agreement indefinitely.

i) Le Client fournira toutes les informations relatives aux demandes de Produits qu'il soupçonne de violer ou de contourner les Sanctions Économiques et les Lois sur le Contrôle des Exportations, y compris les demandes de ou au nom d'une Personne Inscrite, et d'autres tentatives d'acquiescer des produits d'ASSA ABLOY Door Security Solutions Canada en violation des Sanctions Économiques et des Lois sur le Contrôle des Exportations. Le Client coopérera, au mieux de ses capacités, avec ASSA ABLOY Door Security Solutions Canada pour faciliter le respect des Sanctions Économiques et des Lois sur le Contrôle des Exportations et, à la demande d'ASSA ABLOY Door Security Solutions Canada, fournira à ASSA ABLOY Door Security Solutions Canada des copies véridiques, complètes et correctes de tous les documents relatifs à toutes les transactions commerciales impliquant le Produit, y compris, mais sans s'y limiter, les certifications de l'utilisateur final, les informations concernant le respect des obligations en vertu des paragraphes b) à e) ci-dessus dans la présente Section 1.1, et d'autres informations pouvant être requises par ASSA ABLOY Door Security Solutions Canada dans les deux semaines suivant la simple demande de ces informations.

1.2 ASSA ABLOY Door Security Solutions Canada ne sera pas obligé d'effectuer un paiement ou de prendre toute autre mesure si ASSA ABLOY Door Security Solutions Canada croit de bonne foi que cette action peut constituer une violation, contribuer à une violation ou constituer un contournement des Sanctions Économiques et des Lois sur le Contrôle des Exportations.

1.3 Le présent accord peut être résilié immédiatement par ASSA ABLOY Door Security Solutions Canada par avis écrit au Client si :

- (a) le Client ne fournit pas tout avis requis en vertu de la présente Section 1.1 ci-dessus, ou si ASSA ABLOY Door Security Solutions Canada détermine, à sa seule discrétion, que toute déclaration ou garantie énoncée à la Section 1.1 ci-dessus n'a pas été vraie et correcte à tout moment;
- (b) le Client a fait une fausse déclaration ou a omis de divulguer correctement un fait important, ou de fournir toute documentation, certification ou information demandée par ASSA ABLOY Door Security Solutions Canada; ou,
- (c) la capacité de l'une ou l'autre des parties à remplir une obligation en vertu du présent accord est sensiblement affectée par l'imposition de restrictions dans les Sanctions Économiques et les Lois sur le Contrôle des Exportations.

1.4 Lors d'une telle résiliation, le présent accord et tous les droits et obligations en vertu des présentes seront immédiatement résiliés, à condition que le Client reste responsable envers ASSA ABLOY Door Security Solutions Canada de tout manquement à ses obligations en vertu des présentes.

1.5 Le Client indemnifiera ASSA ABLOY Door Security Solutions Canada et ses sociétés affiliées, administrateurs, dirigeants, employés, conseillers, agents et détenteurs de ses participations (collectivement, les "Indemnisés") contre, et tiendra chaque Indemnisé à l'abri de toute réclamation, dommage et responsabilité de tiers, y compris les honoraires, frais et débours raisonnables des avocats, encourus par ou revendiqués contre tout Indemnisé découlant de, en relation avec, ou à la suite de (a) toute déclaration ou garantie énoncée à la Section 1.1 ci-dessus qui n'est pas vraie et correcte lorsqu'elle est faite, (b) toute violation par le Fournisseur de toute obligation en vertu de la Section 1.1 ou 1.2 ci-dessus, ou (c) toute réclamation, litige, enquête ou procédure relative à l'un de ce qui précède, qu'elle soit basée sur un contrat, un délit ou toute autre théorie. Cette indemnité survivra indéfiniment à la résiliation de cet accord.

GALLERY SPECIALTY HARDWARE STANDARD TERMS AND CONDITIONS OF SALE



For the purposes of this part of the agreement under the heading “Export Control and Sanctions”,

“Economic Sanctions and Export Control Laws” means all economic sanctions and export control laws, regulations, rules or restrictive measures, including but not limited to import and export restrictions on materials, intellectual property, other intangible personal property, services, items and transactions, adopted and enforced by governmental authorities of Canada, the EU, UK, UN, USA or any other relevant governmental or regulatory authority, applicable to the ASSA ABLOY Door Security Solutions Canada or the Customer.

“Listed Person” means individuals and entities listed, or parties that are determined to be owned or controlled by one or more individuals or entities listed, in Economic Sanctions and Export Control Laws.

“Military End Use” means use of products, in their entirety or in part, for any military end-use or by any military end user, including for any purpose in connection with chemical, biological or nuclear weapons, military items or by any national armed services (army, navy, marine, air force, or coast guard), national guard and national police, government intelligence or reconnaissance organisations.

COMPLIANCE WITH ANTI-TRUST, ANTI-CORRUPTION AND DATA PRIVACY LAWS:

The Customer, its directors, officers, and employees shall perform their obligations under these Terms and Conditions in full compliance with the ASSA ABLOY Code of Conduct which is accessible online at: [Our Code of Conduct for business partners | ASSA ABLOY](#)



[Our Code of Conduct for business partners | ASSA ABLOY](#)

Aux fins de la présente partie de l'accord sous le titre “Contrôle des Exportations et Sanctions”,

“Sanctions Économiques et Lois sur le Contrôle des Exportations” désigne toutes les sanctions économiques et les lois, réglementations, règles ou mesures restrictives sur le contrôle des exportations, y compris, mais sans s’y limiter, les restrictions à l’importation et l’exportation de matériaux, de propriété intellectuelle, d’autres biens personnels incorporels, de services, d’articles et de transactions, adoptées et appliquées par les autorités gouvernementales du Canada, de l’UE, du Royaume-Uni, des Nations Unies, des États-Unis ou de toute autre autorité gouvernementale ou réglementaire pertinente, applicables à ASSA ABLOY Door Security Solutions Canada ou au Client.

“Personne Inscrite” désigne les personnes et entités énumérées, ou les parties qui sont déterminées comme étant détenues ou contrôlées par une ou plusieurs personnes ou entités énumérées, dans les Sanctions Économiques et les Lois sur le Contrôle des Exportations.

“Utilisation finale militaire” désigne l’utilisation de produits, en totalité ou en partie, pour toute utilisation finale militaire ou par tout utilisateur final militaire, y compris à toute fin en relation avec des armes chimiques, biologiques ou nucléaires, des articles militaires ou par tout service armé national (armée de terre, marine, corps des marines, armée de l’air ou garde côtière), garde nationale et police nationale, organismes de renseignement ou de reconnaissance gouvernementaux.

RESPECT DES LOIS ANTITRUST, ANTICORRUPTION ET SUR LA CONFIDENTIALITÉ DES DONNÉES :

Le Client, ses administrateurs, dirigeants et employés doivent exécuter leurs obligations au titre des présentes Conditions Générales en respectant pleinement le Code de Conduite d’ASSA ABLOY, accessible en ligne à l’adresse suivante : [Notre Code de Conduite pour les partenaires commerciaux | ASSA ABLOY](#)



[Notre Code de Conduite pour les partenaires commerciaux | ASSA ABLOY](#)

SECTION A MISCELLANEOUS DOOR HARDWARE

PRODUCT NUMBER	DESCRIPTION	FINISH	LIST PRICE
GSH 1	Ball Catch	C3, C26D	\$16.50
GSH 1	Ball Catch	C26, C15, C15A, C5, C10B, C19	\$20.25
GSH 2	Roller Catch	C3, C26D	\$15.75
GSH 2	Roller Catch	C26, C15A, C5, C10B	\$17.75
GSH 9	Hinge Filler Plate	CP	\$10.25
GSH 11	Door Guard	26D	\$25.50
GSH 14	Flush Bolt 4"	C3, C26D	\$30.50
GSH 14	Flush Bolt 4"	C26, C15, C15A, C5, C10B, C19	\$35.00
GSH 15	Flush Bolt 6"	C3, C26D	\$41.25
GSH 15	Flush Bolt 6"	C26, C15, C15A, C5, C10B	\$47.50
GSH 16	Window Lifts	C3, C26D	\$13.25
GSH 16	Window Lifts	C26, C15A, C5, C10B	\$15.25
GSH 17	Modern Door Guard	C3, C10B, C19, C26, C26D	\$29.50
GSH 18	Window Lock	C3, C26D	\$26.00
GSH 18	Window Lock	C26, C15A, C5, C10B	\$29.75
GSH 19	Flush Pull	C3, C26D	\$31.75
GSH 19	Flush Pull	C26, C15, C15A, C5, C10B, C10, C32D, C19	\$36.75
GSH 19SQ	Flush Pull	C19, C32D	\$34.50
GSH 20	Sliding Door Edge Pull	C3, C26D, C4	\$22.25
GSH 20	Sliding Door Edge Pull	C26, C15, C15A, C5, C10B, C19	\$25.50
GSH 21	Elbow Catch	C3, C26D	\$8.25
GSH 21	Elbow Catch	C26, C15, C15A, C5, C10B	\$9.50
GSH 22	T-Strike Cut Out	CP	\$3.75
GSH 22	T-Strike Cut Out	C26D	\$4.50
GSH 22	T-Strike Blank	CP	\$3.75
GSH 22	T-Strike Blank	C26D	\$4.50
GSH 23	ANSI Blank Strike Short Lip	CP	\$6.25
GSH 23	ANSI Blank Strike Short Lip	C26D	\$7.00
GSH 23	ANSI Blank Strike	CP	\$5.75
GSH 23	ANSI Blank Strike	C26D	\$6.25
GSH 23 CFL	ANSI Cut For Latch	CP	\$9.50
GSH 23 CFL	ANSI Cut For Latch	C26D	\$15.25
GSH 25-1	Steel Astragal 1-1/2" (Price Per Foot)	CP	\$19.75
GSH 25-2	Steel Astragal 2" (Price Per Foot)	CP	\$21.50
GSH 25A-1	Stainless Steel Astragal 1-1/2" (Price Per Foot)	C32D	\$28.50
GSH 25A-2	Stainless Steel Astragal 2" (Price Per Foot)	C32D	\$31.00
GSH 26	Standardized Blank	CP	\$7.50
GSH 27	Standardized Blank	CP	\$7.50
GSH 28	Blank Latch Front	CP	\$7.50
GSH 29	Blank Latch Front	CP	\$7.50

SECTION A MISCELLANEOUS DOOR HARDWARE



PRODUCT NUMBER	DESCRIPTION	FINISH	LIST PRICE
GSH 70 T/B	Surface Bolt C/W Top or Bottom Striker	C26D, C32D, C19	\$70.50
GSH 70 T/B UL	Surface Bolt C/W Top or Bottom Striker	C26D	\$76.75
GSH 72	Dutch Bolt 8"	C3, C26	\$94.50
GHS 72	Dutch Bolt 8"	C4, C26D	\$113.50
GSH 72	Dutch Bolt 12"	C3, C26	\$119.25
GSH 72	Dutch Bolt 12"	C4, C26D	\$138.25
GSH 72	Dutch Bolt 24"	C3, C26	\$238.50
GSH 72	Dutch Bolt 24"	C4, C26D	\$260.00
GSH 73	Solid Brass 3"	C3, C4, C26, C26D	\$19.75
GSH 73	Solid Brass 3"	C10	\$20.25
GSH 73	Solid Brass 3"	C10B	\$22.25
GSH 74	Solid Brass 4"	C3, C4, C26, C26D	\$22.25
GSH 74	Solid Brass 4"	C10	\$24.00
GSH 74	Solid Brass 4"	C10B	\$25.50
GSH 75	Solid Brass 5"	C3, C4, C26, C26D	\$25.50
GSH 75	Solid Brass 5"	C10	\$26.00
GSH 75	Solid Brass 5"	C10B	\$28.00
GSH 76	Solid Brass 6"	C3, C4, C26, C26D	\$28.00
GSH 76	Solid Brass 6"	C10	\$29.25
GSH 76	Solid Brass 6"	C10B	\$30.50
GSH 199	Doorviewer 160° 90min	C26D	\$14.00
GSH 199	Doorviewer 160° 90min	C19	\$16.25
GSH 199B	Doorviewer 180° 90min	C26D	\$19.75
GSH 199B	Doorviewer 180° 90min	C19, C26	\$22.50
GSH 200	Dome Door Stop	C3, C10, C26	\$9.00
GSH 200	Dome Door Stop	C4	\$9.00
GSH 200	Dome Door Stop	C10B	\$9.00
GSH 200	Dome Door Stop	C26D	\$7.50
GSH 200S	Dome Door Stop	C32D	\$10.75
GSH 200B	Dome Door Stop	C3, C4, C10, C26, C26D	\$10.75
GSH 200B	Dome Door Stop	C10B, C19	\$11.50
GSH 201	1/2" Riser	C3, C26D	\$7.50
GSH 209	High & Low Rise, Spring Loaded Stop	C3, C4, C26, C26D, C10B	\$9.00
GSH 209	High & Low Rise, Spring Loaded Stop	C19	\$9.50
GSH 209	High & Low Rise, Spring Loaded Stop	C32D	\$17.00
GSH 210	Decorative floor stop "non-directional"	C26, C3, C15	\$33.00
GSH 211	Spring Loaded Floor Stop	C32D	\$100.25
GSH 212	Square Door Stop	C19	\$34.50
GSH 212	Square Door Stop	C15	\$27.75

SECTION A MISCELLANEOUS DOOR HARDWARE

PRODUCT NUMBER	DESCRIPTION	FINISH	LIST PRICE
GSH 218	Dome Door Stop	C3,C4,C10,C26	\$10.25
GSH 218	Dome Door Stop	C10B,C19	\$10.25
GSH 218	Dome Door Stop	C26D	\$8.25
GSH 218B	Dome Door Stop	C3, C4, C10, C26, C26D	\$11.50
GSH 218B	Dome Door Stop	C10B	\$11.50
GSH 218S	Dome Door Stop	C32D	\$94.50
GSH 231	Wall Stop	C15, C19	\$18.00
GSH 232	Wall Stop	C15, C19	\$18.00
GSH 240	Wall Stop	C3, C4, C10, C10B, C26D	\$12.75
GSH 240	Wall Stop	C32D	\$11.50
GSH 240B	Wall Stop	C3, C4, C10, C10B	\$19.75
GSH 250	Wall Stop	C3, C4,C10, C10B, C26D	\$12.75
GSH 250	Wall Stop	C32D	\$11.50
GSH 250B	Wall Stop	C3,C4,C10,C10B	\$19.75
GSH 260	Square Wall Stop	C15, C19	\$32.00
GSH 270 X	Floor Stop Solid Brass	C3,C4,C10,C26,C26D	\$35.00
GSH 270 X	Floor Stop Solid Brass	C10B	\$36.75
GSH 270HOLD HX	Add To Above Prices		\$36.75
GSH 272	Floor Stop Solid Brass	C3,C4,C10,C10B,C26,C26D	\$37.25
GSH 272HOLD	Add To Above Price		\$35.00
GSH 273	Floor Stop Solid Brass	C3,C4,C10,C10B,C26,C26D	\$39.25
GSH 273HOLD	Add To Above Price		\$35.00
GSH 275	Baseboard Stop	C15, C19	\$26.00
GSH 280A	Heavy Duty Floor Stop	C3	\$178.75
GSH 280A	Heavy Duty Floor Stop	C4,C10	\$120.00
GSH 280A	Heavy Duty Floor Stop	C10B,C26D	\$125.50
GSH 280A	Heavy Duty Floor Stop	C26	\$178.75
GSH 280AHOLD	Add To Above Price		\$36.75
GSH 280B	Heavy Duty Floor Stop	C3	\$176.25
GSH 280B	Heavy Duty Floor Stop	C4, C10	\$118.00
GSH 280B	Heavy Duty Floor Stop	C10B, c28	\$123.00
GSH 280B	Heavy Duty Floor Stop	C26D	\$184.00
GSH 280BHOLD	Add To Above Price		\$36.75
GSH 281	Heavy Duty Floor Stop	C3,C4,C10,C10B,C26D,C19	\$41.25
GSH 281	Heavy Duty Floor Stop	C28	\$35.50
GSH 281HOLD	Add To Above Price		\$36.75
GSH 282	Heavy Duty Prison Stop	Black	\$49.50
GSH 289A	Door Holder Zinc Die Cast	C26D	\$24.25
GSH 289B	Door Holder-Solid Brass	C3,C4,C10,C10B,C26D,C19	\$42.50

SECTION A MISCELLANEOUS DOOR HARDWARE



PRODUCT NUMBER	DESCRIPTION	FINISH	LIST PRICE
GSH 291	3" Base Board Stop	C3	\$15.25
GSH 291	3" Base Board Stop	C26D,C10B, C19	\$21.50
GSH 299	Emergency Stop	C26D	\$203.00
GSH 305B	Coat Hook	C32D	\$14.75
GSH 320A	Coat Hook	C32D	\$32.75
GSH 320A	Coat Hook	C32	\$41.75
GSH 320B	Coat Hook	C32D	\$25.75
GSH 320B	Coat Hook	C32	\$32.25
GSH 358A	Coat Hook	C3	\$147.00
GSH 358A	Coat Hook	C4	\$98.25
GSH 358A	Coat Hook	C26	\$162.25
GSH 358A	Coat Hook	C26D	\$107.75
GSH 358B	Coat Hook	C3	\$133.25
GSH 358B	Coat Hook	C4	\$88.75
GSH 358B	Coat Hook	C26	\$152.25
GSH 358B	Coat Hook	C26D	\$102.75
GSH 358C	Coat Hook	C3	\$83.00
GSH 358C	Coat Hook	C4	\$55.25
GSH 358C	Coat Hook	C26	\$99.00
GSH 358C	Coat Hook	C26D	\$66.00
GSH 359	Coat Hook	C26D	\$24.00
GSH 390	Coat Hook	C3	\$50.00
GSH 390	Coat Hook	C4	\$33.00
GSH 390	Coat Hook	C26	\$54.50
GSH 390	Coat Hook	C26D	\$36.75

SECTION A
MISCELLANEOUS DOOR HARDWARE

PRODUCT NUMBER	DESCRIPTION	FINISH	LIST PRICE
GSH 391	Coat Hook	C3	\$59.50
GSH 391	Coat Hook	C4	\$36.75
GSH 391	Coat Hook	C26	\$64.75
GSH 391	Coat Hook	C26D	\$43.00
GSH 392	Coat Hook	C3	\$71.75
GSH 392	Coat Hook	C4	\$48.25
GSH 392	Coat Hook	C26	\$77.25
GSH 392	Coat Hook	C26D	\$52.00
GSH 306 B	Coat Hook	C10,C10B,C26D	\$102.75
GSH 307	Coat Hook	C3,C4,C10,C10B,C26D	\$35.50
GSH 307	Coat Hook	C19	\$38.00
GSH 307B	Coat Hook	C3,C4,C10,C10B,C26D	\$35.50
GSH 307B	Coat Hook	C19	\$38.00
GSH 308A	Hat and Coat Hook	C3	\$82.50
GSH 308A	Hat and Coat Hook	C4	\$55.25
GSH 308A	Hat and Coat Hook	C10	\$67.25
GSH 308A	Hat and Coat Hook	C10B	\$72.25
GSH 308A	Hat and Coat Hook	C26	\$107.75
GSH 308A	Hat and Coat Hook	C26D	\$72.25
GSH 308B	Hat and Coat Hook	C3, C4, C26, C10B, C26D	\$64.75
GSH 308B	Hat and Coat Hook	C19	\$100.25
GSH 308C	Hat and Coat Hook	C3	\$77.25
GSH 308C	Hat and Coat Hook	C4	\$52.00
GSH 308C	Hat and Coat Hook	C10	\$62.25
GSH 308C	Hat and Coat Hook	C10B	\$76.00
GSH 308C	Hat and Coat Hook	C26	\$111.75
GSH 308C	Hat and Coat Hook	C26D	\$74.75
GSH 309	Coat Hook	C4,C26D	\$131.25
GSH 309A	Coat Hook	C4,C26D	\$93.75
GSH 310	Coat Hook	C4,C26D	\$131.25
GSH 310B	Coat Hook	C4,C26D	\$93.75
GSH 311	Hat and Coat Hook	C4	\$63.50
GSH 311	Hat and Coat Hook	C26D	\$69.00
GSH 317	Cabinet Pull 3/4" DIA. 1 1/4" Long	C32D	\$17.75
GSH 340	Coat Hook	C3,C26,C26D	\$26.00
GSH 341	Coat Hook	C26D	\$30.50
GSH 342	Coat Hook	C32D	\$19.75

SECTION A MISCELLANEOUS DOOR HARDWARE



PRODUCT NUMBER	DESCRIPTION	FINISH	LIST PRICE
GSH 343	Coat Hook	C32D	\$15.75
GSH 343	Coat Hook	C32	\$23.75
GSH 343B	Coat Hook	C32D	\$12.75
GSH 344	Coat Hook	C3,C26,C26D,C15,C19	\$33.00
GSH 345	Coat Hook	C32D	\$47.00
GSH 401	Extension Flush Bolt	C3, C4, C10, C26, C26D	\$50.75
GSH 401	Extension Flush Bolt	C10B	\$53.25
GSH 401 UL	Extension Flush Bolt	C3,C4,C10,C26 C26D	\$53.25
GSH 401 UL	Extension Flush Bolt	C10B,C19	\$71.75
GSH 401 WD	Wood Door Flush Bolt	C26D	\$84.75
GSH 403	Roller Latch	C3,C4,C10, C10B, C15, C19, C26, C26D	\$104.25
GSH 404H	Roller Latch	C3,C4,C10,C26,C26D	\$84.75
GSH 404H	Roller Latch	C10B,C19	\$86.25
GSH 404HS	Roller Latch c/w Stainless Roller	C32D	\$141.00
GSH 404SO	Strike only	C26D	\$14.75
GSH 405H	Roller Latch c/w Strike	C3,C4,C10,C26,C26D	\$98.50
GSH 405H	Roller Latch c/w Strike	C10B,C19	\$101.00
GSH 405HS	Roller Latch c/w Stainless Roller	C32D	\$154.75
GSH 405SO	Strike only	C26D	\$14.75
GSH 406H	Roller Latch c/w Strike	C3,C4,C10,C26,C26D	\$141.00
GSH 406H	Roller Latch c/w Strike	C10B	\$142.50
GSH 406HS	Roller Latch c/w Stainless Roller	C32D	\$197.25
GSH 406SO	Strike only	C26D	\$56.25
GSH 407H	Roller Latch c/w Strike	C3,C4,C10,C26,C26D	\$141.00
GSH 407H	Roller Latch c/w Strike	C10B	\$142.50
GSH 407HS	Roller Latch c/w Stainless Roller	C32D	\$197.25
GSH 407SO	Strike only	C26D	\$56.25
GSH 410 / 412	Dust Proof Strike and Plate	C26D	\$46.50
GSH 413	Rabbetted Flush Bolt Adapter	Brass	\$64.25
GSH 414 / 415	Squash Court / Drop Ring Pull	C4	\$492.25
GSH 414 / 415	Squash Court / Drop Ring Pull	C10	\$511.75
GSH 414 / 415	Squash Court / Drop Ring Pull	C10B	\$537.75
GSH 414 / 415	Squash Court / Drop Ring Pull	C26D	\$498.75
GSH 430	Decorative Floor Stop "90 Degree"	C3,C4,C26D,C10B	\$26.75
GSH 450	Lavatory Latch	C3,C4,C26,C26D	\$204.50
GSH 935	Drawer Pull 3 1/2"	C3	\$32.50
GSH 935	Drawer Pull 3 1/2"	C4	\$25.25
GSH 935	Drawer Pull 3 1/2"	C26	\$41.50
GSH 935	Drawer Pull 3 1/2"	C26D	\$32.50

SECTION A MISCELLANEOUS DOOR HARDWARE

PRODUCT NUMBER	DESCRIPTION	FINISH	LIST PRICE
GSH 945	Drawer Pull 4 1/2"	C3	\$36.00
GSH 945	Drawer Pull 4 1/2"	C4	\$27.75
GSH 945	Drawer Pull 4 1/2"	C26	\$45.50
GSH 945	Drawer Pull 4 1/2"	C26D	\$35.00
GSH 3030	Solid Brass Extruded Hinge 3" x 3"	C3,C4,C5,C14,C15,C15B,C26,C10B,C17A,C19	\$38.50
GSH 3535	Solid Brass Extruded Hinge 3.50" x 3.50"	C3,C4,C5,C14,C15,C15B,C26,C10B,C17A,C19	\$40.75
GSH 4040	Solid Brass Extruded Hinge 4" x 4"	C3,C4,C5,C14,C15,C15B,C26,C10B,C17A,C19	\$41.75
GSH 4040 BB	Solid Brass Extruded Hinge 4" x 4" Ball Bearing	C3,C4,C5,C14,C15,C15B,C26,C10B,C17A,C19	\$45.25
GSH 4540 BB	Solid Brass Extruded Hinge 4.50" x 4" Ball Bearing	C3,C4,C5,C14,C15,C15B,C26,C10B,C17A,C19	\$47.50
GSH 4545	Solid Brass Extruded Hinge 4.50" x 4.50"	C3,C4,C5,C14,C15,C15B,C26,C10B,C17A,C19	\$44.00
GSH 4545 BB	Solid Brass Extruded Hinge 4.50" x 4.50" Ball Bearing	C3,C4,C5,C14,C15,C15B,C26,C10B,C17A,C19	\$53.00
GSH 5050 BB	Solid Brass Extruded Hinge 5" x 5" Ball Bearing	C3,C4,C5,C14,C15,C15B,C26,C10B,C17A,C19	\$56.50
Ball Tips	Decorative Tips	C3,C4,C5,C14,C15,C15B,C26,C10B,C17A,C19	\$12.25
Steeple Tips	Decorative Tips	C3,C4,C5,C14,C15,C15B,C26,C10B,C17A,C19	\$12.25
Acorn Tips	Decorative Tips	C3,C4,C5,C14,C15,C15B,C26,C10B,C17A,C19	\$12.25
Urn Tips	Decorative Tips	C3,C4,C5,C14,C15,C15B,C26,C10B,C17A,C19	\$12.25
Sign #102	6" x 6" Picto Woman	Silver / Black	\$33.75
Sign #103	6" x 6" Picto Man	Silver / Black	\$33.75
Sign #104	6" x 6" Handicap Logo	Silver / Black	\$33.75
Sign #105	6" x 6" x Picto Man / Woman	Silver / Black	\$38.00
Sign #106	6" x 8" x Picto Man / Woman / Handicap	Silver / Black	\$47.50
Sign #107	6" x 6" Picto Woman	Black / White	\$33.75
Sign #108	6" x 6" Picto Man	Black / White	\$33.75
Sign #109	6" x 6" Handicap Logo	Black / White	\$33.75
Sign #110	6" x 6" x Picto Man / Woman	Black / White	\$38.00
Sign #111	6" x 8" x Picto Man / Woman / Handicap	Black / White	\$47.50
Sign #112	6" x 6" Picto Woman	Blue / White	\$33.75
Sign #113	6" x 6" Picto Man	Blue / White	\$33.75
Sign #114	6" x 6" Handicap Logo	Blue / White	\$33.75
Sign #115	6" x 6" x Picto Man / Woman	Blue / White	\$38.00
Sign #116	6" x 8" x Picto Man, Woman, Handicap	Blue / White	\$47.50

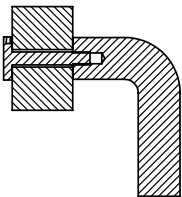
SECTION B DOOR PULLS



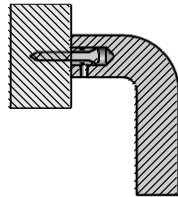
ENGRAVING				
	ROUND MATERIAL		FLAT MATERIAL	
	3/4" DIA	1" DIA	3/4" Letter	1" Letter
PULL OR PUSH	\$67.25	\$73.50	\$36.75	\$45.50
POUSSEZ	\$123.00	\$128.25	\$64.75	\$72.25
TIREZ	\$87.50	\$91.25	\$45.50	\$56.00
Engraved Door Pulls may require door handing. All engraving is painted in black by default. Custom engraving and colours available. Price on application (P.O.A.) Note: For 1-1/4" Round material Add \$5.00 to 1" price. For 1-1/2" Round material Add \$10.00 to 1" price.				
MOUNTING				
# 2	THROUGH BOLT MOUNTING single pull (default)		No extra cost	
# 4B	SPANNER HEAD SECURITY BOLT- Brass or Bronze		\$81.25	Pair (2)
# 4B	SPANNER HEAD SECURITY BOLT- Stainless Steel		\$48.25	Pair (2)
# 5	CONCEALED MOUNTNGS BOLTS B to B		\$29.25	SET
# 5-1	C/W 1 1/4" DIA. WASHERS FOR GLASS DOORS B to B		\$35.50	SET
# 5-2	SINGLE CONCEALED MTG (Specify Wood or Metal)		\$29.25	PER PULL
Note: All pulls will come with #2 mounting bolts for 1-3/4" doors unless specified otherwise #5 Mounting B to B is a set (2 pulls) for mounting back to back for 1-3/4" doors unless specified otherwise When Mounting #4B Glass and #5-1 Glass is selected then bolts for 1/2" glass will be supplied unless specified otherwise 3/8"-16 x 2-1/4" SS Mounting Bolts and washers per pair \$17.00. 5/16"-18 x 2-1/4" SS Mounting Bolts and washers per pair \$15.00. Four 4" door thickness and above add \$50.00				

MOUNTINGS AND FASTENERS

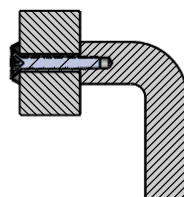
#4B Wood or Metal



#5-2 Wood

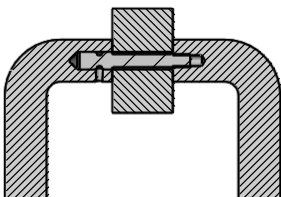


2 Wood or Metal

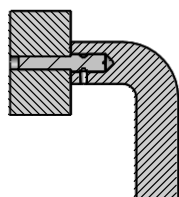


Please specify
Door thickness and
material for all Door
Pull orders.

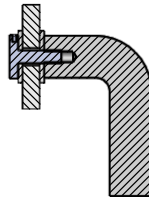
#5 Wood or Metal



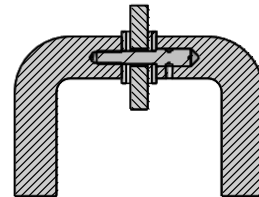
#5-2 Metal



#4B Glass



#5-1 Glass



Rivnut not included

PRODUCT NUMBER	C4 LIST PRICE	C10 LIST PRICE	C10B LIST PRICE	C15 LIST PRICE	C26D LIST PRICE	C28 LIST PRICE	C32D LIST PRICE
GSH AF-7	\$236.00	\$334.75	\$348.75	\$261.25	\$334.75		\$236.00
GSH AF-8	\$253.75	\$357.50	\$372.75	\$281.50	\$357.50		\$253.75
GSH AF-14	\$879.00	\$1117.25	\$1174.50	\$1010.75	\$1117.25	\$525.00	\$903.00
GSH AF-15	\$909.25	\$1141.50	\$1193.50	\$1046.25	\$1066.75	\$559.25	\$937.25
GSH 105	\$782.50	\$1060.25	\$1144.00	\$876.25	\$932.25	\$624.00	\$611.50
GSH 106	\$816.75	\$1095.75	\$1201.00	\$938.50	\$958.75	\$670.75	\$704.00
GSH 111	\$531.25	\$669.75	\$733.00	\$610.00	\$632.75	\$360.25	\$507.25
GSH 119	\$815.50	\$917.00	\$960.00	\$939.75	\$983.00	\$531.25	\$756.25
GSH 160 Offset Ladder Pull	P.O.A.	P.O.A.	P.O.A.	P.O.A.	P.O.A.	P.O.A.	\$551.25
GSH 161 Offset Ladder Pull	P.O.A.	P.O.A.	P.O.A.	P.O.A.	P.O.A.	P.O.A.	\$497.75
GSH 162 Straight Ladder Pull	P.O.A.	P.O.A.	P.O.A.	P.O.A.	P.O.A.	P.O.A.	\$456.50
GSH 163 Straight Ladder Pull	P.O.A.	P.O.A.	P.O.A.	P.O.A.	P.O.A.	P.O.A.	\$397.25
GSH 164 Offset Ladder Pull	P.O.A.	P.O.A.	P.O.A.	P.O.A.	P.O.A.	\$558.00	\$627.00
GSH 165 Offset Ladder Pull	P.O.A.	P.O.A.	P.O.A.	P.O.A.	P.O.A.	\$608.75	\$684.00
GSH 166 Straight Ladder Pull	P.O.A.	P.O.A.	P.O.A.	P.O.A.	P.O.A.	\$502.25	\$532.25
GSH 167 Straight Ladder Pull	P.O.A.	P.O.A.	P.O.A.	P.O.A.	P.O.A.	\$517.50	\$583.25
GSH 168	\$581.00	\$667.25	\$770.00	\$667.25	\$856.00	\$468.00	
GSH 169-1	\$267.75	\$407.00	\$421.00	\$291.75	\$322.25	\$215.50	\$272.75
GSH 169-2	\$360.25	\$592.25	\$613.75	\$384.25	\$416.00	\$270.25	\$376.75
GSH 170	\$1052.75	\$1270.75	\$1322.75	\$1108.50	\$1177.00		
GSH 171	\$1023.50	\$1251.75	\$1273.25	\$1046.25	\$1144.00		
GSH 173	\$470.50	\$579.50	\$644.25	\$569.50	\$615.00	\$414.75	
GSH 174	\$430.00	\$545.25	\$622.75	\$518.75	\$367.75	\$346.25	
GSH 181	\$739.50	\$920.75	\$1010.75	\$830.75	\$886.50	\$639.25	
GSH 900	\$106.50	\$131.75	\$142.00	\$124.25	\$133.25		
GSH 936	\$118.00	\$182.75	\$190.25	\$125.50	\$135.75		
GSH 950 (C19) \$80.00	\$60.75	\$67.25	\$72.25	\$60.75	\$67.25		
GSH 955	\$82.50	\$96.50	\$105.25		\$92.50		
GSH 960 (C19) \$72.00	\$52.00	\$58.25	\$60.75	\$54.50	\$58.25		
GSH 961	\$99.00	\$115.25	\$123.00	\$105.25	\$107.75		
GSH 980 (C19) \$18.00	\$19.00	\$20.25	\$20.25	\$19.00	\$19.00		
GSH 980B	\$26.75	\$28.00	\$30.50	\$26.75	\$28.00		
GSH 981	\$49.50	\$62.25	\$69.75	\$55.75	\$59.50	\$48.25	\$59.50
GSH 1007	\$86.25	\$120.50	\$142.00	\$100.25	\$106.50	\$47.00	\$80.00
GSH 1009	\$95.25	\$131.75	\$147.00	\$114.25	\$121.75	\$49.50	\$90.00
GSH 1012	\$110.25	\$144.50	\$158.50	\$127.00	\$135.75	\$53.25	\$105.25
GSH 1107	\$135.75	\$170.00	\$184.00	\$149.75	\$159.75	\$66.00	\$106.50
GSH 1109	\$145.75	\$180.00	\$192.75	\$163.50	\$173.75	\$68.50	\$115.25
GSH 1112	\$159.75	\$194.00	\$208.00	\$176.25	\$187.75	\$72.25	\$130.50

SECTION B DOOR PULLS



PRODUCT NUMBER	C4 LIST PRICE	C10 LIST PRICE	C10B LIST PRICE	C15 LIST PRICE	C26D LIST PRICE	C28 LIST PRICE	C32D LIST PRICE
GSH 1180-1	\$138.25	\$200.50	\$213.00	\$167.50	\$181.50	\$90.00	\$145.75
GSH 1180-2	\$204.25	\$332.25	\$343.75	\$236.00	\$246.00	\$119.25	\$194.00
GSH 1181-1	\$176.25	\$248.50	\$255.00	\$208.00	\$222.00	\$116.75	\$181.50
GSH 1181-2	\$227.00	\$364.00	\$375.50	\$276.50	\$287.75	\$139.50	\$218.00
GSH 1182-1	\$182.75	\$281.50	\$298.00	\$214.25	\$243.50	\$121.75	\$189.00
GSH 1182-2	\$248.50	\$411.00	\$425.00	\$279.00	\$291.75	\$147.00	\$230.75
GSH 1184-1	\$170.00	\$239.75	\$251.25	\$205.50	\$220.75	\$113.00	\$176.25
GSH 1184-2	\$225.75	\$359.00	\$370.50	\$272.75	\$277.75	\$135.75	\$216.75
GSH 1185-1	\$170.00	\$230.75	\$244.75	\$198.00	\$213.00	\$120.50	\$177.50
GSH 1185-2	\$236.00	\$364.00	\$375.50	\$267.75	\$277.75	\$151.00	\$228.25
GSH 1207	\$109.00	\$161.00	\$177.50	\$127.00	\$142.00	\$60.75	\$102.75
GSH 1209	\$128.25	\$175.00	\$187.75	\$143.25	\$156.00	\$68.50	\$114.25
GSH 1212	\$142.00	\$195.25	\$206.75	\$157.25	\$176.25	\$74.75	\$121.75
GSH 1707	\$96.50	\$151.00	\$163.50	\$115.25	\$128.25	\$59.50	\$93.75
GSH 1709	\$111.75	\$167.50	\$180.00	\$129.25	\$149.75	\$63.25	\$104.00
GSH 1712	\$129.25	\$190.25	\$205.50	\$156.00	\$166.25	\$66.00	\$120.50
GSH 1907	\$101.50	\$157.25	\$172.50	\$115.25	\$129.25	\$67.25	\$97.75
GSH 1909	\$109.00	\$175.00	\$194.00	\$123.00	\$137.00	\$74.75	\$189.00
GSH 1912	\$135.75	\$205.50	\$225.75	\$152.25	\$171.25	\$83.75	\$131.75
GSH 2200H	\$175.00			\$208.00	\$195.25		\$198.00
GSH 2300H	\$172.50			\$178.75	\$192.75		\$156.00
GSH 2400F							\$124.50
GSH 2500H							\$61.75
GSH 2616H	\$137.00	\$158.50	\$175.00	\$147.00	\$156.00	\$58.25	\$87.50
GSH 2620H	\$156.00	\$213.00	\$379.25	\$148.25	\$152.25	\$63.50	\$102.75
GSH 2632							\$218.00
GSH 2633							\$218.00
GSH 4007-1	\$80.00	\$119.25	\$130.50	\$93.75	\$101.50	\$47.00	\$67.25
GSH 4007-2	\$101.50	\$191.50	\$257.50	\$127.00	\$135.75	\$58.25	\$99.00
GSH 4009-1	\$82.50	\$134.50	\$145.75	\$99.00	\$107.75	\$48.25	\$74.75
GSH 4009-2	\$120.50	\$216.75	\$227.00	\$137.00	\$147.00	\$62.25	\$114.25
GSH 4012-1	\$100.25	\$154.75	\$163.50	\$111.75	\$121.75	\$52.00	\$143.25
GSH 4012-2	\$134.50	\$247.25	\$261.25	\$156.00	\$166.25	\$67.25	\$125.50
GSH 4107-1	\$110.25	\$154.75	\$165.00	\$125.50	\$134.50	\$67.25	\$99.00
GSH 4107-2	\$131.75	\$227.00	\$242.25	\$159.75	\$167.50	\$82.50	\$130.50
GSH 4109-1	\$114.25	\$168.75	\$181.50	\$165.00	\$139.50	\$69.75	\$104.00
GSH 4109-2	\$142.00	\$239.75	\$256.25	\$168.75	\$178.75	\$82.50	\$161.00
GSH 4112-1	\$123.00	\$189.00	\$199.25	\$143.25	\$153.50	\$74.75	\$113.00
GSH 4112-2	\$156.00	\$282.75	\$296.75	\$187.75	\$198.00	\$86.25	\$151.00

SECTION B
DOOR PULLS

PRODUCT NUMBER	C4 LIST PRICE	C10 LIST PRICE	C10B LIST PRICE	C15 LIST PRICE	C26D LIST PRICE	C28 LIST PRICE	C32D LIST PRICE
GSH 4207-1	\$115.25	\$158.50	\$171.25	\$130.50	\$151.00	\$66.00	\$92.50
GSH 4207-2	\$137.00	\$224.50	\$239.75	\$173.75	\$185.25	\$77.25	\$124.25
GSH 4209-1	\$129.25	\$166.25	\$182.75	\$145.75	\$156.00	\$67.25	\$100.25
GSH 4209-2	\$157.25	\$244.75	\$258.75	\$184.00	\$195.25	\$81.25	\$140.75
GSH 4212-1	\$130.50	\$192.75	\$215.50	\$158.50	\$170.00	\$71.00	\$113.00
GSH 4212-2	\$166.25	\$281.50	\$303.00	\$203.00	\$215.50	\$86.25	\$151.00
GSH 4307-1	\$109.00	\$157.25	\$178.75	\$129.25	\$138.25	\$53.25	\$87.50
GSH 4307-2	\$137.00	\$243.50	\$265.00	\$166.25	\$172.50	\$71.00	\$119.25
GSH 4309-1	\$115.25	\$168.75	\$189.00	\$139.50	\$148.25	\$58.25	\$97.75
GSH 4309-2	\$147.00	\$267.75	\$293.00	\$176.25	\$187.75	\$76.00	\$138.25
GSH 4312-1	\$131.75	\$192.75	\$216.75	\$154.75	\$166.25	\$63.50	\$111.75
GSH 4312-2	\$165.00	\$305.75	\$329.75	\$219.50	\$210.50	\$82.50	\$151.00
GSH 4607-1	\$96.50	\$140.75	\$163.50	\$114.25	\$125.50	\$55.75	\$82.50
GSH 4607-2	\$118.00	\$213.00	\$239.75	\$148.25	\$159.75	\$67.25	\$113.00
GSH 4609-1	\$107.75	\$163.50	\$186.50	\$127.00	\$140.75	\$60.75	\$92.50
GSH 4609-2	\$135.75	\$246.00	\$266.25	\$166.25	\$180.00	\$73.50	\$131.75
GSH 4612-1	\$121.75	\$189.00	\$213.00	\$144.50	\$161.00	\$66.00	\$104.00
GSH 4612-2	\$154.75	\$282.75	\$310.75	\$189.00	\$205.50	\$81.25	\$140.75
GSH 4707-1	\$95.50	\$141.00	\$163.75	\$114.25	\$125.75	\$55.75	\$82.50
GSH 4707-2	\$118.00	\$213.25	\$240.00	\$148.50	\$160.00	\$67.25	\$113.00
GSH 4709-1	\$108.00	\$163.75	\$186.75	\$127.00	\$141.00	\$61.00	\$92.75
GSH 4709-2	\$135.75	\$246.25	\$266.50	\$166.25	\$180.25	\$73.75	\$132.00
GSH 4712-1	\$122.00	\$189.25	\$213.25	\$144.75	\$144.75	\$66.00	\$104.00
GSH 4712-2	\$155.00	\$283.00	\$311.00	\$189.25	\$205.75	\$81.25	\$141.00
GSH 4900							\$153.00
GSH 5000-1 up to 34"	\$210.50	\$394.50	\$426.25	\$242.25	\$269.00	\$124.25	\$213.00
Extra cost per inch	\$7.50	\$10.25	\$10.25	\$9.00	\$9.00	\$6.25	\$7.50
GSH 5000-2 up to 34"	\$309.50	\$546.50	\$636.75	\$327.25	\$357.50	\$159.75	\$324.75
Extra cost per inch	\$10.25	\$12.75	\$12.75	\$11.50	\$11.50	\$9.00	\$10.25
GSH 6012	\$234.50			\$249.75	\$256.25	\$137.00	\$265.00

"Finishes C3, C9, C14, C26 and C32 add 50% to C4, C10, C15, C26D and C32D." Note: Type 316 add 60% to C32D Price
Note: Type 316 add 60% to C32D Price Extra post for 5000 add \$80.00"

SECTION C GRAB BARS



PRODUCT NUMBER	SERIES 50 1-1/4" O.D. STAINLESS STEEL EXPOSED	SERIES 51 1-1/4" O.D. STAINLESS STEEL CONCEALED	SERIES 60 1-1/2" O.D. STAINLESS STEEL EXPOSED	SERIES 61 1-1/2" O.D. STAINLESS STEEL CONCEALED	LENGTH OF PEENING (INCHES)
GSH C02	\$84.00	\$101.00	\$110.25	\$131.50	4
GSH C02B	\$87.50	\$103.25	\$115.00	\$134.50	8
GSH C03	\$91.00	\$105.50	\$119.75	\$137.25	10
GSH C04	\$98.75	\$113.00	\$130.25	\$147.50	16
GSH C05	\$106.25	\$120.25	\$143.75	\$161.00	22
GSH C05B	\$109.00	\$123.00	\$147.50	\$165.00	24
GSH C06	\$114.25	\$129.00	\$155.00	\$172.50	28
GSH C07	\$132.50	\$147.25	\$174.50	\$199.50	40
GSH C08	\$190.00	\$216.00	\$258.25	\$284.50	28
GSH C09	\$190.00	\$216.00	\$258.25	\$284.50	28
GSH C10	\$183.75	\$206.50	\$248.00	\$269.50	20
GSH C11	\$183.75	\$206.50	\$248.00	\$269.50	20
GSH C12	\$209.00	\$231.00	\$282.75	\$302.75	36
GSH C12C	\$265.50	\$287.50	\$339.00	\$359.00	36
GSH C13	\$209.00	\$231.00	\$282.75	\$302.75	36
GSH C14	\$307.75	\$342.00	\$444.00	\$478.75	48
GSH C15	\$307.75	\$342.00	\$444.00	\$478.75	48
GSH C16	\$226.00	\$261.25	\$290.75	\$325.50	48
GSH C17	\$212.00	\$250.75	\$284.50	\$319.50	36
GSH C18	\$354.00	\$386.25	\$515.50	\$550.50	78
GSH C19	\$354.00	\$386.25	\$515.50	\$550.50	78
GSH C20	\$340.00	\$375.50	\$500.00	\$533.75	54
GSH C21	\$340.00	\$375.50	\$500.00	\$533.75	54
GSH C22	\$237.75	\$261.25	\$284.00	\$316.00	26
GSH C23	\$237.75	\$261.25	\$284.00	\$316.00	26
GSH C24	\$252.50	\$277.25	\$326.50	\$361.75	32
GSH C25	\$252.50	\$277.25	\$326.50	\$361.75	32
GSH C26	\$381.75	\$410.75	\$465.00	\$500.00	32
GSH C27	\$163.00	\$185.00	\$191.50	\$224.00	22
GSH C28	\$180.00	\$211.00	\$273.50	\$301.25	41
GSH C29	\$176.25	\$202.00	\$256.75	\$283.00	41
GSH C30	\$105.00	\$123.50	\$145.75	\$163.25	16
GSH C31	\$177.50	\$212.50	\$308.25	\$328.75	36
GSH C32	\$370.25	\$408.50	\$462.75	\$492.50	40
GSH C33	\$274.50	\$296.75	\$317.00	\$331.25	28
GSH C34	\$274.50	\$296.75	\$317.00	\$331.25	28
GSH C35A	\$881.50				16

PRODUCT NUMBER	SERIES 50 1-1/4" O.D. STAINLESS STEEL EXPOSED	SERIES 51 1-1/4" O.D. STAINLESS STEEL CONCEALED	SERIES 60 1-1/2" O.D. STAINLESS STEEL EXPOSED	SERIES 61 1-1/2" O.D. STAINLESS STEEL CONCEALED	LENGTH OF PEENING (INCHES)
GSH C35AT	\$944.75				16
GSH C36	\$340.50	\$371.25	\$452.75	\$482.50	42
GSH C37	\$158.50	\$165.75	\$353.50	\$371.50	36
GSH C38	\$255.75	\$280.00	\$326.50	\$352.50	34
GSH C39	\$255.75	\$280.00	\$326.50	\$352.50	34
GSH C40	\$194.00	\$220.75	\$236.00	\$261.25	24
GSH C41	\$194.00	\$220.75	\$236.00	\$261.25	24
GSH C42 30"	\$513.75				22
GSH C42T	\$577.00				
GSH BR-50	\$311.50				
GSH BR-51		\$311.50			
PEENED	1-1/4" O.D.	1-1/4" O.D.	1-1/2" O.D.	1-1/2" O.D.	PRICE UNIT
STAINLESS	\$1.25	\$1.25	\$1.50	\$1.50	PER INCH
Anchoring Devices (Non-Standard Mountings)					
Type A (Per Flange)	\$28.50	\$28.50	\$28.50	\$28.50	
Type B (Per Flange)	\$57.00	\$57.00	\$57.00	\$57.00	
Type C (Per Flange)	\$23.50	\$23.50	\$23.50	\$23.50	
Type D (Per Flange)	\$14.50	\$14.50	\$14.50	\$14.50	
Note: Add 30% for C19 (Black) No Peening on C19 (Black)					

SECTION D FLATWARE



	GSH 80 KICK PLATES	81 Push Plates
32D 20ga Type 304	\$14.25	\$16.25
	GSH 80A KICK PLATES	GSH 81A PUSH PLATES
C3 18ga	\$72.25	\$83.25
C4 18ga	\$64.25	\$74.25
C10 18ga	\$63.00	\$72.25
C10B 18ga	\$94.75	\$108.75
C19 18ga	\$37.25	\$42.75
C28 18ga	\$15.25	\$17.75
C32D 18ga Type 304	\$16.00	\$18.50
C32 18ga Type 304	\$24.00	\$27.75
GSH 80B .0062 Type 304 C32D	\$23.25	81B Push Plate \$26.75
GSH 80C .1025 Type 304 C32D	\$96.75	81C Push Plate \$100.75
GSH 82 to 85N	P.O.A.	P.O.A.
GSH 78 Clear Plastic Plates	\$22.50	\$25.75
GSH 81A Custom Escutcheons per Hole		\$20.50
Engraving		
PICTO Male or Female 3 1/2" HIGH 32D		\$65.50
PICTO HANDICAP 3 1/2" HIGH		\$78.00
	3/4" Letter	1" Letter
PULL OR PUSH	\$36.75	\$45.50
POUSSEZ	\$64.75	\$72.25
TIREZ	\$45.50	\$56.00
All engraving is painted in black by default. Custom engraving and colours P.O.A.		
DOOR EDGES		
GSH 30N to GSH 46N		P.O.A.
GSH 47N and 48N U.L.C.		P.O.A.
JAMB EDGE/CORNER GUARD		
GSH J82		P.O.A.
GSH J83		P.O.A.
ARMOR PLATES U.L.C.		
GSH 90F	C32D	\$21.75
Note: P.O.A (Price on Application Contact Office) Kickplates and pushplates are priced per 100 Square inches		

FRAME GUARDS U.L.C.		
GSH 50N	C32D	P.O.A.
MS	#6-32 x 3/8 Machine Screws per 100	Stainless Steel \$32.00
		Brass or Bronze \$44.00
WS	#6 x 5/8 Wood Screws per 100	Stainless Steel \$32.00
		Brass or Bronze \$44.00
ROLL OF TAPE		
1 ROLL 65M		\$326.00
<ul style="list-style-type: none"> • #6 x 5/8" Oval Head Wood Screws Supplied Standard unless specified otherwise • Brass and bronze kick plates larger in height than 24" - add 30% to list price • All Kick plates / Push plates priced per hundred square inches • Two sided tape mounting will have \$5.00 List per hundred square inch added to kick or push plate price • Kick and Push Plates will be priced to nearest full inch (Rounded up) Note: P.O.A. means Price on Application" 		

SECTION E

GUARD BARS & GUIDE RAILS



PRODUCT	SIZE	C28 .50" X 1.50"	C28 .50" X 2"	C32D .50" X 1.50"	C32D .50" X 2"
GSH FGR-601	30" x 30"	\$334.75	\$361.50	\$517.50	\$749.50
GSH FGR-602	30" x 30"	\$564.50	\$629.00	\$1046.25	\$1248.00
GSH FGR-603	30" x 30"	\$669.75	\$766.00	\$1283.50	\$1581.50
	42" x 30"	\$810.50	\$1358.25	\$1672.75	\$1840.00
GSH FGR-604	30" x 30"	\$796.50	\$913.00	\$1534.50	\$1902.50
	42" x 30"	\$966.50	\$1623.50	\$2011.50	\$2214.75
GSH FBB-651	32" c/c	\$203.00	\$238.50	\$418.50	\$511.25
GSH FBB-652	32" c/c	\$192.75	\$219.50	\$397.00	\$482.00
GSH FBB-653	32" c/c	\$195.25	\$223.25	\$393.25	\$476.75
Prices above are for the standard size and designs. Custom designs are available.					
"Optional Sizes Available. Add per inch. C28 .50" x 1.50" add \$2.80 per inch C32D .50" x 1.50" add \$7.00 per inch C28 .50" x 2" add \$3.80 per inch C32D .50" x 2" add \$8.70 per inch					

PRODUCT NUMBER	DESCRIPTION	SIZE	FINISH	LIST PRICE
GSH 800	Straight Guard Bar	34"	C28	\$206.75
GSH 800	Straight Guard Bar	34"	C32D	\$362.75
GSH 801X	Straight Guard Bar (Without Pads)	34"	C28	\$162.25
GSH 801X	Straight Guard Bar (Without Pads)	34"	C32D	\$318.25
GSH 802N	Straight Guard Bar (Offset)	34"	C28	\$364.00
GSH 802N	Straight Guard Bar (Offset)	34"	C32D	\$471.75
GSH 802X	Straight Guard Bar (Offset, Without Pads)	34"	C28	\$319.50
GSH 802X	Straight Guard Bar (Offset, Without Pads)	34"	C32D	\$414.75
GSH 803N	Straight Guard Bar (Double)	34"	C28	\$414.75
GSH 803N	Straight Guard Bar (Double)	34"	C32D	\$748.25
GSH 804N	Straight Guard Bar (Double, Offset)	34"	C28	\$541.00
GSH 804N	Straight Guard Bar (Double, Offset)	34"	C32D	\$748.25
GSH 815	Single Straight Bar	34"	C28	\$156.00
GSH 815	Single Straight Bar	34"	C32D	\$312.00
GSH 837	Push Plate and Bar	34"	C28	\$304.25
GSH 837	Push Plate and Bar	34"	C32D	\$512.50
GSH 837D	Push Plate with Double Bar	34"	C28	\$610.00
GSH 837D	Push Plate with Double Bar	34"	C32D	\$1022.25

SECTION E
GUARD BARS & GUIDE RAILS

PRODUCT NUMBER	DESCRIPTION	SIZE	FINISH	LIST PRICE
GSH 851	Guard Bar	34"	C28	\$208.00
GSH 851	Guard Bar	34"	C32D	\$362.75
GSH 851D	Guard Bar (Double)	34"	C28	\$417.25
GSH 851D	Guard Bar (Double)	34"	C32D	\$729.25
GSH 852X	Guard Bar (Without Pad)	34"	C28	\$162.25
GSH 852X	Guard Bar (Without Pad)	34"	C32D	\$318.25
GSH 855	Bumper Bar	34"	C28	\$215.50
GSH 855	Bumper Bar	34"	C32D	\$383.00
GSH 855D	Bumper Bar (Double)	34"	C28	\$432.50
GSH 855D	Bumper Bar (Double)	34"	C32D	\$771.00
GSH 856X	Bumper Bar (Without Pad)	34"	C28	\$171.25
GSH 856X	Bumper Bar (Without Pad)	34"	C32D	\$338.75

SECTION F

CONTINUOUS HINGES



930 Series Aluminum		OPENING SIZE			C28		
FULL MORTISE							
CH-931 X 83-1/8"		7'			\$311.25		
CH-931 X 95-1/8"		8'			\$343.50		
940 Series Steel							
MODEL CH-941		U.L.C.	Finish Prime Coat				
STEEL FULL MORTISE		7'	8'	10'			
		\$559.50	\$639.00	\$990.75			
MODEL CH-943							
MODEL CH-943		U.L.C.	Finish Prime Coat				
STEEL HALF WRAP EDGE GUARD		\$796.50	\$961.25	\$1321.50			
MODEL CH-944							
MODEL CH-944		U.L.C.	Finish Prime Coat				
STEEL HALF MORTISE		\$631.75	\$692.25	\$979.00			
MODEL CH-945							
MODEL CH-945		U.L.C.	Finish Prime Coat				
STEEL HALF MORTISE / GUARD		\$667.25	\$758.50	\$1160.50			
MODEL CH-946							
MODEL CH-946		U.L.C.	Finish Prime Coat				
STEEL SWING CLEAR		\$733.75	\$834.50	\$885.50			
MODEL CH-947							
MODEL CH-947		U.L.C.	Finish Prime Coat				
STEEL FULL SURFACE		\$661.50	\$743.25	\$999.25			
950 Series Stainless Steel							
MODEL CH-951		U.L.C.	Finish C32D			CH-951HD	
STAINLESS STEEL FULL MORTISE		7'	8'	10'	7'	8'	10'
		\$931.75	\$1115.25	\$1330.00	\$1,145.70	\$1,371.50	\$1,634.20
MODEL CH-952							
MODEL CH-952		U.L.C.	Finish C32D			CH-952HD	
STAINLESS STEEL FULL WRAP EDGE GUARD		7'	8'	10'	7'	8'	10'
		\$1,320.50	\$1,466.25	\$1,776.75	\$1,622.50	\$1,802.00	\$2,849.50
MODEL CH-952E		U.L.C.	Finish C32D			CH-952HD	
EXTENDED ST. ST. FULL WRAP EDGE GUARD		7'	8'	10'			
		\$1,556.25	\$1,748.25	\$2,106.25			
MODEL CH-953							
MODEL CH-953		U.L.C.	Finish C32D			CH-952HD	
STAINLESS STEEL HALF WRAP EDGE GUARD		7'	8'	10'	7'	8'	10'
		\$1,174.75	\$1,339.50	\$1,651.00	\$1,443.25	\$1,645.75	\$2,030.75

		7'	8'	10'	7'	8'	10'
MODEL CH-954	U.L.C.	Finish C32D					
STAINLESS STEEL HALF MORTISE		\$912.75	\$1014.50	\$1242.25			
MODEL CH-955	U.L.C.	Finish C32D					
STAINLESS STEEL HALF MORTISE/GUARD		\$1040.75	\$1171.00	\$1442.50			
MODEL CH-956	U.L.C.	Finish C32D					
STAINLESS STEEL SWING CLEAR		\$1,115.25	\$1,183.00	\$1,484.00			
MODEL CH-957	U.L.C.	Finish C32D					
STAINLESS STEEL FULL SURFACE		\$953.00	\$1100.00	\$1347.75			
SPECIAL FINISHES Add to List Price							
POLISHED STAINLESS (C32) 950 Series Hnges Only				\$414.75			
POWDER COATED FINISHES 940 - 950 Series Hnges				\$130.50			
NOTE: PLATED FINISHES AVAILABLE PRICE ON APPLICATION							

Geared Hinges

PART NUMBER	DESCRIPTION	LIST PRICE
GSH-HD112 83AL	83" Full Mortise Geared Hinge	\$413.25
GSH-HD112 83DU	83" Full Mortise Geared Hinge	\$439.50
GSH-HD112 95AL	95" Full Mortise Geared Hinge	\$454.25
GSH-HD112 95DU	95" Full Mortise Geared Hinge	\$483.00
GSH-HD157 83AL	83" Full Surface Geared Hinge	\$470.25
GSH-HD157 83DU	83" Full Surface Geared Hinge	\$545.50
GSH-HD157 95AL	95" Full Surface Geared Hinge	\$516.75
GSH-HD157 95DU	95" Full Surface Geared Hinge	\$599.25
GSH-HD210 83AL	83" Full Surface Swing Clear Geared Hinge	\$470.25
GSH-HD210 83DU	83" Full Surface Swing Clear Geared Hinge	\$545.50
GSH-HD210 95AL	95" Full Surface Swing Clear Geared Hinge	\$516.75
GSH-HD210 95DU	95" Full Surface Swing Clear Geared Hinge	\$599.25

SECTION F CONTINUOUS HINGES



ACCESSORIES				
TEK SCREWS (per 100)				\$71.00
ADJUSTA SCREWS (per 100)				\$355.75
COVER CLIPS (per 100)				\$154.25
HINGE SHIMS 79 1/8" LONG				\$118.50
HINGE SHIMS 83 1/8" LONG				\$130.50
HINGE SHIMS 85 1/8" LONG				\$136.25
HINGE SHIMS 95 1/8" LONG				\$142.25
HINGE SHIMS 107 1/8" LONG				\$154.25
HINGE SHIMS 119 1/8" LONG				\$166.00
REPLACEMENT SNAP ON COVERS				
6'-8" TO 7'-2"				\$52.00
8'				\$56.75
10'				\$66.25
HINGE MODIFICATIONS:				
HOSPITAL TIP HINGES				\$77.00
CUSTOM HOLE PATTERN				\$85.25
DUTCH DOOR HINGE PREP.				\$59.25
SWAGGED HINGES				\$83.00
ELECTRONIC POWER TRANSFER (EPT) PREP (PLEASE ADVISE MODEL)				\$89.00
8 WIRE POWER TRANSFER HINGE				\$711.25
CUTTING CHARGES (per cut)				\$47.25
Note: #12 machine / wood screws are used on all hinges				
Opening FT-IN	6'-8"	7'	7'-2"	8'
Hinge Size (INS.)	79 1/8	83 1/8	85 1/8	95 1/8"

Double Acting Continuous Hinge

PART NUMBER	DESCRIPTION	LIST PRICE
CH-805	Double Acting Continuous Hinge up to 10' 32D only	\$1,175.75

Key Emergency Release

PART NUMBER	DESCRIPTION	LIST PRICE
CH-LL299	Keyed Emergency Release (KA) 32D only (Drawing Required)	\$570.25

FUNCTIONS			
04 STOREROOM		P.O.A.	
<ul style="list-style-type: none"> • Guard bolt deadlocks latch bolt. • Latch bolt retracted by lever inside or key outside. 			
05 OFFICE		P.O.A.	
<ul style="list-style-type: none"> • Guard bolt deadlocks latch bolt. • Latch bolt retracted by either lever unless outside lever is locked by toggle in lock front. • Key outside retracts latch bolt when outside lever is locked. 			
15 PASSAGE		P.O.A.	
<ul style="list-style-type: none"> • Latch bolt retracted by either lever. 			
37 CLASSROOM		P.O.A.	
<ul style="list-style-type: none"> • Guard bolt deadlocks latch bolt. • Latch bolt retracted by either lever unless outside lever is locked by key outside. • Key outside locks or unlocks outside lever. • Inside lever always operative. 			
OTHER FUNCTIONS AVAILABLE BY REQUEST			
PAIR OF DOORS		STRIKE PATCH MUST BE SPECIFIED SEPARATELY	
WL	STRIKE PATCH WITH LEVERS	<ul style="list-style-type: none"> • Rigid lever both sides of inactive door • Strike for locking door built in. 	P.O.A.
NL	STRIKE PATCH NO LEVERS	<ul style="list-style-type: none"> • No levers for inactive door. • Strike for locking door built in. 	P.O.A.
ES	STRIKE PATCH WITH ELECTRIC STRIKE	<ul style="list-style-type: none"> • Strike Patch complete with electric strike. 	P.O.A.
HOW TO ORDER		HOW TO ORDER	
SERIES	P200	SERIES	S100
Function	37	Function	5
Strike Patch	WL	Strike Patch	NOT APPLICABLE
Lever	J	Lever	B
Hand	RH	Hand	RH
Finish	C32D	Finish	C4
EXAMPLE: P237-WL-J-RH-C32D		EXAMPLE: S105-B-RH-C4	
HANDING		FINISHES	
LEFT HAND	LH	C3	POLISHED BRASS
RIGHT HAND	RH	C4	SATIN BRASS
LEFT HAND REVERSE BEVEL	LHRB	C10	SATIN BRONZE
RIGHT HAND REVERSE BEVEL	RHRB	C10B	OXIDIZED OIL RUBBED BRONZE
		C32	POLISHED STAINLESS STEEL
		C32D	SATIN STAINLESS STEEL
NOTE: P.O.A. (PRICE ON APPLICATION CONTACT OFFICE)		OTHER FINISHES AVAILABLE ON REQUEST	

SECTION I
PRISON HARDWARE



PRODUCT NUMBER	DESCRIPTION	LIST PRICE
GSH 918	Prison Hinge with the Shear Resisting Stud	\$114.25
GSH 919	Prison Hinge without the Shear Resisting Stud	\$101.50
GSH 920	Prison Door Pull	\$77.25
GSH 921	Prison Flush Pull	\$77.25



Your Partner In Success

676 Petrolia Road, Toronto , ON, Canada M3J 2V2

Tel: 416.667.9593 Fax: 416.667.0806 to ll Free: 1.800.267.1236

Email: info@galleryspecialty.com www.galleryspecialty.com

All Product specifications are subject to change. for the most updated Product features, Contact our Customer service department to ll free at 1(800) 267-1236