

Your Partner in Success



Gallery™

specialty hardware ltd.

Commercial Price Book 2024

Effective May 15, 2024



Section A - Misc. Door Hardware

| | | | | | |
|--|------|--|----|--|----|
| Table of Contents | 2-5 | GSH 218..... | 13 | GSH 307 Coat Hook (Double) | 15 |
| Terms and Conditions | 6-10 | GSH 218B/218S High Rise Floor Stop..... | 13 | GSH 307B Coat Hook (Single) | 15 |
| GSH 1 Ball Catch..... | 11 | GSH 231..... | 13 | GSH 308A Hat and Coat Hook Surface Mounting..... | 15 |
| GSH 2 Roller Catch..... | 11 | GSH 232..... | 13 | GSH 308B Hat and Coat Hook Concealed Mounting | 15 |
| GSH 9 Hinge Filler Plate..... | 11 | GSH 240 Wall Stop..... | 13 | GSH 308C Hat and Coat Hook | 15 |
| GSH 11 Door Guard..... | 11 | GSH 240B Wall Stop..... | 13 | GSH 309 Coat Hook (Double) | 15 |
| GSH 14 Flush Bolt 4"..... | 11 | GSH 250 Wall Stop..... | 13 | GSH 309A Coat Hook (Single) | 15 |
| GSH 15 Flush Bolt 6"..... | 11 | GSH 250B Wall Stop..... | 13 | GSH 310 Coat Hook (Double) | 15 |
| GSH 16 Window Lift | 11 | GSH 260 Square Wall Stop | 13 | GSH 310B Coat Hook (Single) | 15 |
| GSH 17 Modern Door Guard | 11 | GSH 270X Floor Stop Solid Brass..... | 13 | GSH 311 Hat and Coat Hook | 15 |
| GSH 18 Window Lock | 11 | GSH 270HX Floor Stop Solid Brass with Hold Open .. | 13 | GSH 317 Cabinet Pull ¾" D/A. 1 ¼" Long | 15 |
| GSH 19 Flush Pull | 11 | GSH 272 Floor Stop Solid Brass | 13 | GSH 340 Coat Hook..... | 15 |
| GSH 19SQ Flush Pull | 11 | GSH 272H Floor Stop Solid Brass with Hold Open .. | 13 | GSH 341 Coat Hook..... | 15 |
| GSH 20 Sliding Door Edge Pull | 11 | GSH 273 Floor Stop Solid Brass | 13 | GSH 342 Coat Hook..... | 15 |
| GSH 21 Elbow Catch | 11 | GSH 273H Floor Stop Solid Brass with Hold Open .. | 13 | GSH 343 Coat Hook (Double) | 16 |
| GSH 22 T-Strike Cut Out..... | 11 | GSH 275 Base Board Stop | 13 | GSH 343B Coat Hook (Single) | 16 |
| GSH 22 T-Strike Blank | 11 | GSH 280A Heavy Duty Floor Stop..... | 13 | GSH 344 Coat Hook..... | 16 |
| GSH 23 ANSI Blank Strike Short Lip..... | 11 | GSH 280AH Heavy Duty Floor Stop with Hold Open | 13 | GSH 345 Coat Hook..... | 16 |
| GSH 23 ANSI Blank Strike | 11 | GSH 280B Heavy Duty Floor Stop | 13 | GSH 401/401 UL Extension Flush Bolt | 16 |
| GSH 23 CFL ANSI Cut for Latch | 11 | GSH 280BH Heavy Duty Floor Stop with Hold Open | 13 | GSH 403 Adjustable Roller Latch | 16 |
| GSH 25/25A-1 Steel Astragal 1-½" Wide..... | 11 | GSH 281 Heavy Duty Floor Stop | 13 | GSH 404H Roller Latch..... | 16 |
| GSH 25/25A-2 Steel Astragal 2" Wide | 11 | GSH 281H Heavy Duty Floor Stop with Hold Open..... | 13 | GSH 404HS Roller Latch C/W Stainless Roller..... | 16 |
| GSH 26 Flush Bolt Blank..... | 11 | GSH 282 Heavy Duty Prison Stop..... | 13 | GSH 404SO Strike only..... | 16 |
| GSH 27 Mortise Lock Face..... | 11 | GSH 289A Door Holder-Solid Brass | 13 | GSH 405H Roller Latch C/W Strike..... | 16 |
| GSH 28 Blank Latch Front | 11 | GSH 289B Door Holder-Solid Brass | 13 | GSH 405HS Roller Latch C/W Stainless Roller..... | 16 |
| GSH 29 Blank Latch Front | 11 | GSH 291 3" Base Board Stop..... | 14 | GSH 405SO Strike only..... | 16 |
| GSH 70 T/B Surface Bolt C/W Top and Bottom Strike | 12 | GSH 299 Emergency Stop..... | 14 | GSH 406H Roller Latch C/W Strike | 16 |
| GSH 72 Dutch Bolt 8" | 12 | GSH 302A Wire Pull 5/16" DIA. 3 ½" C/C..... | 14 | GSH 406HS Roller Latch C/W Stainless Roller..... | 16 |
| GSH 72 Dutch Bolt 12" | 12 | GSH 302B Wire Pull 5/16" DIA. 4" C/C | 14 | GSH 406SO Strike only..... | 16 |
| GSH 72 Dutch Bolt 24" | 12 | GSH 302C Wire Pull 5/16" DIA. 5" C/C | 14 | GSH 407H Roller Latch C/W Strike..... | 16 |
| GSH 73 Solid Brass 3" Strapless Surface Bolt..... | 12 | GSH 320A Coat Hook | 14 | GSH 407HS Roller Latch C/W Stainless Roller..... | 16 |
| GSH 74 Solid Brass 4" Strapless Surface Bolt..... | 12 | GSH 305B Coat Hook | 14 | GSH 407SO Strike only..... | 16 |
| GSH 75 Solid Brass 5" Strapless Surface Bolt..... | 12 | GSH 320B Coat Hook | 14 | GSH 410 / 412 Dust Proof Strike and Plate | 16 |
| GSH 76 Solid Brass 6" Strapless Surface Bolt | 12 | GSH 358A Coat Hook Con. MTG. C/W with Bumper..... | 14 | GSH 413 Rabbeted Flush Bolt Adapter..... | 16 |
| GSH 131-2 Rod Flange 1 ¼" I.D..... | 12 | GSH 358B Coat Hook Concealed Mounting | 14 | GSH 414/415 Squash Court/Drop Ring Pull | 16 |
| GSH 137-2 Hang Rod 1 ¼" O.D. X .0049 Wall..... | 12 | GSH 358C Coat Hook Surface Mounting | 14 | GSH 430 Decorative Floor Stop "90 Degree"..... | 16 |
| GSH 199 Door Viewer 160 Degree..... | 12 | GSH 359 Coat Hook..... | 14 | GSH 450 Lavatory Latch..... | 16 |
| GSH 199B Door Viewer 180 Degree..... | 12 | GSH 360A Cabinet Pull 6" O/A 4" C/C ½" Diameter .. | 14 | GSH 935 Drawer Pull 3 1/2"..... | 16 |
| GSH 200/200B/200S Low Rise Door Stop | 12 | GSH 360B Cabinet Pull 8" O/A 6" C/C ½" Diameter .. | 14 | GSH 945 Drawer Pull 4 1/2"..... | 17 |
| GSH 201 ½" Riser | 12 | GSH 360C Cabinet Pull 12" O/A 6" C/C ½" Diameter .. | 14 | GSH 3030 Solid Brass Extruded Hinge 3" x 3"..... | 17 |
| GSH 209 High & Low Rise, Spring Loaded Stop..... | 12 | GSH 360D Cabinet Pull 24" O/A 22" C/C ½" Diameter .. | 14 | GSH 3535 Solid Brass Extruded Hinge 3.50" X 3.50"..... | 17 |
| GSH 210 Decorative Floor Stop "non-directional"..... | 12 | GSH 360E Cabinet Pull 48" O/A 46" C/C ½" Diameter .. | 14 | GSH 4040 Solid Brass Extruded Hinge 4" x 4"..... | 17 |
| GSH 211 Spring Loaded Floor Stop..... | 12 | GSH 390 Coat Hook Single Groove | 14 | GSH 4040 BB Solid Brass Hinge 4" x 4" Ball Bearing .. | 17 |
| GSH 212..... | 12 | GSH 391 Coat Hook Single Groove | 15 | GSH 4540 BB Solid Brass Hinge 4.50" x 4" Ball Bearing .. | 17 |
| | | GSH 392 Coat Hook Double Groove | 15 | GSH 4545 Solid Brass Extruded Hinge 4.50" x 4.50"..... | 17 |
| | | GSH 306B Coat Hook | 15 | GSH 4545 BB Solid Brass Hinge 4.50" x 4.50" BB | 17 |

TABLE OF CONTENTS

| | |
|--|-------|
| GSH 5050 BB Solid Brass Hinge 5" x 5" BB | 17 |
| Ball Tips (BF) | 17 |
| Steeple Tips (SF) | 17 |
| Acorn Tips (AKF) | 17 |
| Urn Tips (UF) | 17 |
| Sign #102 6" x 6" Picto Woman | 17 |
| Sign #103 6" x 6" Picto Man | 17 |
| Sign #104 6" x 6" Handicap Logo | 17 |
| Sign #105 6" x 6" x Picto Man / Woman | 17 |
| Sign #106 6" x 6" x Picto Man / Woman / Handicap | 17 |
| Sign #107 6" x 6" Picto Woman | 17 |
| Sign #108 6" x 6" Picto Man | 17 |
| Sign #109 6" x 6" Handicap Logo | 17 |
| Sign #110 6" x 6" x Picto Man / Woman | 17 |
| Sign #111 6" x 6" x Picto Man/Woman/Handicap | 17 |
| Sign #112 6" x 6" Picto Woman | 17 |
| Sign #113 6" x 6" Picto Man | 17 |
| Sign #114 6" x 6" Picto Handicap Logo | 14 |
| Sign #115 6" x 6" Picto Man/Woman | 17 |
| Sign #116 6" x 6" x Picto Man/Woman/Handicap | 17 |
| Engraving | 18 |
| Mounting | 18-19 |

Section B - Door Pulls

| | |
|---|----|
| GSH AF-7 Straight Pull | 20 |
| GSH AF-8 Offset Pull | 20 |
| GSH AF-14 Straight Pull | 20 |
| GSH AF-15 Straight Pull | 20 |
| GSH 105 Door Pull | 20 |
| GSH 106 Door Pull | 20 |
| GSH 111 Door Pull | 20 |
| GSH 119 Door Pull | 20 |
| GSH 160 Offset Ladder Pull | 20 |
| GSH 161 Offset Ladder Pull | 20 |
| GSH 162 Straight Ladder Pull | 20 |
| GSH 163 Straight Ladder Pull | 20 |
| GSH 164 Offset Ladder Pull | 20 |
| GSH 165 Offset Ladder Pull | 20 |
| GSH 166 Straight Ladder Pull | 20 |
| GSH 167 Straight Ladder Pull | 20 |
| GSH 168 "C" Shape Pull 8 1/2" C/C | 20 |
| GSH 169 "C" Shape Pull 12" C/C | 20 |
| GSH 170 "C" Shape Pull 14" C/C | 20 |
| GSH 171 "C" Shape Pull 9" C/C | 20 |
| GSH 173 "C" Shape Pull 6 1/2" C/C | 20 |
| GSH 174 "C" Shape Pull 5" C/C | 20 |
| GSH 181 Offset Pull 12" C/C | 20 |
| GSH 900 Cast Pull 7 1/2" O/A | 20 |
| GSH 936 Hospital Pull | 20 |
| GSH 950 Flush Pull | 20 |
| GSH 955 Flush Pull | 20 |
| GSH 960 Flush Pull | 20 |
| GSH 961 Flush Pull | 20 |
| GSH 980 Cylinder Pull 1 1/4" DIA Hole | 20 |
| GSH 980B Cylinder Pull 1 1/2" DIA Hole | 20 |
| GSH 981 Cylinder Pull 2 1/8" DIA Hole | 20 |
| GSH 1007 7"-1009 9"-1012 12" | 20 |
| GSH 1107 7"-1109 9"-1112 12" C/W 1 1/2" X 3" BP | 20 |

| | |
|--|----|
| GSH 1207 7"-1209 9"-1212 12" C/W 2" DIA BP | 21 |
| GSH 1207 7"-1209 9"-1212 12" C/W BP | 21 |
| GSH 1907 7"-1909 9"-1912 12" C/W BP | 21 |
| GSH 1180 - (1, 2) 12" C/C | 21 |
| GSH 1181 - (1, 2) 12" C/C C/W 2" DIA Roses | 21 |
| GSH 1182 - (1, 2) 12" C/C C/W Plate | 21 |
| GSH 1184 - (1, 2) 12" C/C C/W 1 1/4" Rosette | 21 |
| GSH 1185 - (1, 2) 12" C/C C/W Plate | 21 |
| GSH 4007 7"-4009 9"-4012 12" (1, 2) | 21 |
| GSH 4107 7"-4109 9"-4112 12" C/W 1-1/4 Washers | 21 |
| GSH 2200H Hospital Pull C/W Round Rose | 21 |
| GSH 2400F Hands Free Pull | 21 |
| GSH 2500F Hands Free Pull 2500H | 21 |
| GSH 2300H Hospital Pull C/W Square Back Plate | 21 |
| GSH 2616H 4X16-2620H 4X20 Hospital Push/ Pull | 21 |
| GSH 2633 4X16 Hospital Push/ Pull | 21 |
| GSH 2632 4X16 Hospital Push/ Pull | 21 |
| GSH 4207 7"-4209 9"-4212 12" C/W 2" Washers | 22 |
| GSH 4307 7"-4309 9"-4312 12" C/W Narrow Plate | 22 |
| GSH 4607 7"-4609 9"-4612 12" C/W Plate | 22 |
| GSH 4900 Hands Free Pull | 22 |
| GSH 5000 - Push Bar or Long Door Pull | 22 |
| GSH 6012 12" C/C Standard | 22 |

Section C - Grab Bars

| | |
|---|----|
| Anchoring Devices (Non-Standard)..... | 24 |
| C02-C07 Straight Grab Bar 12" - 48"..... | 23 |
| C08 90 Degree "L" Shape Grab Bar 16" X 32"..... | 23 |
| C09 90 Degree "L" Shape Grab Bar 16" X 32"..... | 23 |
| C10 90 Degree "L" Shape Grab Bar 16" X 24"..... | 23 |
| C11 90 Degree "L" Shape Grab Bar 16" X 24"..... | 23 |
| C12 90 Degree "L" Shape Grab Bar 23" X 40"..... | 23 |
| C12C 90 Degree "L" Shape Grab Bar C/W POST..... | 23 |
| C13 90 Degree "L" Shape Grab Bar..... | 23 |
| C14 Shower Rail 30" x 24" x 30"..... | 23 |
| C15 Shower Rail 30" x 24" x 30"..... | 23 |
| C16 Tub Rail 24" x 48"..... | 23 |
| C17 Tub Rail 30" x 30"..... | 23 |
| C18 Tub Rail 48" x 24" x 32"..... | 23 |
| C19 Tub Rail 48" x 24" x 32"..... | 23 |
| C19 Tub Rail 32" x 28" x 30"..... | 23 |
| C21 Tub Rail 32" x 28" x 30"..... | 23 |
| C22 Standing Tub Rail 34" x 14" x 32"..... | 23 |
| C23 Standing Tub Rail 34" x 14" x 32"..... | 23 |
| C24 Standing Tub Rail 32" x 28" x 30"..... | 23 |
| C25 Standing Tub Rail 32" x 28" x 30"..... | 23 |
| C26 – Horizontal Tub Rail with Outrigger..... | 23 |
| C27 Wall to Floor Rail 30" X 30"..... | 23 |
| C28 Straight Rail with Support 48"..... | 23 |
| C29 Straight Rail with Support 52"..... | 23 |
| C30 123 Degree "L" Shape Wall Rail 12" x 12"..... | 23 |
| C31 123 Degree "L" Shape Wall Rail 24" x 24"..... | 23 |
| C32 Double Rail Tapered 24" x 24" x 12"..... | 23 |
| C33 Side Rail with Outrigger 30" x 6" x 24"..... | 23 |
| C34 Side Rail with Outrigger 30" x 6" x 24"..... | 23 |
| C35A Swing Clear..... | 23 |
| C35AT Swing Clear with Toilet Paper Holder..... | 24 |
| C36 Double Rail Straight 18" x 24" x 12"..... | 24 |
| C37 Floor to Ceiling 8' - 0"..... | 24 |
| C38 Wall to Floor Rail C/W Outrigger 30" x 30"..... | 24 |
| C39 Wall to Floor Rail C/W Outrigger 30" x 30"..... | 24 |
| C40 97 Degree Wall Rail 9" x 32"..... | 24 |
| C41 97 Degree Wall Rail 9" x 32"..... | 24 |
| C42 Lift Up Grab Bar..... | 24 |
| BR-50 Back Rest Grab Bar 24" Exposed..... | 24 |
| BR-51 Back Rest Grab Bar 24" Concealed..... | 24 |

Section D - Flat Ware

| | |
|--|----|
| Kickplates..... | 25 |
| GSH 30N Overlapping Type 90°..... | 25 |
| GSH 31N Overlapping Type 93°..... | 25 |
| GSH 32N Overlapping Type Radius Edge..... | 25 |
| GSH 33N Overlapping Type 90°..... | 25 |
| GSH 34N Overlapping Type 93°..... | 25 |
| GSH 35N Mortise Type 90°..... | 25 |
| GSH 36N Mortise Type 93°..... | 25 |
| GSH 37N Mortise Type Radius Edge..... | 25 |
| GSH 38N Mortise Type 90°..... | 25 |
| GSH 39N Mortise Type 93°..... | 25 |
| GSH 40N Mortise Type Radius Edge..... | 25 |
| GSH 41N Butted Type 90°..... | 25 |
| GSH 42N Butted Type 93°..... | 25 |
| GSH 43N Butted Type Radius Edge..... | 25 |
| GSH 44N Butted Type 90°..... | 25 |
| GSH 45N Butted Type 93°..... | 25 |
| GSH 46N Butted Type Radius Edge..... | 25 |
| GSH J82 Corner Guard 90°..... | 25 |
| GSH J83 Corner Guard 90°..... | 25 |
| GSH 78 Clear Plastic..... | 25 |
| GSH 80 Kick Plate..... | 25 |
| GSH 81 Push Plate..... | 25 |
| GSH 81A - PH / GSH 81A-PL..... | 25 |
| GSH 82 Push Plate..... | 25 |
| GSH 83 1/2 Round Push Plate..... | 25 |
| GSH 84 Radius Corner Push Plate..... | 25 |
| GSH 85N Decorative Push Plate 3 1/2..... | 25 |
| GSH 90F ARMOR Plates ULC Rated 20ga..... | 25 |
| GSH 47N Edge Guard 93° ULC Rated 20ga..... | 25 |
| GSH 48N Edge Guard 93° ULC Rated 20ga..... | 25 |
| GSH 50N Frame Wrap ULC Rated 20ga..... | 26 |
| Screws & Tape..... | 26 |

Section E - Guard Bars & Guide Rails

| | |
|--|----|
| GSH 800 Guard Bar ½" X 1-½" FB C/W 1-½" X 3" BP..... | 27 |
| GSH 801X Guard Bar ½" X 1-½" Flat Bar..... | 27 |
| GSH 802N Guard Bar ½" X 1-½"..... | 27 |
| GSH 802X Guard Bar ½" X 1-½" Flat Bar..... | 27 |
| GSH 803N Guard Bar ½" X 1-½"..... | 27 |
| GSH 804N Guard Bar ½" X 1-½"..... | 27 |
| GSH 815 Guard Bar ½" X 1-½" Single Flat Bar..... | 27 |
| GSH 837 Guard Bar ½" X 1-½"..... | 27 |
| GSH 837D Guard Bar..... | 27 |
| GSH FGR-601 Guide Rails..... | 27 |
| GSH FGR-602 Guide Rails..... | 27 |
| GSH FGR-603 Guide Rails..... | 27 |
| GSH FGR-604 Guide Rails..... | 27 |
| GSH FBB-651 Buggy Bumper..... | 27 |
| GSH FBB-652 Buggy Bumper..... | 27 |
| GSH FBB-653 Buggy Bumper..... | 27 |
| GSH 816 Guard Bar ½" X 1-½"..... | 28 |
| GSH 821 Guard Bar ½" X 1-½"..... | 28 |
| GSH 822 Guard Bar ½" X 1-½"..... | 28 |
| GSH 851 Guard Bar ½" X 1-½"..... | 28 |
| GSH 851D Guard Bar ½" X 1-½"..... | 28 |
| GSH 852X Guard Bar ½" X 1-½" Single Bar..... | 28 |
| GSH 855 Bumper Bar ½" X 1-½"..... | 28 |
| GSH 855D Guard Bar ½" X 1-½"..... | 28 |
| GSH 856X Guard Bar ½" X 1-½" Single Bar..... | 28 |
| GSH GR#1 Guide Rail 42" X 34" O/A..... | 28 |
| GSH GR#1F Guide Rail 42" X 30" O/A..... | 28 |
| GSH GR#2 Guide Rail 30" X 34" O/A..... | 28 |
| GSH GR#2F Guide Rail 30" X 30" O/A..... | 28 |
| GSH GR#3 Guide Rail 42" X 34" O/A..... | 28 |
| GSH GR#3F Guide Rail 42" X 30" O/A..... | 28 |
| GSH GR#4 Guide Rail 30" X 34" O/A..... | 28 |
| GSH GR#4F Guide Rail 30" X 30" O/A..... | 28 |
| GSH GR#5 Guide Rail 42" X 34" O/A..... | 28 |
| GSH GR#5F Guide Rail Plate 42" X 30" O/A..... | 28 |
| GSH GR#6 Guide Rail 30" X 34" O/A..... | 28 |
| GSH GR#6F Guide Rail 30" X 30" O/A..... | 28 |
| GSH GR#9 Guide Rail 34" High..... | 28 |
| GSH GR#9F Guide Rail 30" High..... | 28 |
| GSH GR#10 Guide Rail 42" X 34"..... | 28 |
| GSH GR#10F Guide Rail 42" 30"..... | 28 |

TABLE OF CONTENTS



Section F - Continuous Hinges

| | |
|---|----|
| CH931 Full Mortise | 29 |
| CH941 Full Mortise | 29 |
| CH943 Half Wrap Edge Guard | 29 |
| CH944 Half Mortise | 29 |
| CH945 Half Mortise C/W Guard | 29 |
| CH946 Swing Clear | 29 |
| CH947 Full Surface | 29 |
| CH951 Full Mortise and HD | 29 |
| CH952 Full Wrap Edge Guard/Mount and HD | 30 |
| CH952E Ext. Full Wrap Edge Guard/Mount | 30 |
| CH953 Half Wrap Edge Guard/Mount and HD | 30 |
| CH954 Half Mortise | 30 |
| CH955 Half Mortise with Guard | 30 |
| CH956 Swing Clear | 30 |
| CH957 Full Surface | 30 |
| Accessories | 31 |

Section H - Mortise Patch Locks

| | |
|-----------------------------------|----|
| GSH 04 Storeroom Patch Lock | 32 |
| GSH 05 Office Patch Lock | 32 |
| GSH 15 Passage Patch Lock | 32 |
| GSH 37 Classroom Patch Lock | 32 |
| Electrified Strike Patch ES | 32 |
| How to Order | 32 |

Section I - Prison Hardware

| | |
|----------------------------|----|
| GSH 918 Butt Hinge | 33 |
| GSH 919 Butt Hinge | 33 |
| GSH 920 Surface Pull | 33 |
| GSH 921 Flush Pull | 33 |

ACCEPTANCE

ASSA ABLOY Door Security Solutions Canada, a division of ASSA ABLOY Canada Ltd. and all of its current and future associated companies, subsidiaries and operating brands reserve the right to decline an order, in whole or in part, when the type or quantity of goods or credit worthiness of the Purchaser is not satisfactory to us in our sole and absolute discretion.

The terms and conditions contained herein constitute the entire agreement between the parties.

Purchase Orders, Quotations ("Quote") requests, Acknowledgements or the like issued by the Purchaser that have contrary standard terms and conditions are not binding on ASSA ABLOY Door Security Solutions Canada, unless such terms and conditions are approved in a separate written agreement by ASSA ABLOY Door Security Solutions Canada's authorized representatives. In the event of an acceptance of Purchaser's Purchase Order by ASSA ABLOY Door Security Solutions Canada, the Purchaser agrees that such acceptance is solely conditioned on Purchaser's acceptance of the terms and conditions set forth in this instrument, regardless of the terms and conditions specified in the Purchaser's Purchase order.

The terms and conditions in Purchaser's Purchase Order which conflict with terms and conditions of this instrument shall be disregarded and are hereby rejected, and this instrument shall constitute the entire agreement between ASSA ABLOY Door Security Solutions Canada and the Purchaser. In the event that ASSA ABLOY Door Security Solutions Canada does not enforce or require strict performance of any term or condition hereof, or of any other document, instrument or other agreement relating to goods sold, such lack of enforcement or requirement of strict performance will not waive, affect or diminish any right of ASSA ABLOY Door Security Solutions Canada to enforce or require strict performance of such term or condition in the future.

PRICES

All prices are subject to change without notice and are not guaranteed. All shipments will be made at prices in effect at the time of order acceptance. Possession of this price list does not constitute an agreement to sell. Acknowledgements, invoices and quotations are on an "Errors and Omissions Excepted" basis (commonly referred to as E.O.E.). We reserve the right to correct clerical, stenographic and other obvious errors at any time.

AGREED PAYMENTS AND TERMS

Net 30 days. A 2% discount is offered if payment is made within 10 days. Unpaid accounts going beyond 45 days from date of invoice will be subject, without notice, to cessation of shipments, except on a C.O.D. basis. Late charge of 1.50% per month on past due invoices. Credit Card payments subject to 2.4% surcharge, American Express Credit Card not accepted.

MINIMUM INVOICE

Minimum invoice is \$50.00 net product value. Any orders not totalling these minimums will be invoiced at the minimums. All orders are subject to a \$50.00 minimum charge.

QUOTATIONS

If ASSA ABLOY Door Security Solutions Canada elects to offer a quote, such quote will be valid until the expiration date on that quote. Complete shipment of the order must be accepted by Purchaser within standard lead times. The QUOTE number must be referenced on the order. Any invoiced order that has the incorrect discount applied to it and did not have the QUOTE number written on the order will have a service fee of \$100.00 net DEDUCTED from any sales credit issued for the difference in discount.

The quote is null and void if the Purchase Order does not include ALL product lines listed on the Quote or if the quantities for an item covered by the Quote deviate by 10% or more. The Purchaser will have to solicit a new quotation. With the issuance and acceptance of a QUOTE for the purchase of products, the Purchaser agrees that products so purchased will not be resold or transferred to any Distributor not authorized by ASSA ABLOY Door Security Solutions Canada to sell its products. This would be inclusive of branches of the quoted Distributor. Failure to abide by this restriction may result in the Distributor's ineligibility for Quotes, or other actions in ASSA ABLOY Door Security Solutions Canada's discretion.

ASSA ABLOY Door Security Solutions Canada and its sales representatives reserve the right, in their sole discretion and for any reason, to refuse a Distributor's request to quote a price other than ASSA ABLOY Door Security Solutions Canada's standard list price and regardless of whether ASSA ABLOY Door Security Solutions Canada or its sales representatives have previously quoted discounted prices to the Distributor on some or all of its orders.

SPECIAL ORDERS

Products not catalogued or listed in this price book will be considered as special products and will not be manufactured without prior approval from ASSA ABLOY Door Security Solutions Canada. Special products require special handling, and therefore standard lead times may not apply. Please consult with your Sales Representative for further details.

CHANGES / CANCELLATION OF ORDERS

Cancellation of orders specifying standard stock merchandise will be accepted only if made in writing and received at least one week prior to scheduled ship date. Special or custom orders for non-stock merchandise may not be cancelled after order is acknowledged.

All change requests for stock goods must be submitted in writing to Customer Service within two (2) business days of receipt of confirmation of the order. In those instances where a cancellation is accepted, ASSA ABLOY Door Security Solutions Canada reserves the right to make a reasonable cancellation charge based on expenses incurred.

DELIVERY

Orders will be acknowledged and given a scheduled delivery date based on estimated manufacturing lead times. Complete information is required to process all orders. Orders with insufficient information for processing (i.e. keying information, door sizes, etc.) may be subject to extended lead times which are relative to the time required in obtaining the necessary information for order processing. Manufacturing lead time will begin once all information is received to process an order. ASSA ABLOY Door Security Solutions Canada will use reasonable efforts to deliver products as estimated but makes no guarantee as to delivery dates.

ASSA ABLOY Door Security Solutions Canada will not be liable for back charges incurred based on availability of product or as a result of delays in delivery caused by insufficient information required to process an order.

ASSA ABLOY Door Security Solutions Canada will not be held responsible for delays in delivery caused by strikes, fires, floods or any other causes beyond our control, including the delivery of material to us. Under no circumstances shall ASSA ABLOY Door Security Solutions Canada be liable or accountable for consequential damages due to failure of delivery. Unless your order specifies otherwise, partial shipments will be made on or after the scheduled delivery date.

TERMS OF SHIPMENT

All products are shipped Free on Board (FOB) the factory or the distribution centre unless otherwise agreed to in writing from ASSA ABLOY Door Security Solutions Canada. Title to and risk of loss product shipped is the responsibility of the purchaser and delivery is deemed to be complete upon transfer of the product to a common carrier. Carriers carry limited insurance. If the customer requires additional insurance coverage, please contact our customer service department.

All claims for shortages and damage are the responsibility of the purchaser. ASSA ABLOY Door Security Solutions Canada will assist the Purchaser with documentation necessary to make a claim if requested to do so by the purchaser. ASSA ABLOY Door Security Solutions Canada will ship via the best possible carrier. Shipments at the customer's request will be prepaid and any up-charge (actual cost less the amount negotiated by ASSA ABLOY Door Security Solutions Canada) will be added to the invoice.

The customer shall be responsible for payment of all applicable sales and / or taxes and shipping and handling costs. Shipments are subject to a fuel surcharge of \$25.00. All acknowledged sales orders equal to or greater than \$2,000 (pretax per order unless it is consolidated) will not be charged a shipping and handling fee.

CLAIMS

In the event of ASSA ABLOY Door Security Solutions Canada or Customer error, claims for shortages, pricing errors and/ or incorrectly filled orders must be submitted in writing to Customer Service within thirty (30) days from receipt of material.

Any claims for shortages or damage by the Carrier must be made by the Customer directly to the Carrier.

Limited Carrier insurance is typically offered for all orders. If the Customer requires additional insurance, please contact an ASSA ABLOY Door Security Solutions Canada Customer Service Representative upon submittal of the order. ASSA ABLOY Door Security Solutions Canada will obtain requested insurance and the additional cost will be included on Customer's invoice.

INVOICE DEDUCTION

An ASSA ABLOY Door Security Solutions Canada Sales Representative or Customer Service Representative must be notified of any disputed invoices within thirty (30) days from the date of invoice. Deductions should only be taken for the disputed amount and the balance of the invoice is due and payable within standard payment terms.

RETURN GOODS

No Material is to be returned to our facilities without prior written approval from customer service. It is the policy of ASSA ABLOY Door Security Solutions Canada to not accept returns of any materials that are correctly furnished as per the Distributor's Purchase Order. All such product must be returned in its original unmarked carton. The goods must have been shipped and invoiced in the previous sixty (60) days. Returns will be at the distributor's expense. The goods returned will be subject to inspection and a minimum 20% restocking fee will be applied to compensate for the cost of inspection, repacking and handling.

Return of product due to customer order error or accommodation must be prearranged with ASSA ABLOY Door Security Solutions Canada and approved in writing by Sales Management. A minimal restocking fee of 50% will be charged. RGA procedure should be followed and will be completed upon receipt and verification by ASSA ABLOY Door Security Solutions Canada that the returned merchandise is in saleable condition and that the material can be returned to the original manufacturer.

Defective goods that are out of warranty period will not be accepted for return. Products that are master-keyed, special orders, key bitted will not be accepted under any circumstances, unless the product is determined to be defective.

TAXES

Prices do not include any present or future Federal, Province, or Local property, license, privilege, sales, use, excise, gross receipts or other like taxes or assessments, which may result from transactions, or any services performed in connection herewith.

GOVERNING LAW

The rights and obligations of the parties shall be governed by the laws of the Province of Ontario, excluding any conflicts of law provisions. The United Nations Convention on Contracts for the International Sale of Goods shall not apply to this Agreement.

INDEMNITY

Purchaser shall indemnify ASSA ABLOY Door Security Solutions Canada and hold ASSA ABLOY Door Security Solutions Canada harmless against all claims, liability, loss or other damages (including costs, legal or otherwise incurred by ASSA ABLOY Door Security Solutions Canada) to all persons for injury of any nature, including sickness and/ or death, property damage at the time of delivery or after when the product is no longer in ASSA ABLOY Door Security Solutions Canada possession or control.

FORCE MAJEUR

ASSA ABLOY Door Security Solutions Canada shall not be liable for its failure to perform due to any contingencies beyond its control, including but not limited to acts of God, fires floods, wars, sabotage, accidents, labour disputes, shortages, government laws, ordinances, rules and regulations. ASSA ABLOY Door Security Solutions Canada shall not be liable for its failure to deliver due to its inability to obtain materials, equipment failure, labour actions, transportation issues or any similar contingencies.

In the event of delays due to the aforementioned contingencies, the date of delivery will be postponed by such length of time as the circumstances dictate.

COPYRIGHTS AND PATENTS

All products in ASSA ABLOY Door Security Solutions Canada catalogues, brochures and price lists are either patented, Copyrighted, or registered by ASSA ABLOY Door Security Solutions Canada.

BACK CHARGES

ASSA ABLOY Door Security Solutions Canada is not responsible for, does not authorize, and will not accept charges for the cost of labour, or material incurred by anyone for installation, repair, service, or replacement of any product of unless specifically authorized by a Senior officer of the company.

GUARANTEE

We guarantee our products against fault in workmanship and material. Claims for defects must be made immediately upon receipt of goods. Products sold with lacquered finish (C3, C4, C5, C9, C10, C19 and C20) are not guaranteed against scratching or chipping, after installation on job site. The materials we use for lacquered finishes are the best available, however, we cannot guarantee against deterioration due to wear or environmental. US10B is a living finish and will patina over time. Limited warranty on all Powder Coated materials.

LIMITED WARRANTY

ASSA ABLOY Door Security Solutions Canada warrants that its products sold under the Gallery Specialty Hardware trade name in North America are free from defects in workmanship and materials under normal use and service for a period of 1 year.

This warranty does not cover defects or damage arising from improper installation, lack of or improper maintenance, improper storage, shipping and handling, corrosion, erosion, ordinary wear and tear, misuse, abuse, accident, unauthorized service, or use with unauthorized non-Gallery Specialty Hardware products or parts.

This warranty is void if any modification is made to the warranted product, regardless of whether the modification causes or contributes to the alleged defect. All modifications are made fully at the risk of the party making the modification.

The only liability of Gallery Specialty Hardware in tort or contract whether under this warranty or otherwise, shall be limited to the repair or replacement of any product or component part which shall proves defective as covered by this warranty, within the stated time Period stated Above, after delivery to the original purchaser.

SECTION A

MISCELLANEOUS DOOR HARDWARE



| PRODUCT NUMBER | DESCRIPTION | FINISH | LIST PRICE |
|----------------|--|--|------------|
| GSH 1 | Ball Catch | C3, C26D | \$15.62 |
| GSH 1 | Ball Catch | C26, C15, C15A, C5, C10B, C19 | \$19.26 |
| GSH 2 | Roller Catch | C3, C26D | \$14.98 |
| GSH 2 | Roller Catch | C26, C15A, C5, C10B | \$16.80 |
| GSH 9 | Hinge Filler Plate | CP | \$9.63 |
| GSH 11 | Door Guard | 26D | \$24.08 |
| GSH 14 | Flush Bolt 4" | C3, C26D | \$28.89 |
| GSH 14 | Flush Bolt 4" | C26, C15, C15A, C5, C10B, C19 | \$33.06 |
| GSH 15 | Flush Bolt 6" | C3, C26D | \$39.06 |
| GSH 15 | Flush Bolt 6" | C26, C15, C15A, C5, C10B | \$45.05 |
| GSH 16 | Window Lifts | C3, C26D | \$12.63 |
| GSH 16 | Window Lifts | C26, C15A, C5, C10B | \$14.45 |
| GSH 17 | Modern Door Guard | C3, C10B, C19, C26, C26D | \$27.93 |
| GSH 18 | Window Lock | C3, C26D | \$24.61 |
| GSH 18 | Window Lock | C26, C15A, C5, C10B | \$28.25 |
| GSH 19 | Flush Pull | C3, C26D | \$30.07 |
| GSH 19 | Flush Pull | C26, C15, C15A, C5, C10B, C10, C32D, C19 | \$34.88 |
| GSH 19SQ | Flush Pull | C19, C32D | \$32.64 |
| GSH 20 | Sliding Door Edge Pull | C3, C26D, C4 | \$21.08 |
| GSH 20 | Sliding Door Edge Pull | C26, C15, C15A, C5, C10B, C19 | \$24.08 |
| GSH 21 | Elbow Catch | C3, C26D | \$7.81 |
| GSH 21 | Elbow Catch | C26, C15, C15A, C5, C10B | \$8.99 |
| GSH 22 | T-Strike Cut Out | CP | \$3.64 |
| GSH 22 | T-Strike Cut Out | C26D | \$4.17 |
| GSH 22 | T-Strike Blank | CP | \$3.64 |
| GSH 22 | T-Strike Blank | C26D | \$4.17 |
| GSH 23 | ANSI Blank Strike Short Lip | CP | \$5.99 |
| GSH 23 | ANSI Blank Strike Short Lip | C26D | \$6.63 |
| GSH 23 | ANSI Blank Strike | CP | \$5.46 |
| GSH 23 | ANSI Blank Strike | C26D | \$5.99 |
| GSH 23 CFL | ANSI Cut For Latch | CP | \$8.99 |
| GSH 23 CFL | ANSI Cut For Latch | C26D | \$14.45 |
| GSH 25-1 | Steel Astragal 1-1/2" (Price Per Foot) | CP | \$18.62 |
| GSH 25-2 | Steel Astragal 2" (Price Per Foot) | CP | \$20.44 |
| GSH 25A-1 | Stainless Steel Astragal 1-1/2" (Price Per Foot) | C32D | \$27.07 |
| GSH 25A-2 | Stainless Steel Astragal 2" (Price Per Foot) | C32D | \$29.43 |
| GSH 26 | Standardized Blank | CP | \$7.17 |
| GSH 27 | Standardized Blank | CP | \$7.17 |
| GSH 28 | Blank Latch Front | CP | \$7.17 |
| GSH 29 | Blank Latch Front | CP | \$7.17 |

SECTION A

MISCELLANEOUS DOOR HARDWARE

| PRODUCT NUMBER | DESCRIPTION | FINISH | LIST PRICE |
|----------------|--|-------------------------|------------|
| GSH 70 T/B | Surface Bolt C/W Top or Bottom Striker | C26D, C32D, C19 | \$66.77 |
| GSH 70 T/B UL | Surface Bolt C/W Top or Bottom Striker | C26D | \$72.76 |
| GSH 72 | Dutch Bolt 8" | C3, C26 | \$89.56 |
| GHS 72 | Dutch Bolt 8" | C4, C26D | \$107.64 |
| GSH 72 | Dutch Bolt 12" | C3, C26 | \$112.99 |
| GSH 72 | Dutch Bolt 12" | C4, C26D | \$131.08 |
| GSH 72 | Dutch Bolt 24" | C3, C26 | \$225.98 |
| GSH 72 | Dutch Bolt 24" | C4, C26D | \$246.42 |
| GSH 73 | Solid Brass 3" | C3, C4, C26, C26D | \$18.62 |
| GSH 73 | Solid Brass 3" | C10 | \$19.26 |
| GSH 73 | Solid Brass 3" | C10B | \$21.08 |
| GSH 74 | Solid Brass 4" | C3, C4, C26, C26D | \$21.08 |
| GSH 74 | Solid Brass 4" | C10 | \$22.79 |
| GSH 74 | Solid Brass 4" | C10B | \$24.08 |
| GSH 75 | Solid Brass 5" | C3, C4, C26, C26D | \$24.08 |
| GSH 75 | Solid Brass 5" | C10 | \$24.61 |
| GSH 75 | Solid Brass 5" | C10B | \$26.43 |
| GSH 76 | Solid Brass 6" | C3, C4, C26, C26D | \$26.43 |
| GSH 76 | Solid Brass 6" | C10 | \$27.61 |
| GSH 76 | Solid Brass 6" | C10B | \$28.89 |
| GSH 131-2 | Rod Flange 1 1/4" I.D. | C26 | \$7.81 |
| GSH 137-2 | Hang Rod 1 1/4" O.D. x .049" Wall per foot | C26 | \$13.80 |
| GSH 199 | Doorviewer 160° 90min | C26D | \$13.38 |
| GSH 199 | Doorviewer 160° 90min | C19 | \$15.41 |
| GSH 199B | Doorviewer 180° 90min | C26D | \$18.73 |
| GSH 199B | Doorviewer 180° 90min | C19, C26 | \$21.40 |
| GSH 200 | Dome Door Stop | C3, C10, C26 | \$8.45 |
| GSH 200 | Dome Door Stop | C4 | \$8.45 |
| GSH 200 | Dome Door Stop | C10B | \$8.45 |
| GSH 200 | Dome Door Stop | C26D | \$7.17 |
| GSH 200S | Dome Door Stop | C32D | \$80.57 |
| GSH 200B | Dome Door Stop | C3, C4, C10, C26, C26D | \$10.27 |
| GSH 200B | Dome Door Stop | C10B, C19 | \$10.81 |
| GSH 201 | 1/2" Riser | C3, C26D | \$7.17 |
| GSH 209 | High & Low Rise, Spring Loaded Stop | C3, C4, C26, C26D, C10B | \$8.45 |
| GSH 209 | High & Low Rise, Spring Loaded Stop | C19 | \$8.99 |
| GSH 209 | High & Low Rise, Spring Loaded Stop | C32D | \$16.00 |
| GSH 210 | Decorative floor stop "non-directional" | C26, C3, C15 | \$31.24 |
| GSH 211 | Spring Loaded Floor Stop | C32D | \$95.02 |
| GSH 212 | Square Door Stop | C19 | \$32.64 |
| GSH 212 | Square Door Stop | C15 | \$26.30 |

SECTION A

MISCELLANEOUS DOOR HARDWARE



| PRODUCT NUMBER | DESCRIPTION | FINISH | LIST PRICE |
|----------------|---------------------------|-------------------------|------------|
| GSH 218 | Dome Door Stop | C3,C4,C10,C26 | \$9.63 |
| GSH 218 | Dome Door Stop | C10B,C19 | \$9.63 |
| GSH 218 | Dome Door Stop | C26D | \$7.81 |
| GSH 218B | Dome Door Stop | C3, C4, C10, C26, C26D | \$10.81 |
| GSH 218B | Dome Door Stop | C10B | \$10.81 |
| GSH 218S | Dome Door Stop | C32D | \$89.56 |
| GSH 231 | Wall Stop | C15, C19 | \$17.12 |
| GSH 232 | Wall Stop | C15, C19 | \$17.12 |
| GSH 240 | Wall Stop | C3, C4, C10, C10B, C26D | \$11.98 |
| GSH 240 | Wall Stop | C32D | \$10.81 |
| GSH 240B | Wall Stop | C3, C4, C10, C10B | \$18.62 |
| GSH 250 | Wall Stop | C3, C4,C10, C10B, C26D | \$11.98 |
| GSH 250 | Wall Stop | C32D | \$10.81 |
| GSH 250B | Wall Stop | C3,C4,C10,C10B | \$18.62 |
| GSH 260 | Square Wall Stop | C15, C19 | \$30.39 |
| GSH 270 X | Floor Stop Solid Brass | C3,C4,C10,C26,C26D | \$33.06 |
| GSH 270 X | Floor Stop Solid Brass | C10B | \$34.88 |
| GSH 270HOLD HX | Add To Above Prices | | \$34.88 |
| GSH 272 | Floor Stop Solid Brass | C3,C4,C10,C10B,C26,C26D | \$35.42 |
| GSH 272HOLD | Add To Above Price | | \$33.17 |
| GSH 273 | Floor Stop Solid Brass | C3,C4,C10,C10B,C26,C26D | \$37.24 |
| GSH 273HOLD | Add To Above Price | | \$33.17 |
| GSH 275 | Baseboard Stop | C15, C19 | \$24.72 |
| GSH 280A | Heavy Duty Floor Stop | C3 | \$169.49 |
| GSH 280A | Heavy Duty Floor Stop | C4,C10 | \$113.63 |
| GSH 280A | Heavy Duty Floor Stop | C10B,C26D | \$118.98 |
| GSH 280A | Heavy Duty Floor Stop | C26 | \$169.49 |
| GSH 280AHOLD | Add To Above Price | | \$34.88 |
| GSH 280B | Heavy Duty Floor Stop | C3 | \$167.13 |
| GSH 280B | Heavy Duty Floor Stop | C4, C10 | \$111.82 |
| GSH 280B | Heavy Duty Floor Stop | C10B, c28 | \$116.63 |
| GSH 280B | Heavy Duty Floor Stop | C26D | \$174.30 |
| GSH 280BHOLD | Add To Above Price | | \$34.88 |
| GSH 281 | Heavy Duty Floor Stop | C3,C4,C10,C10B,C26D,C19 | \$39.06 |
| GSH 281 | Heavy Duty Floor Stop | C28 | \$33.71 |
| GSH 281HOLD | Add To Above Price | | \$34.88 |
| GSH 282 | Heavy Duty Prison Stop | Black | \$46.87 |
| GSH 289A | Door Holder Zinc Die Cast | C26D | \$23.01 |
| GSH 289B | Door Holder-Solid Brass | C3,C4,C10,C10B,C26D,C19 | \$40.23 |

SECTION A

MISCELLANEOUS DOOR HARDWARE

| PRODUCT NUMBER | DESCRIPTION | FINISH | LIST PRICE |
|----------------|---------------------------------------|-------------------------|------------|
| GSH 291 | 3" Base Board Stop | C3 | \$14.45 |
| GSH 291 | 3" Base Board Stop | C26D,C10B, C19 | \$20.44 |
| GSH 299 | Emergency Stop | C26D | \$192.39 |
| GSH 302A | Wire Pull 5/16" DIA. 3 1/2" CTC | C3,C4,C10,C10B,C26,C26D | \$8.99 |
| GSH 302A | Wire Pull 5/16" DIA. 3 1/2" CTC | C28 | \$8.45 |
| GSH 302A | Wire Pull 5/16" DIA. 3 1/2" CTC | C32D | \$11.45 |
| GSH 302B | Wire Pull 5/16" DIA. 4" CTC | C3,C4,C10,C10B,C26,C26D | \$8.99 |
| GSH 302B | Wire Pull 5/16" DIA. 4" CTC | C28 | \$8.45 |
| GSH 302B | Wire Pull 5/16" DIA. 4" CTC | C32D | \$11.45 |
| GSH 302C | Wire Pull 5/16" DIA. 5" CTC | C3,C4,C10,C26,C26D | \$11.45 |
| GSH 302C | Wire Pull 5/16" DIA. 5" CTC | C10B | \$11.98 |
| GSH 302C | Wire Pull 5/16" DIA. 5" CTC | C28 | \$10.81 |
| GSH 302C | Wire Pull 5/16" DIA. 5" CTC | C32D | \$14.45 |
| GSH 305B | Coat Hook | C32D | \$14.02 |
| GSH 320A | Coat Hook | C32D | \$31.14 |
| GSH 320A | Coat Hook | C32 | \$39.48 |
| GSH 320B | Coat Hook | C32D | \$24.29 |
| GSH 320B | Coat Hook | C32 | \$30.50 |
| GSH 358A | Coat Hook | C3 | \$139.42 |
| GSH 358A | Coat Hook | C4 | \$93.20 |
| GSH 358A | Coat Hook | C26 | \$153.87 |
| GSH 358A | Coat Hook | C26D | \$102.19 |
| GSH 358B | Coat Hook | C3 | \$126.26 |
| GSH 358B | Coat Hook | C4 | \$84.10 |
| GSH 358B | Coat Hook | C26 | \$144.24 |
| GSH 358B | Coat Hook | C26D | \$97.37 |
| GSH 358C | Coat Hook | C3 | \$78.75 |
| GSH 358C | Coat Hook | C4 | \$52.32 |
| GSH 358C | Coat Hook | C26 | \$93.73 |
| GSH 358C | Coat Hook | C26D | \$62.49 |
| GSH 359 | Coat Hook | C26D | \$22.79 |
| GSH 360A | Cabinet Pull 1/2"OD X 6"OA X 4" CTC | C32D | \$20.22 |
| GSH 360B | Cabinet Pull 1/2"OD X 8"OA X 6" CTC | C32D | \$29.53 |
| GSH 360C | Cabinet Pull 1/2"OD X 12"OA X 10" CTC | C32D | \$41.73 |
| GSH 360D | Cabinet Pull 1/2"OD X 24"OA X 22" CTC | C32D | \$79.39 |
| GSH 360E | Cabinet Pull 1/2"OD X 48"OA X 23" CTC | C32D | \$138.24 |
| GSH 390 | Coat Hook | C3 | \$47.51 |
| GSH 390 | Coat Hook | C4 | \$31.24 |
| GSH 390 | Coat Hook | C26 | \$51.68 |
| GSH 390 | Coat Hook | C26D | \$34.88 |

SECTION A

MISCELLANEOUS DOOR HARDWARE



| PRODUCT NUMBER | DESCRIPTION | FINISH | LIST PRICE |
|----------------|------------------------------------|-------------------------|------------|
| GSH 391 | Coat Hook | C3 | \$56.50 |
| GSH 391 | Coat Hook | C4 | \$34.88 |
| GSH 391 | Coat Hook | C26 | \$61.31 |
| GSH 391 | Coat Hook | C26D | \$40.87 |
| GSH 392 | Coat Hook | C3 | \$67.95 |
| GSH 392 | Coat Hook | C4 | \$45.69 |
| GSH 392 | Coat Hook | C26 | \$73.30 |
| GSH 392 | Coat Hook | C26D | \$49.33 |
| GSH 306 B | Coat Hook | C10,C10B,C26D | \$97.37 |
| GSH 307 | Coat Hook | C3,C4,C10,C10B,C26D | \$33.71 |
| GSH 307 | Coat Hook | C19 | \$35.95 |
| GSH 307B | Coat Hook | C3,C4,C10,C10B,C26D | \$33.71 |
| GSH 307B | Coat Hook | C19 | \$35.95 |
| GSH 308A | Hat and Coat Hook | C3 | \$78.11 |
| GSH 308A | Hat and Coat Hook | C4 | \$52.32 |
| GSH 308A | Hat and Coat Hook | C10 | \$63.67 |
| GSH 308A | Hat and Coat Hook | C10B | \$68.48 |
| GSH 308A | Hat and Coat Hook | C26 | \$102.19 |
| GSH 308A | Hat and Coat Hook | C26D | \$68.48 |
| GSH 308B | Hat and Coat Hook | C3, C4, C26, C10B, C26D | \$61.30 |
| GSH 308B | Hat and Coat Hook | C19 | \$95.12 |
| GSH 308C | Hat and Coat Hook | C3 | \$73.30 |
| GSH 308C | Hat and Coat Hook | C4 | \$49.33 |
| GSH 308C | Hat and Coat Hook | C10 | \$58.96 |
| GSH 308C | Hat and Coat Hook | C10B | \$72.12 |
| GSH 308C | Hat and Coat Hook | C26 | \$105.82 |
| GSH 308C | Hat and Coat Hook | C26D | \$70.94 |
| GSH 309 | Coat Hook | C4,C26D | \$124.44 |
| GSH 309A | Coat Hook | C4,C26D | \$88.92 |
| GSH 310 | Coat Hook | C4,C26D | \$124.44 |
| GSH 310B | Coat Hook | C4,C26D | \$88.92 |
| GSH 311 | Hat and Coat Hook | C4 | \$60.13 |
| GSH 311 | Hat and Coat Hook | C26D | \$65.48 |
| GSH 317 | Cabinet Pull 3/4" DIA. 1 1/4" Long | C32D | \$16.80 |
| GSH 340 | Coat Hook | C3,C26,C26D | \$24.61 |
| GSH 341 | Coat Hook | C26D | \$28.89 |
| GSH 342 | Coat Hook | C32D | \$18.62 |

SECTION A

MISCELLANEOUS DOOR HARDWARE

| PRODUCT NUMBER | DESCRIPTION | FINISH | LIST PRICE |
|----------------|-----------------------------------|--------------------------------------|------------|
| GSH 343 | Coat Hook | C32D | \$14.98 |
| GSH 343 | Coat Hook | C32 | \$22.47 |
| GSH 343B | Coat Hook | C32D | \$11.98 |
| GSH 344 | Coat Hook | C3,C26,C26D,C15,C19 | \$31.24 |
| GSH 345 | Coat Hook | C32D | \$44.51 |
| GSH 401 | Extension Flush Bolt | C3, C4, C10, C26, C26D | \$48.04 |
| GSH 401 | Extension Flush Bolt | C10B | \$50.50 |
| GSH 401 UL | Extension Flush Bolt | C3,C4,C10,C26 C26D | \$50.50 |
| GSH 401 UL | Extension Flush Bolt | C10B,C19 | \$67.95 |
| GSH 401 WD | Wood Door Flush Bolt | C26D | \$80.36 |
| GSH 403 | Roller Latch | C3,C4,C10, C10B, C15, C19, C26, C26D | \$98.87 |
| GSH 404H | Roller Latch | C3,C4,C10,C26,C26D | \$80.36 |
| GSH 404H | Roller Latch | C10B,C19 | \$81.86 |
| GSH 404HS | Roller Latch c/w Stainless Roller | C32D | \$133.64 |
| GSH 404SO | Strike only | C26D | \$13.91 |
| GSH 405H | Roller Latch c/w Strike | C3,C4,C10,C26,C26D | \$93.41 |
| GSH 405H | Roller Latch c/w Strike | C10B,C19 | \$95.77 |
| GSH 405HS | Roller Latch c/w Stainless Roller | C32D | \$146.80 |
| GSH 405SO | Strike only | C26D | \$13.91 |
| GSH 406H | Roller Latch c/w Strike | C3,C4,C10,C26,C26D | \$133.64 |
| GSH 406H | Roller Latch c/w Strike | C10B | \$135.14 |
| GSH 406HS | Roller Latch c/w Stainless Roller | C32D | \$186.93 |
| GSH 406SO | Strike only | C26D | \$53.29 |
| GSH 407H | Roller Latch c/w Strike | C3,C4,C10,C26,C26D | \$133.64 |
| GSH 407H | Roller Latch c/w Strike | C10B | \$135.14 |
| GSH 407HS | Roller Latch c/w Stainless Roller | C32D | \$186.93 |
| GSH 407SO | Strike only | C26D | \$53.29 |
| GSH 410 / 412 | Dust Proof Strike and Plate | C26D | \$44.00 |
| GSH 413 | Rabbetted Flush Bolt Adapter | Brass | \$60.99 |
| GSH 414 / 415 | Squash Court / Drop Ring Pull | C4 | \$466.52 |
| GSH 414 / 415 | Squash Court / Drop Ring Pull | C10 | \$485.03 |
| GSH 414 / 415 | Squash Court / Drop Ring Pull | C10B | \$509.75 |
| GSH 414 / 415 | Squash Court / Drop Ring Pull | C26D | \$472.73 |
| GSH 430 | Decorative Floor Stop "90 Degree" | C3,C4,C26D,C10B | \$25.47 |
| GSH 450 | Lavatory Latch | C3,C4,C26,C26D | \$193.88 |
| GSH 935 | Drawer Pull 3 1/2" | C3 | \$30.92 |
| GSH 935 | Drawer Pull 3 1/2" | C4 | \$23.97 |
| GSH 935 | Drawer Pull 3 1/2" | C26 | \$39.38 |
| GSH 935 | Drawer Pull 3 1/2" | C26D | \$30.92 |

SECTION A

MISCELLANEOUS DOOR HARDWARE



| PRODUCT NUMBER | DESCRIPTION | FINISH | LIST PRICE |
|----------------|---|---|------------|
| GSH 945 | Drawer Pull 4 1/2" | C3 | \$34.03 |
| GSH 945 | Drawer Pull 4 1/2" | C4 | \$26.22 |
| GSH 945 | Drawer Pull 4 1/2" | C26 | \$43.23 |
| GSH 945 | Drawer Pull 4 1/2" | C26D | \$33.17 |
| GSH 3030 | Solid Brass Extruded Hinge 3" x 3" | C3,C4,C5,C14,C15,C15B,C26,C10B,C17A,C19 | \$36.38 |
| GSH 3535 | Solid Brass Extruded Hinge 3.50" x 3.50" | C3,C4,C5,C14,C15,C15B,C26,C10B,C17A,C19 | \$38.52 |
| GSH 4040 | Solid Brass Extruded Hinge 4" x 4" | C3,C4,C5,C14,C15,C15B,C26,C10B,C17A,C19 | \$39.59 |
| GSH 4040 BB | Solid Brass Extruded Hinge 4" x 4" Ball Bearing | C3,C4,C5,C14,C15,C15B,C26,C10B,C17A,C19 | \$42.80 |
| GSH 4540 BB | Solid Brass Extruded Hinge 4.50" x 4" Ball Bearing | C3,C4,C5,C14,C15,C15B,C26,C10B,C17A,C19 | \$44.94 |
| GSH 4545 | Solid Brass Extruded Hinge 4.50" x 4.50" | C3,C4,C5,C14,C15,C15B,C26,C10B,C17A,C19 | \$41.73 |
| GSH 4545 BB | Solid Brass Extruded Hinge 4.50" x 4.50" Ball Bearing | C3,C4,C5,C14,C15,C15B,C26,C10B,C17A,C19 | \$50.29 |
| GSH 5050 BB | Solid Brass Extruded Hinge 5" x 5" Ball Bearing | C3,C4,C5,C14,C15,C15B,C26,C10B,C17A,C19 | \$53.50 |
| Ball Tips | Decorative Tips | C3,C4,C5,C14,C15,C15B,C26,C10B,C17A,C19 | \$11.56 |
| Steeple Tips | Decorative Tips | C3,C4,C5,C14,C15,C15B,C26,C10B,C17A,C19 | \$11.56 |
| Acorn Tips | Decorative Tips | C3,C4,C5,C14,C15,C15B,C26,C10B,C17A,C19 | \$11.56 |
| Urn Tips | Decorative Tips | C3,C4,C5,C14,C15,C15B,C26,C10B,C17A,C19 | \$11.56 |
| Sign #102 | 6" x 6" Picto Woman | Silver / Black | \$31.89 |
| Sign #103 | 6" x 6" Picto Man | Silver / Black | \$31.89 |
| Sign #104 | 6" x 6" Handicap Logo | Silver / Black | \$31.89 |
| Sign #105 | 6" x 6" x Picto Man / Woman | Silver / Black | \$36.06 |
| Sign #106 | 6" x 8" x Picto Man / Woman / Handicap | Silver / Black | \$45.05 |
| Sign #107 | 6" x 6" Picto Woman | Black / White | \$31.89 |
| Sign #108 | 6" x 6" Picto Man | Black / White | \$31.89 |
| Sign #109 | 6" x 6" Handicap Logo | Black / White | \$31.89 |
| Sign #110 | 6" x 6" x Picto Man / Woman | Black / White | \$36.06 |
| Sign #111 | 6" x 8" x Picto Man / Woman / Handicap | Black / White | \$45.05 |
| Sign #112 | 6" x 6" Picto Woman | Blue / White | \$31.89 |
| Sign #113 | 6" x 6" Picto Man | Blue / White | \$31.89 |
| Sign #114 | 6" x 6" Handicap Logo | Blue / White | \$31.89 |
| Sign #115 | 6" x 6" x Picto Man / Woman | Blue / White | \$36.06 |
| Sign #116 | 6" x 8" x Picto Man, Woman, Handicap | Blue / White | \$45.05 |

SECTION B DOOR PULLS

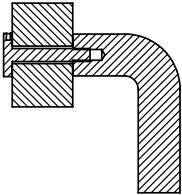
| ENGRAVING | | | | |
|---|--|----------|---------------|-----------|
| | ROUND MATERIAL | | FLAT MATERIAL | |
| | 3/4" DIA | 1" DIA | 3/4" Letter | 1" Letter |
| PULL OR PUSH | \$63.67 | \$69.76 | \$34.88 | \$43.23 |
| POUSSEZ | \$116.63 | \$121.45 | \$61.31 | \$68.59 |
| TIREZ | \$82.93 | \$86.56 | \$43.23 | \$52.97 |
| | | | | |
| Engraved Door Pulls may require door handing. All engraving is painted in black by default. Custom engraving and colours available. Price on application (P.O.A.) Note: For 1-1/4" Round material Add \$5.00 to 1" price. For 1-1/2" Round material Add \$10.00 to 1" price. | | | | |
| MOUNTING | | | | |
| # 2 | THROUGH BOLT MOUNTING single pull (default) | | No extra cost | |
| # 4B | SPANNER HEAD SECURITY BOLT- Brass or Bronze | | \$76.93 | Pair (2) |
| # 4B | SPANNER HEAD SECURITY BOLT- Stainless Steel | | \$45.69 | Pair (2) |
| # 5 | CONCEALED MOUNTNGS BOLTS B to B | | \$27.61 | SET |
| # 5-1 | C/W 1 1/4" DIA. WASHERS FOR GLASS DOORS B to B | | \$33.71 | SET |
| # 5-2 | SINGLE CONCEALED MTG (Specify Wood or Metal) | | \$27.61 | PER PULL |
| | | | | |
| Note: All pulls will come with #2 mounting bolts for 1-3/4" doors unless specified otherwise #5 Mounting B to B is a set (2 pulls) for mounting back to back for 1-3/4" doors unless specified otherwise When Mounting #4B Glass and #5-1 Glass is selected then bolts for 1/2" glass will be supplied unless specified otherwise 3/8"-16 x 2-1/4" SS Mounting Bolts and washers per pair \$17.00. 5/16"-18 x 2-1/4" SS Mounting Bolts and washers per pair \$15.00. Four 4" door thickness and above add \$50.00 | | | | |

SECTION B DOOR PULLS

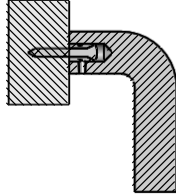


MOUNTINGS AND FASTENERS

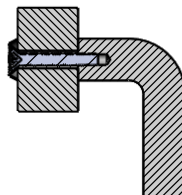
#4B Wood or Metal



#5-2 Wood

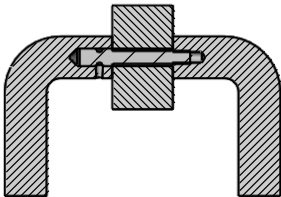


2 Wood or Metal

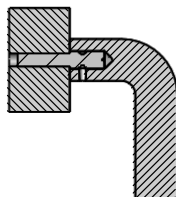


Please specify
Door thickness and
material for all Door
Pull orders.

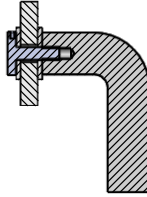
#5 Wood or Metal



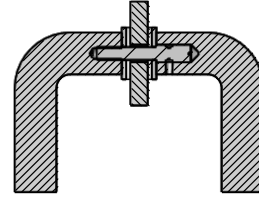
#5-2 Metal



#4B Glass



#5-1 Glass



Rivnut not included

SECTION B DOOR PULLS

| PRODUCT NUMBER | C4 LIST PRICE | C10 LIST PRICE | C10B LIST PRICE | C15 LIST PRICE | C26D LIST PRICE | C28 LIST PRICE | C32D LIST PRICE |
|------------------------------|---------------|----------------|-----------------|----------------|-----------------|----------------|-----------------|
| GSH AF-7 | \$223.63 | \$317.36 | \$330.63 | \$247.60 | \$317.36 | | \$223.63 |
| GSH AF-8 | \$240.43 | \$338.98 | \$353.42 | \$266.86 | \$338.98 | | \$240.43 |
| GSH AF-14 | \$833.10 | \$1,059.09 | \$1,113.23 | \$958.08 | \$1,059.09 | \$497.66 | \$855.89 |
| GSH AF-15 | \$861.89 | \$1,081.98 | \$1,131.20 | \$991.78 | \$1,011.04 | \$530.19 | \$888.42 |
| GSH 105 | \$741.72 | \$1,004.94 | \$1,084.34 | \$830.64 | \$883.61 | \$591.50 | \$579.73 |
| GSH 106 | \$774.15 | \$1,038.65 | \$1,138.48 | \$889.60 | \$908.86 | \$635.90 | \$667.36 |
| GSH 111 | \$503.65 | \$634.72 | \$694.86 | \$578.23 | \$599.84 | \$341.44 | \$480.86 |
| GSH 119 | \$772.97 | \$869.16 | \$910.04 | \$890.78 | \$931.65 | \$503.65 | \$716.79 |
| GSH 160 Offset Ladder Pull | P.O.A. | P.O.A. | P.O.A. | P.O.A. | P.O.A. | P.O.A. | \$522.48 |
| GSH 161 Offset Ladder Pull | P.O.A. | P.O.A. | P.O.A. | P.O.A. | P.O.A. | P.O.A. | \$471.87 |
| GSH 162 Straight Ladder Pull | P.O.A. | P.O.A. | P.O.A. | P.O.A. | P.O.A. | P.O.A. | \$432.60 |
| GSH 163 Straight Ladder Pull | P.O.A. | P.O.A. | P.O.A. | P.O.A. | P.O.A. | P.O.A. | \$376.43 |
| GSH 164 Offset Ladder Pull | P.O.A. | P.O.A. | P.O.A. | P.O.A. | P.O.A. | \$528.90 | \$594.39 |
| GSH 165 Offset Ladder Pull | P.O.A. | P.O.A. | P.O.A. | P.O.A. | P.O.A. | \$577.05 | \$648.31 |
| GSH 166 Straight Ladder Pull | P.O.A. | P.O.A. | P.O.A. | P.O.A. | P.O.A. | \$476.04 | \$504.51 |
| GSH 167 Straight Ladder Pull | P.O.A. | P.O.A. | P.O.A. | P.O.A. | P.O.A. | \$490.49 | \$552.76 |
| GSH 168 | \$550.62 | \$632.37 | \$729.74 | \$632.37 | \$811.49 | \$443.62 | |
| GSH 169-1 | \$253.70 | \$385.84 | \$399.11 | \$276.49 | \$305.38 | \$204.37 | \$258.51 |
| GSH 169-2 | \$341.44 | \$561.43 | \$581.87 | \$364.23 | \$394.30 | \$256.05 | \$357.06 |
| GSH 170 | \$997.78 | \$1,204.50 | \$1,253.83 | \$1,050.63 | \$1,115.58 | | |
| GSH 171 | \$970.17 | \$1,186.52 | \$1,206.96 | \$991.78 | \$1,084.34 | | |
| GSH 173 | \$445.98 | \$549.34 | \$610.65 | \$539.82 | \$583.04 | \$393.12 | \$0.00 |
| GSH 174 | \$407.56 | \$516.92 | \$590.21 | \$491.67 | \$348.61 | \$328.17 | \$0.00 |
| GSH 181 | \$700.85 | \$872.80 | \$958.08 | \$787.41 | \$840.27 | \$605.83 | \$0.00 |
| GSH 900 | \$101.01 | \$124.98 | \$134.61 | \$117.81 | \$126.26 | | |
| GSH 936 | \$111.82 | \$173.13 | \$180.30 | \$118.98 | \$128.61 | | |
| GSH 950 (C19) \$80.00 | \$57.67 | \$63.67 | \$68.48 | \$57.67 | \$63.67 | | |
| GSH 955 | \$78.11 | \$91.38 | \$99.83 | | \$87.74 | | |
| GSH 960 (C19) \$72.00 | \$49.33 | \$55.32 | \$57.67 | \$51.68 | \$55.32 | | |
| GSH 961 | \$93.73 | \$109.35 | \$116.63 | \$99.83 | \$102.19 | | |
| GSH 980 (C19) \$18.00 | \$18.08 | \$19.26 | \$19.26 | \$18.08 | \$18.08 | | |
| GSH 980B | \$25.25 | \$26.43 | \$28.89 | \$25.25 | \$26.43 | | |
| GSH 981 | \$46.87 | \$58.96 | \$66.13 | \$52.86 | \$56.50 | \$45.69 | \$56.50 |
| GSH 1007 | \$81.75 | \$114.17 | \$134.61 | \$95.02 | \$101.01 | \$44.51 | \$75.76 |
| GSH 1009 | \$90.20 | \$124.98 | \$139.42 | \$108.18 | \$115.45 | \$46.87 | \$85.39 |
| GSH 1012 | \$104.54 | \$137.07 | \$150.23 | \$120.27 | \$128.61 | \$50.50 | \$99.83 |
| GSH 1107 | \$128.61 | \$161.04 | \$174.30 | \$141.88 | \$151.51 | \$62.49 | \$101.01 |
| GSH 1109 | \$138.24 | \$170.67 | \$182.76 | \$155.04 | \$164.67 | \$64.95 | \$109.35 |
| GSH 1112 | \$151.51 | \$183.93 | \$197.20 | \$167.13 | \$177.94 | \$68.48 | \$123.80 |

SECTION B

DOOR PULLS



| PRODUCT NUMBER | C4 LIST PRICE | C10 LIST PRICE | C10B LIST PRICE | C15 LIST PRICE | C26D LIST PRICE | C28 LIST PRICE | C32D LIST PRICE |
|----------------|---------------|----------------|-----------------|----------------|-----------------|----------------|-----------------|
| GSH 1180-1 | \$131.08 | \$189.93 | \$201.91 | \$158.68 | \$171.95 | \$85.39 | \$138.24 |
| GSH 1180-2 | \$193.56 | \$315.01 | \$325.82 | \$223.63 | \$233.26 | \$112.99 | \$183.93 |
| GSH 1181-1 | \$167.13 | \$235.61 | \$241.61 | \$197.20 | \$210.36 | \$110.64 | \$171.95 |
| GSH 1181-2 | \$215.18 | \$344.97 | \$355.88 | \$262.04 | \$272.85 | \$132.25 | \$206.72 |
| GSH 1182-1 | \$173.13 | \$266.86 | \$282.48 | \$203.19 | \$230.80 | \$115.45 | \$179.12 |
| GSH 1182-2 | \$235.61 | \$389.48 | \$402.75 | \$264.50 | \$276.49 | \$139.42 | \$218.82 |
| GSH 1184-1 | \$161.04 | \$227.16 | \$238.08 | \$194.74 | \$209.19 | \$107.00 | \$167.13 |
| GSH 1184-2 | \$214.00 | \$340.26 | \$351.07 | \$258.51 | \$263.22 | \$128.61 | \$205.55 |
| GSH 1185-1 | \$161.04 | \$218.82 | \$231.98 | \$187.57 | \$201.91 | \$114.17 | \$168.31 |
| GSH 1185-2 | \$223.63 | \$344.97 | \$355.88 | \$253.70 | \$263.22 | \$143.06 | \$216.35 |
| GSH 1207 | \$103.36 | \$152.69 | \$168.31 | \$120.27 | \$134.61 | \$57.67 | \$97.37 |
| GSH 1209 | \$121.45 | \$165.85 | \$177.94 | \$135.89 | \$147.87 | \$64.95 | \$108.18 |
| GSH 1212 | \$134.61 | \$185.11 | \$195.92 | \$149.05 | \$167.13 | \$70.94 | \$115.45 |
| GSH 1707 | \$91.38 | \$143.06 | \$155.04 | \$109.35 | \$121.45 | \$56.50 | \$88.92 |
| GSH 1709 | \$105.82 | \$158.68 | \$170.67 | \$122.62 | \$141.88 | \$59.92 | \$98.55 |
| GSH 1712 | \$122.62 | \$180.30 | \$194.74 | \$147.87 | \$157.50 | \$62.49 | \$114.17 |
| GSH 1907 | \$96.19 | \$149.05 | \$163.50 | \$109.35 | \$122.62 | \$63.67 | \$92.56 |
| GSH 1909 | \$103.36 | \$165.85 | \$183.93 | \$116.63 | \$129.79 | \$70.94 | \$179.12 |
| GSH 1912 | \$128.61 | \$194.74 | \$214.00 | \$144.24 | \$162.32 | \$79.39 | \$124.98 |
| GSH 2200H | \$165.85 | | | \$197.20 | \$185.11 | | \$187.57 |
| GSH 2300H | \$163.50 | | | \$169.49 | \$182.76 | | \$147.87 |
| GSH 2400F | | | | | | | \$118.02 |
| GSH 2500H | | | | | | | \$58.42 |
| GSH 2616H | \$129.79 | \$150.23 | \$165.85 | \$139.42 | \$147.87 | \$55.32 | \$82.93 |
| GSH 2620H | \$147.87 | \$201.91 | \$359.41 | \$140.60 | \$144.24 | \$60.13 | \$97.37 |
| GSH 2632 | | | | | | | \$206.72 |
| GSH 2633 | | | | | | | \$206.72 |
| GSH 4007-1 | \$75.76 | \$112.99 | \$123.80 | \$88.92 | \$96.19 | \$44.51 | \$63.67 |
| GSH 4007-2 | \$96.19 | \$181.47 | \$244.07 | \$120.27 | \$128.61 | \$55.32 | \$93.73 |
| GSH 4009-1 | \$78.11 | \$127.44 | \$138.24 | \$93.73 | \$102.19 | \$45.69 | \$70.94 |
| GSH 4009-2 | \$114.17 | \$205.55 | \$215.18 | \$129.79 | \$139.42 | \$58.96 | \$108.18 |
| GSH 4012-1 | \$95.02 | \$146.70 | \$155.04 | \$105.82 | \$115.45 | \$49.33 | \$135.89 |
| GSH 4012-2 | \$127.44 | \$234.44 | \$247.60 | \$147.87 | \$157.50 | \$63.67 | \$118.98 |
| GSH 4107-1 | \$104.54 | \$146.70 | \$156.33 | \$118.98 | \$127.44 | \$63.67 | \$93.73 |
| GSH 4107-2 | \$124.98 | \$215.18 | \$229.62 | \$151.51 | \$158.68 | \$78.11 | \$123.80 |
| GSH 4109-1 | \$108.18 | \$159.86 | \$171.95 | \$156.33 | \$132.25 | \$66.13 | \$98.55 |
| GSH 4109-2 | \$134.61 | \$227.16 | \$242.78 | \$159.86 | \$169.49 | \$78.11 | \$152.69 |
| GSH 4112-1 | \$116.63 | \$179.12 | \$188.75 | \$135.89 | \$145.41 | \$70.94 | \$107.00 |
| GSH 4112-2 | \$147.87 | \$268.04 | \$281.30 | \$177.94 | \$187.57 | \$81.75 | \$143.06 |

SECTION B DOOR PULLS

| PRODUCT NUMBER | C4 LIST PRICE | C10 LIST PRICE | C10B LIST PRICE | C15 LIST PRICE | C26D LIST PRICE | C28 LIST PRICE | C32D LIST PRICE |
|---|---------------|----------------|-----------------|----------------|-----------------|----------------|-----------------|
| GSH 4207-1 | \$109.35 | \$150.23 | \$162.32 | \$123.80 | \$143.06 | \$62.49 | \$87.74 |
| GSH 4207-2 | \$129.79 | \$212.82 | \$227.16 | \$164.67 | \$175.48 | \$73.30 | \$117.81 |
| GSH 4209-1 | \$122.62 | \$157.50 | \$173.13 | \$138.24 | \$147.87 | \$63.67 | \$95.02 |
| GSH 4209-2 | \$149.05 | \$231.98 | \$245.24 | \$174.30 | \$185.11 | \$76.93 | \$133.43 |
| GSH 4212-1 | \$123.80 | \$182.76 | \$204.37 | \$150.23 | \$161.04 | \$67.30 | \$107.00 |
| GSH 4212-2 | \$157.50 | \$266.86 | \$287.30 | \$192.39 | \$204.37 | \$81.75 | \$143.06 |
| GSH 4307-1 | \$103.36 | \$149.05 | \$169.49 | \$122.62 | \$131.08 | \$50.50 | \$82.93 |
| GSH 4307-2 | \$129.79 | \$230.80 | \$251.24 | \$157.50 | \$163.50 | \$67.41 | \$112.99 |
| GSH 4309-1 | \$109.35 | \$159.86 | \$179.12 | \$132.25 | \$140.60 | \$55.32 | \$92.56 |
| GSH 4309-2 | \$139.42 | \$253.70 | \$277.67 | \$167.13 | \$177.94 | \$72.12 | \$131.08 |
| GSH 4312-1 | \$124.98 | \$182.76 | \$205.55 | \$146.70 | \$157.50 | \$60.13 | \$105.82 |
| GSH 4312-2 | \$156.33 | \$289.76 | \$312.55 | \$208.01 | \$199.56 | \$78.11 | \$143.06 |
| GSH 4607-1 | \$91.38 | \$133.43 | \$155.04 | \$108.18 | \$118.98 | \$52.86 | \$78.11 |
| GSH 4607-2 | \$111.82 | \$201.91 | \$227.16 | \$140.60 | \$151.51 | \$63.67 | \$107.00 |
| GSH 4609-1 | \$102.19 | \$155.04 | \$176.76 | \$120.27 | \$133.43 | \$57.67 | \$87.74 |
| GSH 4609-2 | \$128.61 | \$233.26 | \$252.41 | \$157.50 | \$170.67 | \$69.76 | \$124.98 |
| GSH 4612-1 | \$115.45 | \$179.12 | \$201.91 | \$137.07 | \$152.69 | \$62.49 | \$98.55 |
| GSH 4612-2 | \$146.70 | \$268.04 | \$294.57 | \$179.12 | \$194.74 | \$76.93 | \$133.43 |
| GSH 4900 | | | | | | | \$144.99 |
| GSH 5000-1 up to 34" | \$199.56 | \$373.86 | \$403.93 | \$229.62 | \$254.87 | \$117.81 | \$201.91 |
| Extra cost per inch | \$7.17 | \$9.63 | \$9.63 | \$8.45 | \$8.45 | \$5.99 | \$7.17 |
| GSH 5000-2 up to 34" | \$293.29 | \$518.09 | \$603.48 | \$310.19 | \$338.98 | \$151.51 | \$307.73 |
| Extra cost per inch | \$9.63 | \$11.98 | \$11.98 | \$10.81 | \$10.81 | \$8.45 | \$9.63 |
| GSH 6012 | \$222.35 | | | \$236.79 | \$242.78 | \$129.79 | \$251.24 |
| <p>"Aluminum Colour Anodized (Duranodic and Black) If list value of C28 is under \$300.00 add 50%. If list value is over \$300.00 add 30% to C28. Finishes C3, C9, C14, C26 and C32 add 50% to C4, C10, C15, C26D and C32D." Note: Type 316 add 60% to C32D Price Extra post for 5000 add \$80.00</p> | | | | | | | |

SECTION C

GRAB BARS



| PRODUCT NUMBER | SERIES 50 1-1/4" O.D. STAINLESS STEEL EXPOSED | SERIES 51 1-1/4" O.D. STAINLESS STEEL CONCEALED | SERIES 60 1-1/2" O.D. STAINLESS STEEL EXPOSED | SERIES 61 1-1/2" O.D. STAINLESS STEEL CONCEALED | LENGTH OF PEENING (INCHES) |
|----------------|---|---|---|---|----------------------------------|
| GSH C02 | \$79.72 | \$95.77 | \$104.43 | \$124.76 | 4 |
| GSH C02B | \$82.93 | \$97.91 | \$108.93 | \$127.54 | 8 |
| GSH C03 | \$86.35 | \$100.05 | \$113.53 | \$130.11 | 10 |
| GSH C04 | \$93.63 | \$107.21 | \$123.37 | \$139.85 | 16 |
| GSH C05 | \$100.79 | \$113.96 | \$136.21 | \$152.69 | 22 |
| GSH C05B | \$103.26 | \$116.63 | \$139.85 | \$156.33 | 24 |
| GSH C06 | \$108.39 | \$122.30 | \$147.02 | \$163.39 | 28 |
| GSH C07 | \$125.51 | \$139.53 | \$165.32 | \$189.07 | 40 |
| GSH C08 | \$180.19 | \$204.80 | \$244.71 | \$269.64 | 28 |
| GSH C09 | \$180.19 | \$204.80 | \$244.71 | \$269.64 | 28 |
| GSH C10 | \$174.20 | \$195.81 | \$234.97 | \$255.41 | 20 |
| GSH C11 | \$174.20 | \$195.81 | \$234.97 | \$255.41 | 20 |
| GSH C12 | \$198.16 | \$218.92 | \$267.93 | \$286.87 | 36 |
| GSH C12C | \$251.66 | \$272.42 | \$321.43 | \$340.37 | 36 |
| GSH C13 | \$198.16 | \$218.92 | \$267.93 | \$286.87 | 36 |
| GSH C14 | \$291.79 | \$324.10 | \$420.83 | \$453.89 | 48 |
| GSH C15 | \$291.79 | \$324.10 | \$420.83 | \$453.89 | 48 |
| GSH C16 | \$214.32 | \$247.60 | \$275.63 | \$308.59 | 48 |
| GSH C17 | \$200.84 | \$237.65 | \$269.64 | \$302.81 | 36 |
| GSH C18 | \$335.45 | \$366.05 | \$488.67 | \$521.73 | 78 |
| GSH C19 | \$335.45 | \$366.05 | \$488.67 | \$521.73 | 78 |
| GSH C20 | \$322.18 | \$355.99 | \$474.01 | \$506.00 | 54 |
| GSH C21 | \$322.18 | \$355.99 | \$474.01 | \$506.00 | 54 |
| GSH C22 | \$225.24 | \$247.60 | \$269.11 | \$299.60 | 26 |
| GSH C23 | \$225.24 | \$247.60 | \$269.11 | \$299.60 | 26 |
| GSH C24 | \$239.25 | \$262.69 | \$309.55 | \$342.83 | 32 |
| GSH C25 | \$239.25 | \$262.69 | \$309.55 | \$342.83 | 32 |
| GSH C26 | \$361.87 | \$389.27 | \$440.84 | \$473.90 | 32 |
| GSH C27 | \$154.51 | \$175.27 | \$181.47 | \$212.40 | 22 |
| GSH C28 | \$170.67 | \$200.09 | \$259.26 | \$285.48 | 41 |
| GSH C29 | \$167.13 | \$191.53 | \$243.43 | \$268.25 | 41 |
| GSH C30 | \$99.51 | \$117.06 | \$138.24 | \$154.72 | 16 |
| GSH C31 | \$168.20 | \$201.37 | \$292.11 | \$311.69 | 36 |
| GSH C32 | \$350.85 | \$387.13 | \$438.59 | \$466.84 | 40 |
| GSH C33 | \$260.22 | \$281.20 | \$300.56 | \$314.05 | 28 |
| GSH C34 | \$260.22 | \$281.20 | \$300.56 | \$314.05 | 28 |
| GSH C35A | \$835.46 | | | | 16 |

| PRODUCT NUMBER | SERIES 50 1-1/4" O.D. STAINLESS STEEL EXPOSED | SERIES 51 1-1/4" O.D. STAINLESS STEEL CONCEALED | SERIES 60 1-1/2" O.D. STAINLESS STEEL EXPOSED | SERIES 61 1-1/2" O.D. STAINLESS STEEL CONCEALED | LENGTH OF PEENING (INCHES) |
|--|---|---|---|---|----------------------------------|
| GSH C35AT | \$895.59 | | | | 16 |
| GSH C36 | \$322.82 | \$351.82 | \$429.07 | \$457.32 | 42 |
| GSH C37 | \$150.23 | \$157.08 | \$335.12 | \$352.03 | 36 |
| GSH C38 | \$242.36 | \$265.47 | \$309.44 | \$334.16 | 34 |
| GSH C39 | \$242.36 | \$265.47 | \$309.44 | \$334.16 | 34 |
| GSH C40 | \$183.93 | \$209.29 | \$223.63 | \$247.60 | 24 |
| GSH C41 | \$183.93 | \$209.29 | \$223.63 | \$247.60 | 24 |
| GSH C42 30" | \$486.85 | | | | 22 |
| GSH C42T | \$546.98 | | | | |
| GSH BR-50 | \$295.21 | | | | |
| GSH BR-51 | | \$295.21 | | | |
| PEENED | 1-1/4" O.D. | 1-1/4" O.D. | 1-1/2" O.D. | 1-1/2" O.D. | PRICE UNIT |
| STAINLESS | \$1.18 | \$1.18 | \$1.50 | \$1.50 | PER INCH |
| Anchoring Devices (Non-Standard Mountings) | | | | | |
| Type A (Per Flange) | \$27.07 | \$27.07 | \$27.07 | \$27.07 | |
| Type B (Per Flange) | \$54.14 | \$54.14 | \$54.14 | \$54.14 | |
| Type C (Per Flange) | \$22.26 | \$22.26 | \$22.26 | \$22.26 | |
| Type D (Per Flange) | \$13.80 | \$13.80 | \$13.80 | \$13.80 | |
| Note: Add 30% for C19 (Black) No Peening on C19 (Black) | | | | | |

SECTION D

FLATWARE



| | GSH 80 KICK PLATES | 81 Push Plates |
|---|----------------------------|----------------------------|
| 32D 20ga Type 304 | \$13.48 | \$15.52 |
| | | |
| | GSH 80A KICK PLATES | GSH 81A PUSH PLATES |
| C3 18ga | \$68.50 | \$78.80 |
| C4 18ga | \$61.00 | \$70.30 |
| C10 18ga | \$59.80 | \$68.60 |
| C10B 18ga | \$89.70 | \$103.10 |
| C19 18ga | \$35.20 | \$40.50 |
| C28 18ga | \$14.50 | \$16.77 |
| C32D 18ga Type 304 | \$15.19 | \$17.44 |
| C32 18ga Type 304 | \$22.79 | \$26.22 |
| GSH 80B .0062 Type 304 C32D | \$22.04 | 81B Push Plate \$25.25 |
| GSH 80C .1025 Type 304 C32D | \$91.70 | 81C Push Plate \$100.15 |
| GSH 82 to 85N | P.O.A. | P.O.A. |
| GSH 78 Clear Plastic Plates | \$21.40 | \$24.50 |
| GSH 81A Custom Escutcheons | | \$19.48 Per Hole |
| | | |
| Engraving | | |
| PICTO Male or Female 3 1/2" HIGH 32D | | \$62.06 |
| PICTO HANDICAP 3 1/2" HIGH | | \$73.83 |
| | | |
| | 3/4" Letter | 1" Letter |
| PULL OR PUSH | \$34.88 | \$43.23 |
| POUSSEZ | \$61.31 | \$68.59 |
| TIREZ | \$43.23 | \$52.97 |
| All engraving is painted in black by default. Custom engraving and colours P.O.A. | | |
| | | |
| DOOR EDGES | | |
| GSH 30N to GSH 46N | | P.O.A. |
| GSH 47N and 48N U.L.C. | | P.O.A. |
| | | |
| JAMB EDGE/CORNER GUARD | | |
| GSH J82 | | P.O.A. |
| GSH J83 | | P.O.A. |
| | | |
| ARMOR PLATES U.L.C. | | |
| GSH 90F | C32D | \$20.50 |
| Note: P.O.A (Price on Application Contact Office) Kickplates and pushplates are priced per 100 Square inches | | |

| FRAME GUARDS U.L.C. | | |
|--|------------------------------------|-------------------------|
| GSH 50N | C32D | P.O.A. |
| MS | #6-32 x 3/8 Machine Screws per 100 | Stainless Steel \$30.39 |
| | | Brass or Bronze \$41.62 |
| WS | #6 x 5/8 Wood Screws per 100 | Stainless Steel \$30.39 |
| | | Brass or Bronze \$41.62 |
| ROLL OF TAPE | | |
| 1 ROLL 65M | | \$309.02 |
| <p>"• #6 x 5/8" Oval Head Wood Screws Supplied Standard unless specified otherwise</p> <ul style="list-style-type: none"> • Brass and bronze kick plates larger in height than 24" - add 30% to list price • All Kick plates / Push plates priced per hundred square inches • Two sided tape mounting will have \$5.00 List per hundred square inch added to kick or push plate price • Kick and Push Plates will be priced to nearest full inch (Rounded up) Note: P.O.A. means Price on Application" | | |

SECTION E

GUARD BARS & GUIDE RAILS



| PRODUCT | SIZE | C28 .50" X 1.50" | C28 .50" X 2" | C32D .50" X 1.50" | C32D .50" X 2" |
|---|-----------|------------------|---------------|-------------------|----------------|
| GSH FGR-601 | 30" x 30" | \$317.36 | \$342.72 | \$490.49 | \$710.48 |
| GSH FGR-602 | 30" x 30" | \$535.00 | \$596.20 | \$991.78 | \$1,182.89 |
| GSH FGR-603 | 30" x 30" | \$634.83 | \$726.10 | \$1,216.48 | \$1,499.07 |
| | 42" x 30" | \$768.15 | \$1,287.53 | \$1,585.63 | \$1744.19 |
| GSH FGR-604 | 30" x 30" | \$754.99 | \$865.52 | \$1,454.56 | \$1,803.27 |
| | 42" x 30" | \$916.03 | \$1,538.77 | \$1,906.63 | \$2,099.29 |
| GSH FBB-651 | 32" c/c | \$192.39 | \$226.09 | \$396.76 | \$484.50 |
| GSH FBB-652 | 32" c/c | \$182.65 | \$208.01 | \$376.21 | \$456.78 |
| GSH FBB-653 | 32" c/c | \$185.11 | \$211.54 | \$372.68 | \$451.97 |
| Prices above are for the standard size and designs. Custom designs are available. | | | | | |
| <p>"Optional Sizes Available. Add per inch. C28 .50" x 1.50" add \$2.80 per inch C32D .50" x 1.50" add \$7.per inch C28 .50" x 2" add \$3.80 per inch C32D .50" x 2" add \$8.70 per inch</p> <p>GUIDE RAIL FASTENINGS: Fastners not included Aluminum Colour Anodizing (Duro or Black)</p> <p>If list value of C28 is under \$300.00 add 50%, If over \$300.00 add 30% to C28."</p> | | | | | |

| PRODUCT NUMBER | DESCRIPTION | SIZE | FINISH | LIST PRICE |
|----------------|---|------|--------|------------|
| GSH 800 | Straight Guard Bar | 34" | C28 | \$195.92 |
| GSH 800 | Straight Guard Bar | 34" | C32D | \$343.79 |
| GSH 801X | Straight Guard Bar (Without Pads) | 34" | C28 | \$153.87 |
| GSH 801X | Straight Guard Bar (Without Pads) | 34" | C32D | \$301.74 |
| GSH 802N | Straight Guard Bar (Offset) | 34" | C28 | \$344.97 |
| GSH 802N | Straight Guard Bar (Offset) | 34" | C32D | \$447.15 |
| GSH 802X | Straight Guard Bar (Offset, Without Pads) | 34" | C28 | \$302.92 |
| GSH 802X | Straight Guard Bar (Offset, Without Pads) | 34" | C32D | \$393.12 |
| GSH 803N | Straight Guard Bar (Double) | 34" | C28 | \$393.12 |
| GSH 803N | Straight Guard Bar (Double) | 34" | C32D | \$709.30 |
| GSH 804N | Straight Guard Bar (Double, Offset) | 34" | C28 | \$512.85 |
| GSH 804N | Straight Guard Bar (Double, Offset) | 34" | C32D | \$709.20 |
| GSH 815 | Single Straight Bar | 34" | C28 | \$147.87 |
| GSH 815 | Single Straight Bar | 34" | C32D | \$295.75 |
| GSH 837 | Push Plate and Bar | 34" | C28 | \$288.47 |
| GSH 837 | Push Plate and Bar | 34" | C32D | \$485.67 |
| GSH 837D | Push Plate with Double Bar | 34" | C28 | \$578.23 |
| GSH 837D | Push Plate with Double Bar | 34" | C32D | \$968.89 |

SECTION E GUARD BARS & GUIDE RAILS

| PRODUCT NUMBER | DESCRIPTION | SIZE | FINISH | LIST PRICE |
|----------------|--------------------------|------|--------|------------|
| GSH 851 | Guard Bar | 34" | C28 | \$197.20 |
| GSH 851 | Guard Bar | 34" | C32D | \$343.79 |
| GSH 851D | Guard Bar (Double) | 34" | C28 | \$395.47 |
| GSH 851D | Guard Bar (Double) | 34" | C32D | \$691.22 |
| GSH 852X | Guard Bar (Without Pad) | 34" | C28 | \$153.87 |
| GSH 852X | Guard Bar (Without Pad) | 34" | C32D | \$301.74 |
| GSH 855 | Bumper Bar | 34" | C28 | \$204.37 |
| GSH 855 | Bumper Bar | 34" | C32D | \$363.05 |
| GSH 855D | Bumper Bar (Double) | 34" | C28 | \$409.92 |
| GSH 855D | Bumper Bar (Double) | 34" | C32D | \$730.92 |
| GSH 856X | Bumper Bar (Without Pad) | 34" | C28 | \$162.32 |
| GSH 856X | Bumper Bar (Without Pad) | 34" | C32D | \$321.00 |

| GUIDE RAILS | SIZE H X W | | PANEL | LIST PRICE |
|-------------|------------|-------|-----------------|------------|
| GSH GR #1 | 30" | x 42" | - | \$825.83 |
| GSH GR #1F | 30" | x 42" | - | \$991.78 |
| GSH GR #2 | 30" | x 30" | - | \$762.16 |
| GSH GR #2F | 30" | x 30" | - | \$928.01 |
| GSH GR #3 | 30" | x 42" | - | \$405.10 |
| GSH GR #3F | 30" | x 42" | - | \$569.78 |
| GSH GR #4 | 30" | x 30" | - | \$381.03 |
| GSH GR #4F | 30" | x 30" | - | \$545.81 |
| GSH GR #5 | 30" | x 42" | Stainless Steel | \$1,422.14 |
| GSH GR #5F | 30" | x 42" | Stainless Steel | \$1,587.99 |
| GSH GR #6 | 30" | x 30" | Stainless Steel | \$1,334.40 |
| GSH GR #6F | 30" | x 30" | Stainless Steel | \$1,500.25 |
| GSH GR #9 | 30" | | - | \$296.93 |
| GSH GR #9F | 30" | | - | \$379.85 |
| GSH GR #10 | 30" | x 42" | Stainless Steel | \$1,422.14 |
| GSH GR #10F | 30" | x 42" | Stainless Steel | \$1,587.99 |

SECTION F

CONTINUOUS HINGES



| | | | | | |
|------------------------------|--|--------------|----------|-------------------|------------|
| 930 Series Aluminum | | | | | |
| MODEL CH-931 | | | | | |
| FULL MORTISE | | OPENING SIZE | C28 | | |
| CH-931 X 83-1/8" | | 7' | \$295.10 | | |
| CH-931 X 95-1/8" | | 8' | \$325.50 | | |
| 940 Series Steel | | | | | |
| MODEL CH-941 | | | U.L.C. | Finish Prime Coat | |
| STEEL FULL MORTISE | | | | | |
| 7' | | | | \$530.30 | |
| 8' | | | | \$605.60 | |
| 10' | | | | \$939.20 | |
| MODEL CH-943 | | | U.L.C. | Finish Prime Coat | |
| STEEL HALF WRAP EDGE GUARD | | | | | |
| 7' | | | | \$755.00 | |
| 8' | | | | \$911.20 | |
| 10' | | | | \$1,252.70 | |
| MODEL CH-944 | | | U.L.C. | Finish Prime Coat | |
| STEEL HALF MORTISE | | | | | |
| 7' | | | | \$598.80 | |
| 8' | | | | \$656.10 | |
| 10' | | | | \$928.00 | |
| MODEL CH-945 | | | U.L.C. | Finish Prime Coat | |
| STEEL HALF MORTISE / GUARD | | | | | |
| 7' | | | | \$632.50 | |
| 8' | | | | \$719.00 | |
| 10' | | | | \$1,099.90 | |
| MODEL CH-946 | | | U.L.C. | Finish Prime Coat | |
| STEEL SWING CLEAR | | | | | |
| 7' | | | | \$695.40 | |
| 8' | | | | \$790.90 | |
| 10' | | | | \$839.30 | |
| MODEL CH-947 | | | U.L.C. | Finish Prime Coat | |
| STEEL FULL SURFACE | | | | | |
| 7' | | | | \$626.90 | |
| 8' | | | | \$704.40 | |
| 10' | | | | \$947.10 | |
| 950 Series Stainless Steel | | | | | |
| MODEL CH-951 | | | U.L.C. | Finish C32D | CH-951HD |
| STAINLESS STEEL FULL MORTISE | | | | | |
| 7' | | | | \$883.10 | \$1,086.00 |
| 8' | | | | \$1,057.20 | \$1,300.00 |
| 10' | | | | \$1,260.60 | \$1,549.00 |

SECTION F CONTINUOUS HINGES

| | | | |
|--|--------|-------------|-----------------|
| MODEL CH-952 | U.L.C. | Finish C32D | CH-952HD |
| STAINLESS STEEL FULL WRAP EDGE GUARD | | | |
| 7' | | \$1,251.60 | \$1,538.00 |
| 8' | | \$1,389.80 | \$1,708.00 |
| 10' | | \$1,684.10 | \$2,701.00 |
| MODEL CH-952E | U.L.C. | Finish C32D | |
| EXTENDED ST. ST. FULL WRAP EDGE GUARD | | | |
| 7' | | \$1,475.20 | |
| 8' | | \$1,657.20 | |
| 10' | | \$1,996.50 | |
| MODEL CH-953 | U.L.C. | Finish C32D | CH-953HD |
| STAINLESS STEEL HALF WRAP EDGE GUARD | | | |
| 7' | | \$1,113.40 | \$1,368.00 |
| 8' | | \$1,269.60 | \$1,560.00 |
| 10' | | \$1,565.00 | \$1,925.00 |
| MODEL CH-954 | U.L.C. | Finish C32D | |
| STAINLESS STEEL HALF MORTISE | | | |
| 7' | | \$865.10 | |
| 8' | | \$961.70 | |
| 10' | | \$1,177.40 | |
| MODEL CH-955 | U.L.C. | Finish C32D | |
| STAINLESS STEEL HALF MORTISE/GUARD | | | |
| 7' | | \$986.40 | |
| 8' | | \$1,110.00 | |
| 10' | | \$1,367.30 | |
| MODEL CH-956 | U.L.C. | Finish C32D | |
| STAINLESS STEEL SWING CLEAR | | | |
| 7' | | \$1,057.20 | |
| 8' | | \$1,121.30 | |
| 10' | | \$1,406.60 | |
| MODEL CH-957 | U.L.C. | Finish C32D | |
| STAINLESS STEEL FULL SURFACE | | | |
| 7' | | \$903.30 | |
| 8' | | \$1,042.60 | |
| 10' | | \$1,277.40 | |
| SPECIAL FINISHES Add to List Price | | | |
| POLISHED STAINLESS (C32) 950 Series Hnges Only | | \$393.20 | |
| POWDER COATED FINISHES 940 - 950 Series Hinges | | \$123.60 | |
| NOTE: PLATED FINISHES AVAILABLE PRICE ON APPLICATION | | | |
| | | | |

SECTION F

CONTINUOUS HINGES



| ACCESSORIES | | | | |
|--|--------|--------|--------|----------|
| TEK SCREWS (per 100) | | | | \$67.40 |
| ADJUSTA SCREWS (per 100) | | | | \$337.10 |
| COVER CLIPS (per 100) | | | | \$146.10 |
| HINGE SHIMS 79 1/8" LONG | | | | \$112.40 |
| HINGE SHIMS 83 1/8" LONG | | | | \$123.60 |
| HINGE SHIMS 85 1/8" LONG | | | | \$129.20 |
| HINGE SHIMS 95 1/8" LONG | | | | \$134.80 |
| HINGE SHIMS 107 1/8" LONG | | | | \$146.10 |
| HINGE SHIMS 119 1/8" LONG | | | | \$157.30 |
| | | | | |
| REPLACEMENT SNAP ON COVERS | | | | |
| 6'-8" TO 7'-2" | | | | \$49.40 |
| 8' | | | | \$53.90 |
| 10' | | | | \$62.90 |
| | | | | |
| | | | | |
| HINGE MODIFICATIONS: | | | | |
| HOSPITAL TIP HINGES | | | | \$73.00 |
| CUSTOM HOLE PATTERN | | | | \$80.90 |
| DUTCH DOOR HINGE PREP. | | | | \$56.20 |
| SWAGGED HINGES | | | | \$78.60 |
| ELECTRONIC POWER TRANSFER (EPT) PREP (PLEASE ADVISE MODEL) | | | | \$84.30 |
| 8 WIRE POWER TRANSFER HINGE | | | | \$674.10 |
| CUTTING CHARGES (per cut) | | | | \$44.90 |
| | | | | |
| | | | | |
| Note: #12 machine / wood screws are used on all hinges | | | | |
| Opening FT-IN | 6'-8" | 7' | 7'-2" | 8' |
| Hinge Size (INS.) | 79 1/8 | 83 1/8 | 85 1/8 | 95 1/8" |

SECTION H

MORTISE PATCH LOCKS

| FUNCTIONS | | | | | |
|---|-----------------------------------|------|---|-------------------------------------|----------------------------|
| 04 STOREROOM | | | | P.O.A. | |
| <ul style="list-style-type: none">• Guard bolt deadlocks latch bolt.• Latch bolt retracted by lever inside or key outside. | | | | | |
| | | | | | |
| 05 OFFICE | | | | P.O.A. | |
| <ul style="list-style-type: none">• Guard bolt deadlocks latch bolt.• Latch bolt retracted by either lever unless outside lever is locked by toggle in lock front.• Key outside retracts latch bolt when outside lever is locked. | | | | | |
| 15 PASSAGE | | | | P.O.A. | |
| <ul style="list-style-type: none">• Latch bolt retracted by either lever. | | | | | |
| 37 CLASSROOM | | | | P.O.A. | |
| <ul style="list-style-type: none">• Guard bolt deadlocks latch bolt.• Latch bolt retracted by either lever unless outside lever is locked by key outside.• Key outside locks or unlocks outside lever.• Inside lever always operative. | | | | | |
| OTHER FUNCTIONS AVAILABLE BY REQUEST | | | | | |
| | | | | | |
| PAIR OF DOORS | | | STRIKE PATCH MUST BE SPECIFIED SEPARATELY | | |
| WL | STRIKE PATCH WITH LEVERS | | <ul style="list-style-type: none">• Rigid lever both sides of inactive door• Strike for locking door built in. | P.O.A. | |
| | | | | | |
| NL | STRIKE PATCH NO LEVERS | | <ul style="list-style-type: none">• No levers for inactive door.• Strike for locking door built in. | P.O.A. | |
| | | | | | |
| ES | STRIKE PATCH WITH ELECTRIC STRIKE | | <ul style="list-style-type: none">• Strike Patch complete with electric strike. | P.O.A. | |
| | | | | | |
| HOW TO ORDER | | | | HOW TO ORDER | |
| SERIES | | P200 | | SERIES | S100 |
| Function | | 37 | | Function | 5 |
| Strike Patch | | WL | | Strike Patch | NOT APPLICABLE |
| Lever | | J | | Lever | B |
| Hand | | RH | | Hand | RH |
| Finish | | C32D | | Finish | C4 |
| | | | | | |
| EXAMPLE: P237-WL-J-RH-C32D | | | | EXAMPLE: S105-B-RH-C4 | |
| HANDING | | | | FINISHES | |
| LEFT HAND | | LH | | C3 | POLISHED BRASS |
| RIGHT HAND | | RH | | C4 | SATIN BRASS |
| LEFT HAND REVERSE BEVEL | | LHRB | | C10 | SATIN BRONZE |
| RIGHT HAND REVERSE BEVEL | | RHRB | | C10B | OXIDIZED OIL RUBBED BRONZE |
| | | | | C32 | POLISHED STAINLESS STEEL |
| | | | | C32D | SATIN STAINLESS STEEL |
| NOTE: P.O.A. (PRICE ON APPLICATION CONTACT OFFICE) | | | | OTHER FINISHES AVAILABLE ON REQUEST | |

SECTION I

PRISON HARDWARE



| PRODUCT NUMBER | DESCRIPTION | LIST PRICE |
|----------------|---|------------|
| GSH 918 | Prison Hinge with the Shear Resisting Stud | \$108.18 |
| GSH 919 | Prison Hinge without the Shear Resisting Stud | \$96.19 |
| GSH 920 | Prison Door Pull | \$73.30 |
| GSH 921 | Prison Flush Pull | \$73.30 |



Your Partner In Success

676 Petrolia Road, Toronto , ON, Canada M3J 2V2

Tel: 416.667.9593 Fax: 416.667.0806 to ll Free: 1.800.267.1236

Email: info@galleryspecialty.com www.galleryspecialty.com

All Product specifications are subject to change. for the most updated Product features, Contact our Customer service department to ll free at 1(800) 267-1236