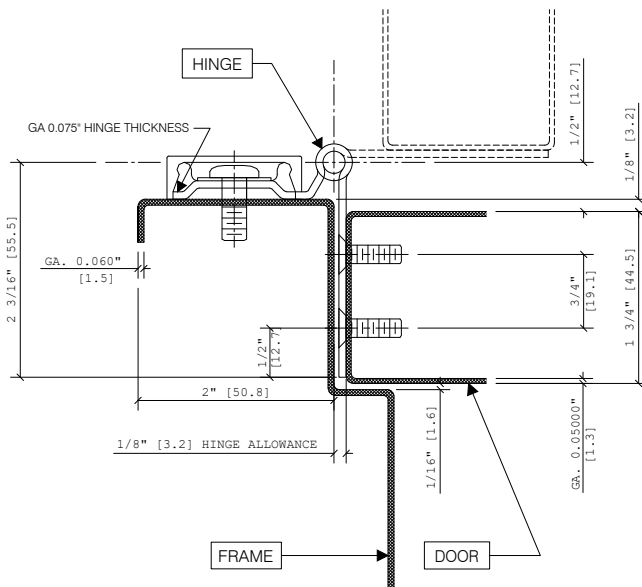


CH954 HALF MORTISE



GallerySpecialty.com
1.800.267.1236



- For Doors Weighing up to 600 pounds
- Non Handed
- 48" Maximum Door Width
- Bevel or Square Edge Door
- Brushed Aluminum leaf cover
- Standard Lengths 6'8" to 7'2", 8' and 10'
- Standard Mounting Hardware
- #10 x 1/2" Self Drilling and Tapping Screws
- #10 x 1" Wood Screws
- Material 954-14 Gauge Type 304 Stainless Steel
- Fire Rating ULC Up to 3 hours
- Finishes 954
- BHMA 630
- US Number US32D

676 Petrolia Road, Toronto, ON, Canada M3J 2V2
Tel: 416.667.9593 Fax: 416.667.0806
Email: info@galleryspecialty.com

All product specifications are subject to change. For the most updated product features, contact our customer service department Toll Free at 1.800.267.1236

©2019 Gallery Specialty Hardware Ltd.